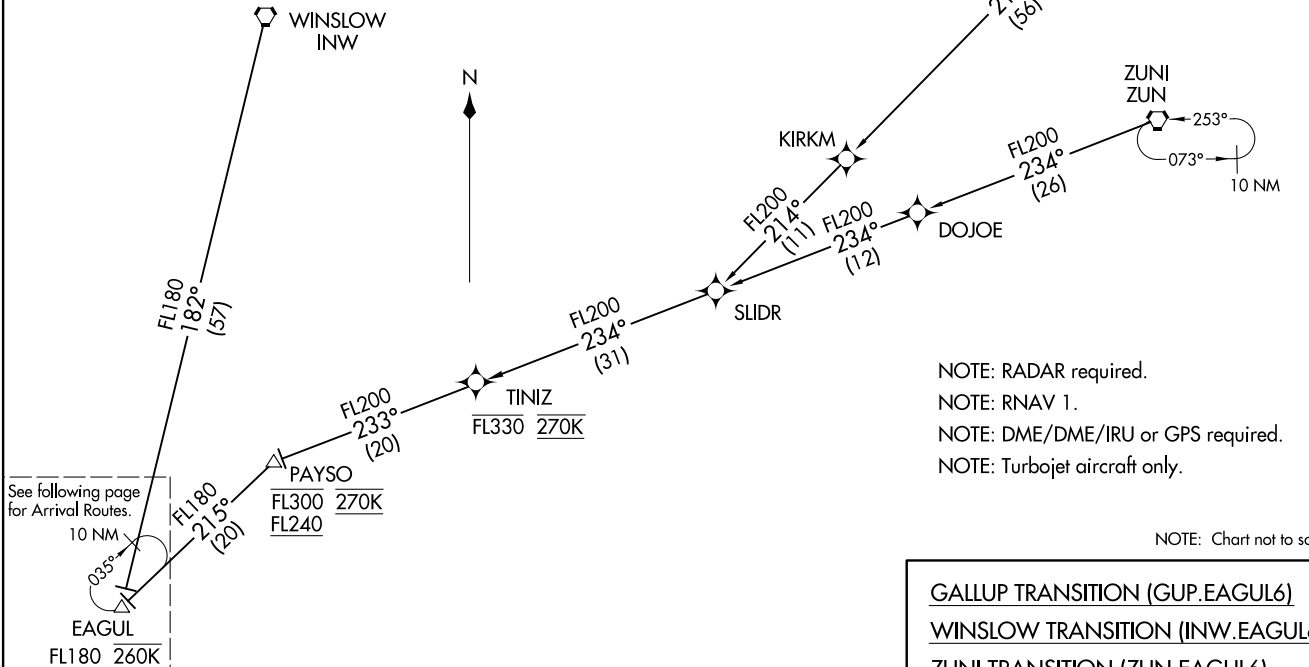


EAGUL SIX ARRIVAL (RNAV) Transition Routes  
(EAGUL.EAGUL6) 18SEP14

PHOENIX APP CON  
128.65 353.9  
PHOENIX TOWER  
118.7 278.8 (Rwy 8-26)  
120.9 254.3 (Rwy 7L-25R, 7R-25L)  
GND CON  
119.75 269.2 (North)  
132.55 269.2 (South)  
D-ATIS  
127.575

NOTE: GALLUP and ZUNI TRANSITIONS: For non-GPS equipped aircraft INW DME must be operational.  
NOTE: LANDING EAST: For non-GPS equipped aircraft PXR and IWA DMEs must be operational.  
NOTE: File GALLUP or ZUNI TRANSITIONS only. WINSLOW TRANSITION assigned by ATC for hazardous weather avoidance only.



See following page for Arrival Routes.

NOTE: RADAR required.  
NOTE: RNAV 1.  
NOTE: DME/DME/IRU or GPS required.  
NOTE: Turbojet aircraft only.

NOTE: Chart not to scale.

GALLUP TRANSITION (GUP.EAGUL6)  
WINSLOW TRANSITION (INW.EAGUL6)  
ZUNI TRANSITION (ZUN.EAGUL6)

(CONTINUED ON FOLLOWING PAGE)

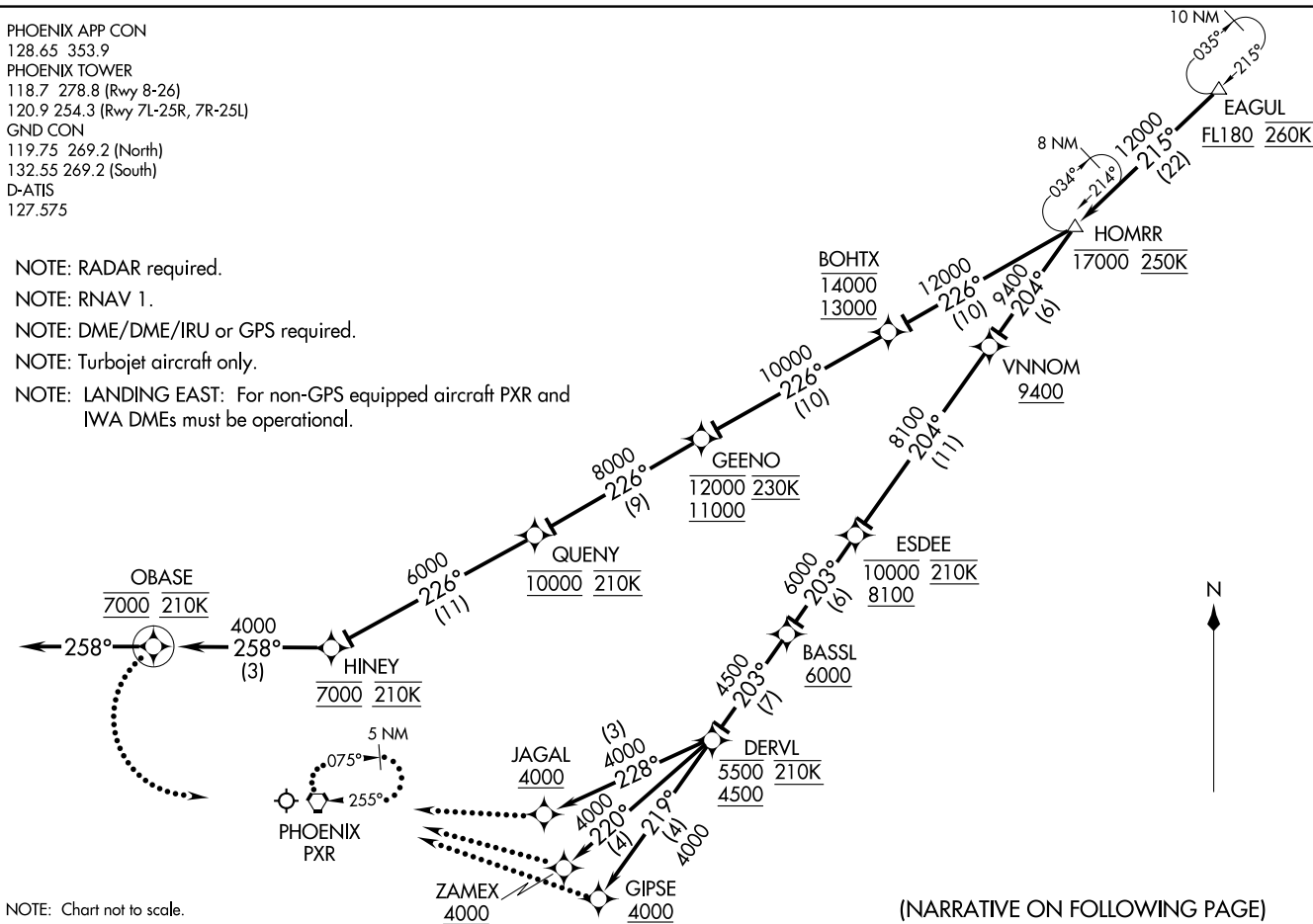
(EAGUL.EAGUL6) 17117  
EAGUL SIX ARRIVAL (RNAV) Transition Routes

AL-322 (FAA)

PHOENIX SKY HARBOR INTL (PHX)  
PHOENIX, ARIZONA

PHOENIX APP CON  
 128.65 353.9  
 PHOENIX TOWER  
 118.7 278.8 (Rwy 8-26)  
 120.9 254.3 (Rwy 7L-25R, 7R-25L)  
 GND CON  
 119.75 269.2 (North)  
 132.55 269.2 (South)  
 D-ATIS  
 127.575

- NOTE: RADAR required.
- NOTE: RNAV 1.
- NOTE: DME/DME/IRU or GPS required.
- NOTE: Turbojet aircraft only.
- NOTE: LANDING EAST: For non-GPS equipped aircraft PXR and IWA DMEs must be operational.



NOTE: Chart not to scale.

(NARRATIVE ON FOLLOWING PAGE)

EAGUL SIX ARRIVAL (RNAV) Arrival Routes  
 (EAGUL-EAGUL6) 18SEP14

PHOENIX SKY HARBOR INTL (PHX)  
 PHOENIX, ARIZONA

(EAGUL-EAGUL6) 17117  
 EAGUL SIX ARRIVAL (RNAV) Arrival Routes  
 AL-322 (FAA)

PHOENIX SKY HARBOR INTL (PHX)  
 PHOENIX, ARIZONA

ARRIVAL ROUTE DESCRIPTION

From EAGUL on track 215° to cross HOMRR at or below 17000 at 250K.

LANDING RUNWAYS 7L, 7R, 8: From HOMRR on track 226° to cross BOHTX at/above 13000 and at/below 14000, then on track 226° to cross GEENO at/above 11000 and at/below 12000 and at 230K, then on track 226° to cross QUENY at 10000 and at 210K, then on track 226° to cross HINEY at 7000 and at 210K, then on track 258° to cross OBASE at 7000 and at 210K, then on track 258°. Expect RADAR vectors to final approach course.

LANDING RUNWAY 25L: From HOMRR on track 204° to cross VNNOM at/above 9400, then on track 204° to cross ESDEE at/above 8100 and at/below 10000 and at 210K, then on track 203° to cross BASSL at/above 6000, then on track 203° to cross DERVL at/above 4500 and at/below 5500 and at 210K, then on track 219° to cross GIPSE at/above 4000. Expect ILS or LOC RWY 25L approach or RADAR vectors to final approach course.

LANDING RUNWAY 25R: From HOMRR on track 204° to cross VNNOM at/above 9400, then on track 204° to cross ESDEE at/above 8100 and at/below 10000 and at 210K, then on track 203° to cross BASSL at/above 6000, then on track 203° to cross DERVL at/above 4500 and at/below 5500 and at 210K, then on track 220° to cross ZAMEX at/above 4000. Expect RNAV (GPS) Y RWY 25R approach or RADAR vectors to final approach course.

LANDING RUNWAY 26: From HOMRR on track 204° to cross VNNOM at/above 9400, then on track 204° to cross ESDEE at/above 8100 and at/below 10000 and at 210K, then on track 203° to cross BASSL at/above 6000, then on track 203° to cross DERVL at/above 4500 and at/below 5500 at 210K, then on track 228° to cross JAGAL at/above 4000. Expect ILS or LOC RWY 26 approach or RADAR vectors to final approach course.

LOST COMMUNICATIONS

LANDING RUNWAY 7L: After OBASE turn left, intercept and execute RWY 7L ILS approach. If unable, proceed direct PXR VORTAC and hold, maintain 9000.

LANDING RUNWAY 7R: After OBASE turn left, intercept and execute RWY 7R ILS approach. If unable, proceed direct PXR VORTAC and hold, maintain 9000.

LANDING RUNWAY 8: After OBASE turn left, intercept and execute RWY 8 ILS approach. If unable, proceed direct PXR VORTAC and hold, maintain 9000.

LANDING RUNWAY 25L: At GIPSE, intercept and execute RWY 25L ILS approach. If unable, proceed direct PXR VORTAC and hold, maintain 9000.

LANDING RUNWAY 25R: At ZAMEX, intercept and execute RWY 25R RNAV (GPS) approach. If unable, proceed direct PXR VORTAC and hold, maintain 9000.

LANDING RUNWAY 26: At JAGAL, intercept and execute RWY 26 ILS approach. If unable, proceed direct PXR VORTAC and hold, maintain 9000.

SW-4, 16 APR 2026 to 14 MAY 2026

SW-4, 16 APR 2026 to 14 MAY 2026