

PHOENIX APP CON
124.1 256.9
PHOENIX TOWER
118.7 278.8 (Rwy 8-26)
120.9 254.3 (Rwy 7R-25L, 7L-25R)
GND CON
119.75 269.2 (North)
132.55 269.2 (South)
D-ATIS
127.575

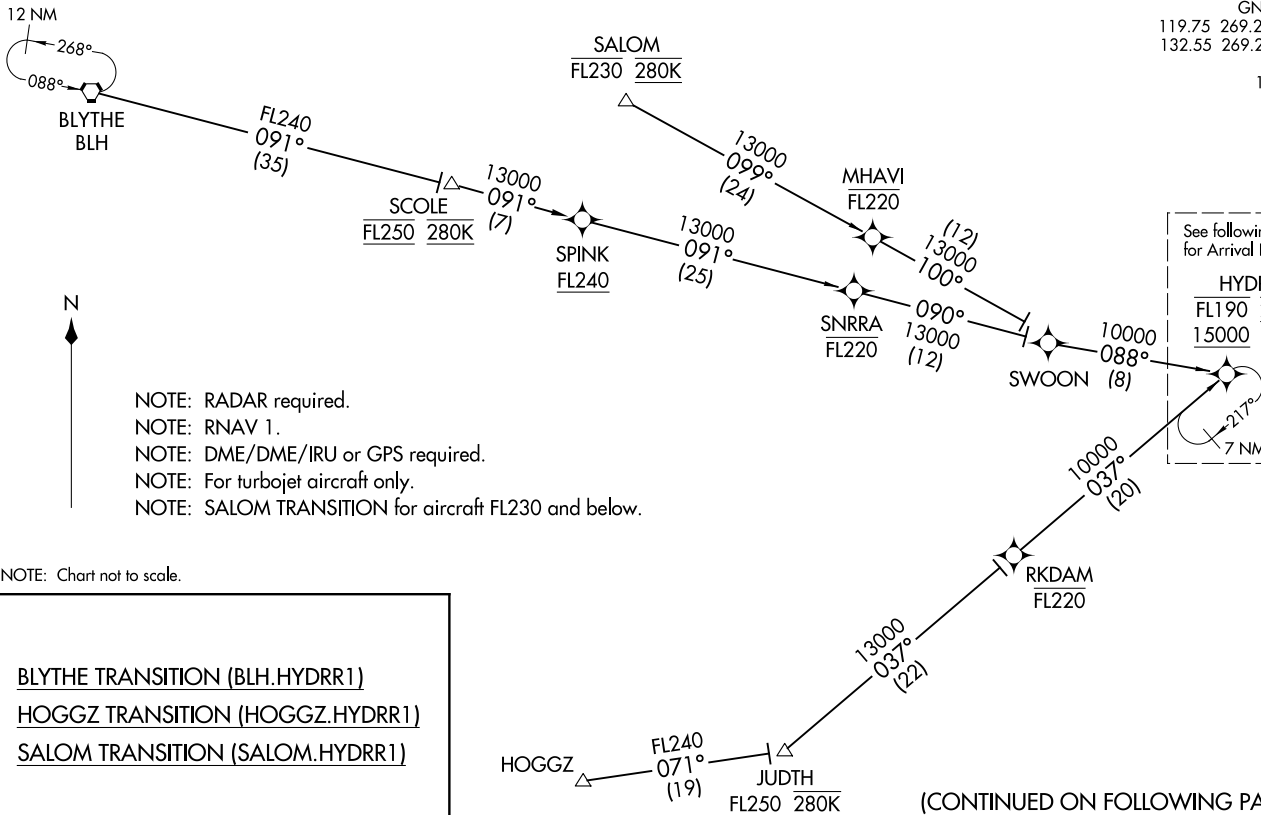
(HYDRR.HYDRR1) 17117

AL-322 (FAA)
Transition Routes

PHOENIX SKY HARBOR INTL (PHX)
PHOENIX, ARIZONA

PHOENIX APP CON
124.1 256.9
PHOENIX TOWER
118.7 278.8 (Rwy 8-26)
120.9 254.3 (Rwy 7R-25L, 7L-25R)
GND CON
119.75 269.2 (North)
132.55 269.2 (South)
D-ATIS
127.575

See following page
for Arrival Routes.
HYDRR
FL190 265K
15000



NOTE: RADAR required.
NOTE: RNAV 1.
NOTE: DME/DME/IRU or GPS required.
NOTE: For turbojet aircraft only.
NOTE: SALOM TRANSITION for aircraft FL230 and below.

NOTE: Chart not to scale.

BLYTHE TRANSITION (BLH.HYDRR1)
HOGGZ TRANSITION (HOGGZ.HYDRR1)
SALOM TRANSITION (SALOM.HYDRR1)

(CONTINUED ON FOLLOWING PAGE)

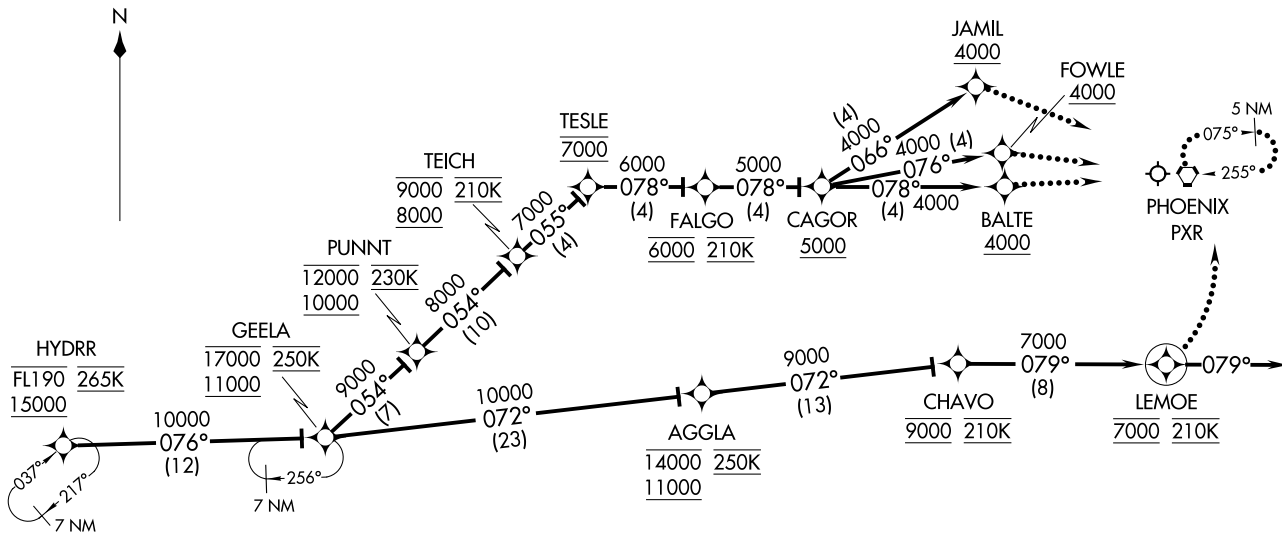
HYDRR ONE ARRIVAL (RNAV)
(HYDRR.HYDRR1) 18SEP14

Transition Routes

PHOENIX, ARIZONA
PHOENIX SKY HARBOR INTL (PHX)

NOTE: RADAR required.
 NOTE: RNAV 1.
 NOTE: DME/DME/IRU or GPS required.
 NOTE: For turbojet aircraft only.

PHOENIX APP CON 124.1 256.9
 PHOENIX TOWER 118.7 278.8 (Rwy 8-26)
 120.9 254.3 (Rwy 7R-25L, 7L-25R)
 GND CON 119.75 269.2 (North)
 132.55 269.2 (South)
 D-ATIS
 127.575



(NARRATIVE ON FOLLOWING PAGE)

NOTE: Chart not to scale.

HYDRR ONE ARRIVAL (RNAV) Arrival Routes
 (HYDRR, HYDRR1) 18SEP14

PHOENIX, ARIZONA
 PHOENIX SKY HARBOR INTL (PHX)

(HYDRR, HYDRR1) 17117
 HYDRR ONE ARRIVAL (RNAV) Arrival Routes
 AL-322 (FAA)

PHOENIX, ARIZONA
 PHOENIX SKY HARBOR INTL (PHX)

ARRIVAL ROUTE DESCRIPTION

From HYDRR on track 076° track to cross GEELA at/above 11000 and at/below 17000 at 250K.

LANDING RUNWAY 7L: From GEELA on track 054° to cross PUNNT at/above 10000 and at/below 12000 and at 230K, then on track 054° to cross TEICH at/above 8000 and at/below 9000 and at 210K, then on track 055° to cross TESLE at 7000, then on track 078° to cross FALGO at 6000 and at 210K, then on track 078° to cross CAGOR at/above 5000, then on track 076° to cross FOWLE at/above 4000. Expect ILS RWY 7L approach or RADAR vectors to final approach course.

LANDING RUNWAY 7R: From GEELA on track 054° to cross PUNNT at/above 10000 and at/below 12000 and at 230K, then on track 054° to cross TEICH at/above 8000 and at/below 9000 and at 210K, then on track 055° to cross TESLE at 7000, then on track 078° to cross FALGO at 6000 and at 210K, then on track 078° to cross CAGOR at/above 5000, then on track 078° to cross BALTE at/above 4000. Expect ILS RWY 7R approach or RADAR vectors to final approach course.

LANDING RUNWAY 8: From GEELA on track 054° to cross PUNNT at/above 10000 and at/below 12000 and at 230K, then on track 054° to cross TEICH at/above 8000 and at/below 9000 and at 210K, then on track 055° to cross TESLE at 7000, then on track 078° to cross FALGO at 6000 and at 210K, then on track 078° to cross CAGOR at/above 5000, then on track 066° to cross JAMIL at/above 4000. Expect ILS RWY 8 approach or RADAR vectors to final approach course.

LANDING RUNWAYS 25L, 25R, 26: From GEELA on track 072° to cross AGGLA at/above 11000 and at/below 14000 and at 250K, then on track 072° to cross CHAVO at 9000 and at 210K, then on track 079° to cross LEMOE at 7000 at 210K, then on track 079°. Expect RADAR vectors to final approach course.

LOST COMMUNICATIONS

LANDING RUNWAY 7L: At FOWLE intercept and execute RWY 7L ILS approach. If unable, proceed direct PXR VORTAC and hold, maintain 9000.

LANDING RUNWAY 7R: At BALTE intercept and execute RWY 7R ILS approach. If unable, proceed direct PXR VORTAC and hold, maintain 9000.

LANDING RUNWAY 8: At JAMIL intercept and execute RWY 8 ILS approach. If unable, proceed direct PXR VORTAC and hold, maintain 9000.

LANDING RUNWAY 25L: At LEMOE turn left, intercept and execute RWY 25L ILS approach. If unable, proceed direct PXR VORTAC and hold, maintain 9000.

LANDING RUNWAY 25R: At LEMOE turn left, intercept and execute RWY 25R RNAV (GPS) approach. If unable, proceed direct PXR VORTAC and hold, maintain 9000.

LANDING RUNWAY 26: At LEMOE, turn left, intercept and execute RWY 26 ILS approach. If unable, proceed direct PXR VORTAC and hold, maintain 9000.