

LOC/DME I-RJG 110.75 Chan 44(Y)	APP CRS 258°	Rwy Ldg TDZE 7800 1126	Apt Elev 1135
--	------------------------	--	-------------------------

ILS or LOC RWY 25L

PHOENIX SKY HARBOR INTL (PHX)

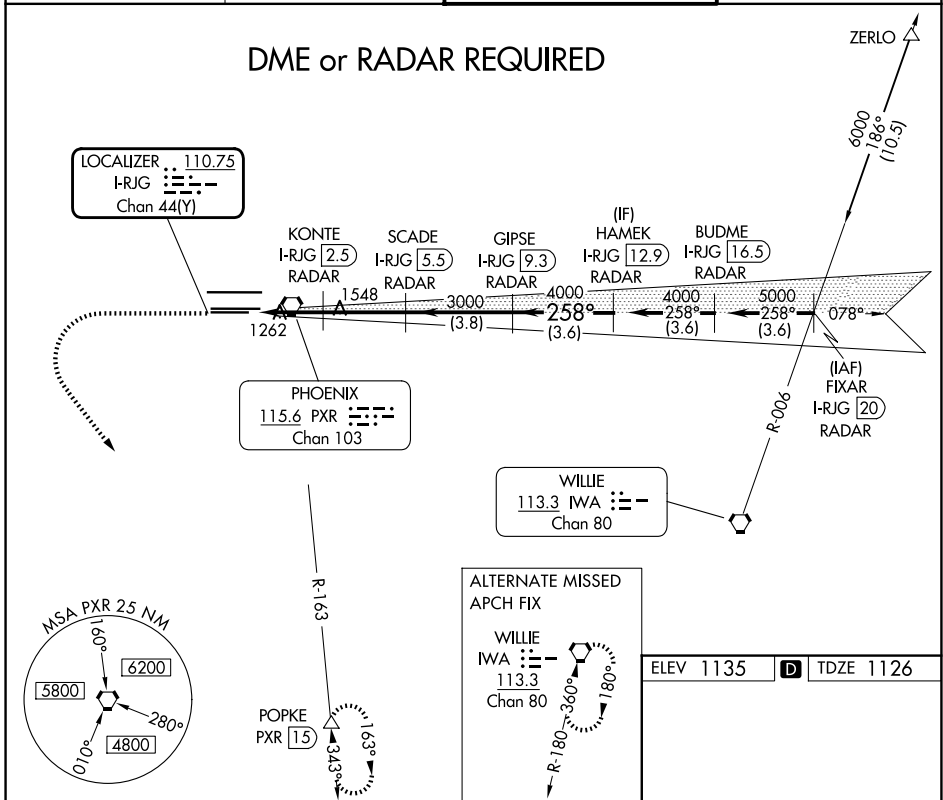
Autopilot coupled approach NA below 1925.
Simultaneous approach authorized with Rwy 26.

MALS

MISSED APPROACH: Climb to 3000 then climbing left turn to 5000 on heading 130° and PXR R-163 to POPKE/15 DME and hold.

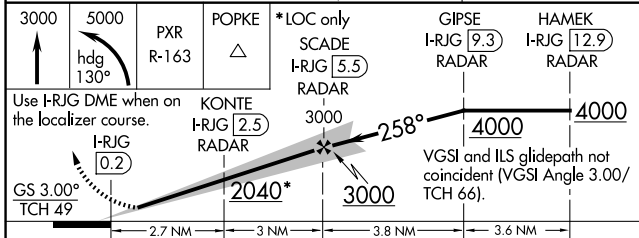
D-ATIS 127.575	PHOENIX APP CON 128.65 353.9	PHOENIX TOWER 118.7 278.8 (8-26) 120.9 254.3 (7L-25R, 7R-25L)	GND CON 119.75 269.2 (N) 132.55 269.2 (S)
--------------------------	--	---	---

DME or RADAR REQUIRED



SW-4, 16 APR 2026 to 14 MAY 2026

SW-4, 16 APR 2026 to 14 MAY 2026



3000	5000	PXR R-163	POPKE	*LOC only	GIPSE	HAMEK
↑	hdg 130°		△	SCAD	I-RJG 9.3	I-RJG 12.9
				I-RJG 5.5	RADAR	RADAR
Use I-RJG DME when on the localizer course.			KONTE	3000	4000	4000
			I-RJG 2.5	258°	258°	258°
			RADAR	2040*	3000	4000
GS 3.00° TCH 49				2.7 NM	3 NM	3.8 NM
						3.6 NM
CATEGORY	A	B	C	D		
S-ILS 25L	1326-1/2		200 (200-1/2)			
S-LOC 25L	1520-1/2		394 (400-1/2)		1520-3/4	394 (400-3/4)
CIRCLING	1740-1	605 (700-1)	2040-2 3/4	905 (1000-2 3/4)	2560-3	1425 (1500-3)

ELEV 1135	D	TDZE 1126
-----------	----------	-----------

