


LOC/DME I-AHA 110.75 Chan 44 (Y)	APP CRS 078°	Rwy Ldg 7800 TDZE 1116 Apt Elev 1135
--	------------------------	---

ILS or LOC RWY 7R

PHOENIX SKY HARBOR INTL (PHX)

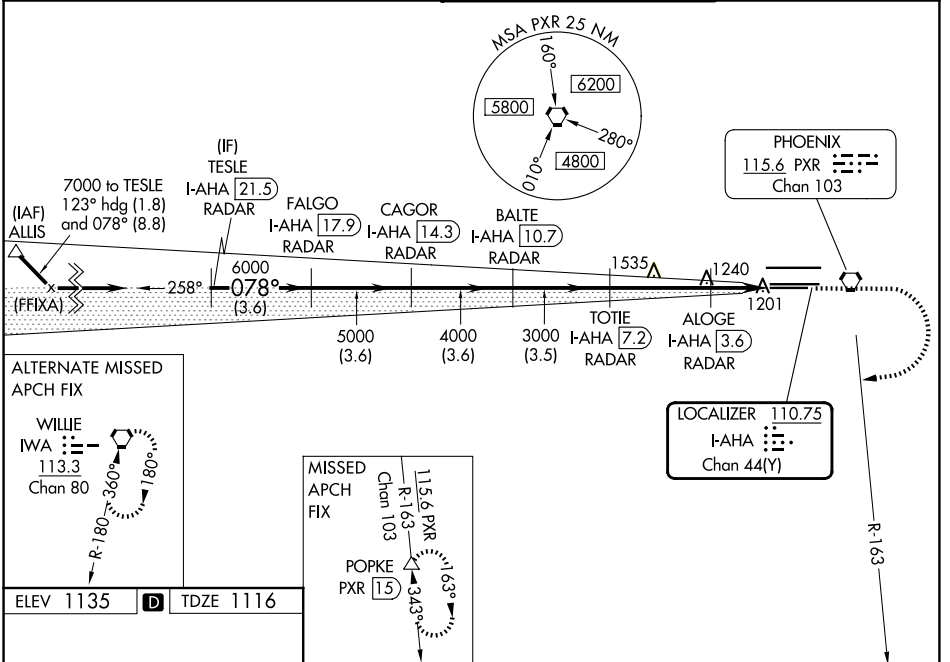
DME required.

⚠ Inop table does not apply to S-ILS 7R. Simultaneous approach authorized with ILS or LOC Rwy 8 and RNAV (GPS) Y Rwy 8. Rwy 7R helicopter visibility reduction below $\frac{3}{4}$ SM NA. LOC procedure NA during simultaneous operations. For inop ALS, increase S-LOC 7R visibility Cats A/B to 1 SM and Cats C/D to $1\frac{1}{2}$ SM.

MALSR 

MISSED APPROACH: Climb to 3300 then climbing right turn to 5000 on heading 250° and PXR VORTAC R-163 to POPKE/PXR 15 DME and hold.

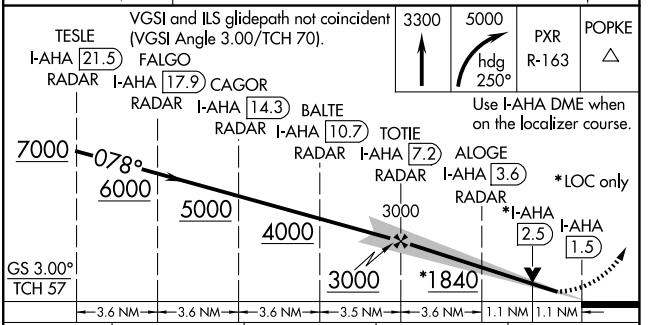
D-ATIS 127.575	PHOENIX APP CON 128.65 353.9	PHOENIX TOWER 118.7 278.8 (8-26) 120.9 254.3 (7L-25R, 7R-25L)	GND CON 119.75 269.2 (N) 132.55 269.2 (S)
--------------------------	--	---	---



SW-4, 16 APR 2026 to 14 MAY 2026

SW-4, 16 APR 2026 to 14 MAY 2026

ELEV 1135	D	TDZE 1116
-----------	----------	-----------



HIRL Rws 8-26, 7L-25R and 7R-25L
REIL Rwy 26

FAF to MAP 5.8 NM

Knots	60	90	120	150	180
Min:Sec	5:48	3:52	2:54	2:19	1:56

CATEGORY	A	B	C	D
S-ILS 7R		1369- $\frac{3}{4}$	253 (300- $\frac{3}{4}$)	
S-LOC 7R		1520- $\frac{3}{4}$	404 (400- $\frac{3}{4}$)	
CIRCLING	1740-1	605 (700-1)	2040-2 $\frac{3}{4}$ 905 (1000-2 $\frac{3}{4}$)	2560-3 1425 (1500-3)