

# QUAKY ONE DEPARTURE (RNAV)

AL-322 (FAA)

PHOENIX SKY HARBOR INTL (PHX)  
PHOENIX, ARIZONA

D-ATIS  
127.575  
CLNC DEL  
118.1 269.2  
CPDLC  
GND CON  
119.75 269.2 (NORTH)  
132.55 269.2 (SOUTH)  
PHOENIX TOWER  
118.7 278.8 (Rwy 8-26)  
120.9 254.3 (Rwys 7L-25R, 7R-25L)  
PHOENIX DEP CON  
119.2 281.45

GRAND CANYON   
GCN

**TOP ALTITUDE:  
8000**

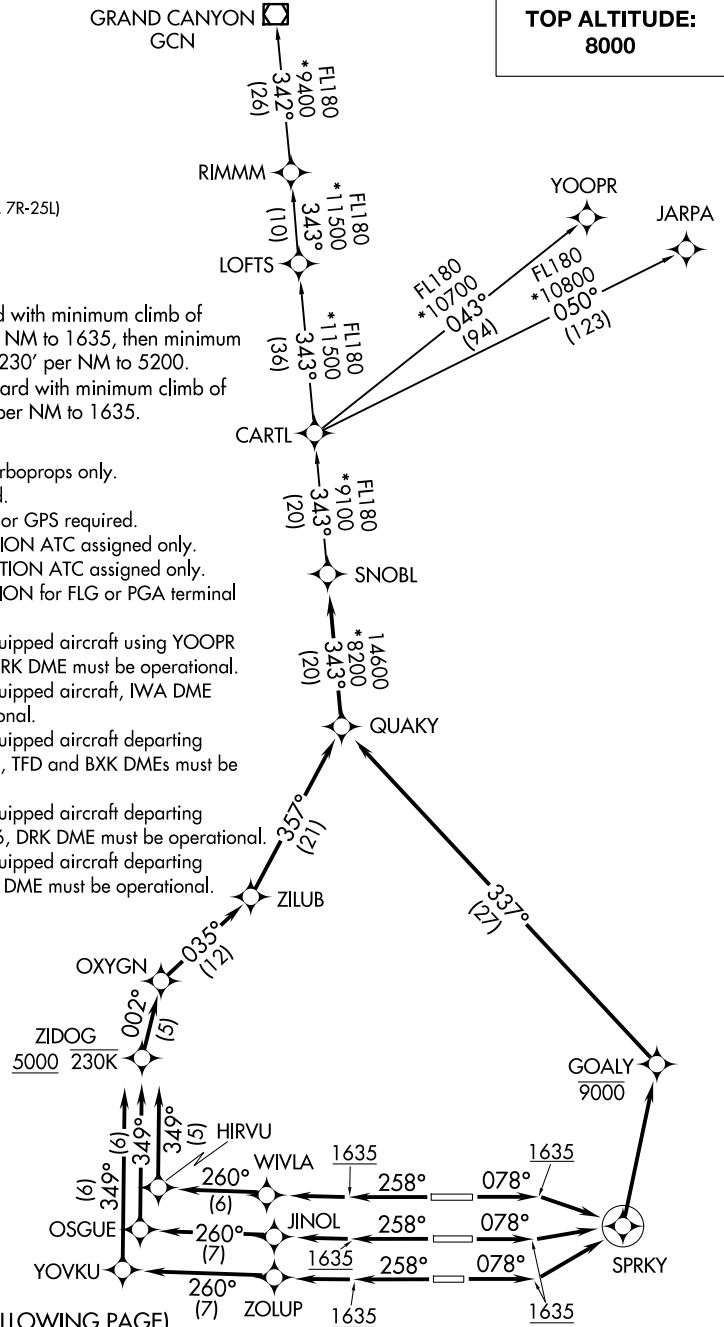
### TAKEOFF MINIMUMS

Rwys 7L/R, 8: Standard with minimum climb of 500' per NM to 1635, then minimum climb of 230' per NM to 5200.  
Rwys 25L/R, 26: Standard with minimum climb of 500' per NM to 1635.

- NOTE: RNAV 1.
- NOTE: Turbojets and turboprops only.
- NOTE: RADAR required.
- NOTE: DME/DME/IRU or GPS required.
- NOTE: JARPA TRANSITION ATC assigned only.
- NOTE: YOOPR TRANSITION ATC assigned only.
- NOTE: CARTL TRANSITION for FLG or PGA terminal arrivals only.
- NOTE: For non-GPS equipped aircraft using YOOPR TRANSITION, DRK DME must be operational.
- NOTE: For non-GPS equipped aircraft, IWA DME must be operational.
- NOTE: For non-GPS equipped aircraft departing Rwys 25L/R, 26, TFD and BXK DMEs must be operational.
- NOTE: For non-GPS equipped aircraft departing Rwys 8, 25R, 26, DRK DME must be operational.
- NOTE: For non-GPS equipped aircraft departing Rwys 7L/R, PXR DME must be operational.

SW-4, 16 APR 2026 to 14 MAY 2026

SW-4, 16 APR 2026 to 14 MAY 2026



NOTE: Chart not to scale.

(NARRATIVE ON FOLLOWING PAGE)

# QUAKY ONE DEPARTURE (RNAV)

PHOENIX, ARIZONA  
PHOENIX SKY HARBOR INTL (PHX)



DEPARTURE ROUTE DESCRIPTION

TAKEOFF RUNWAYS 7L/R, 8: Climb heading 078° to 1635, then direct SPRKY, then left turn direct to cross GOALY at/below 9000, then on track 337° to QUAKY, thence . . . .

TAKEOFF RUNWAY 25L: Climb heading 258° to 1635, then direct ZOLUP, then on track 260° to YOVKU, then on track 349° to cross ZIDOG at or above 5000 and at or below 230K, then on track 002° to OXYGN, then on track 035° to ZILUB, then on track 357° to QUAKY, thence . . . .

TAKEOFF RUNWAY 25R: Climb heading 258° to 1635, then direct JINOL, then on track 260° to OSGUE, then on track 349° to cross ZIDOG at or above 5000 and at or below 230K, then on track 002° to OXYGN, then on track 035° to ZILUB, then on track 357° to QUAKY, thence . . . .

TAKEOFF RUNWAY 26: Climb heading 258° to 1635, then direct WIVLA, then on track 260° to HIRVU, then on track 349° to cross ZIDOG at or above 5000 and at or below 230K, then on track 002° to OXYGN, then on track 035° to ZILUB, then on track 357° to QUAKY, thence . . . .

. . . . on track 343° to SNOBL, then on (transition). Maintain 8000, expect higher altitude 3 minutes after departure.

CARTL TRANSITION (QUAKY1.CARTL)

GRAND CANYON TRANSITION (QUAKY1.GCN)

JARPA TRANSITION (QUAKY1.JARPA)

RIMMM TRANSITION (QUAKY1.RIMMM)

YOOPR TRANSITION (QUAKY1.YOOPR)

SW-4, 16 APR 2026 to 14 MAY 2026

SW-4, 16 APR 2026 to 14 MAY 2026