

WAAS CH 40022 W25A	APP CRS 258°	Rwy Ldg 10300 TDZE 1134 Apt Elev 1135
--	------------------------	--

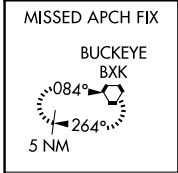
RNAV (GPS) Y RWY 25R

PHOENIX SKY HARBOR INTL (PHX)

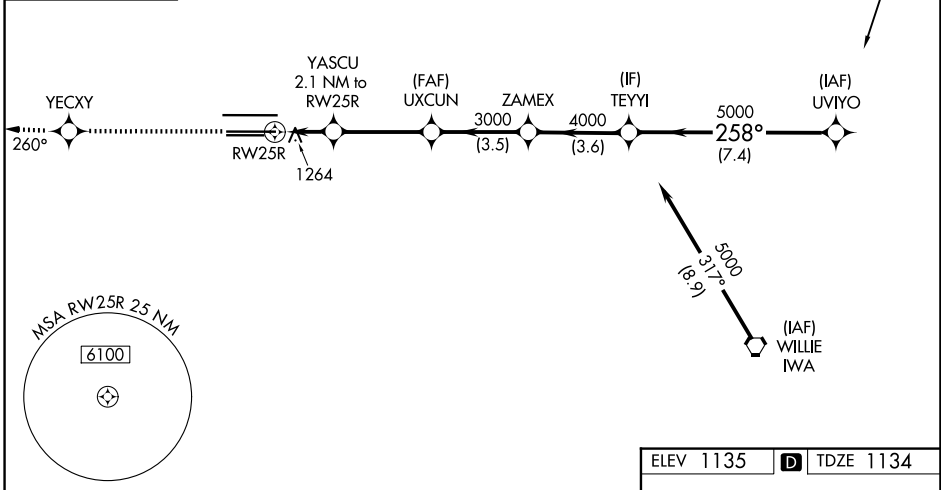
⚠ For uncompensated Baro-VNAV systems, LNAV/VNAV NA below -17°C (2°F) or above 46°C (114°F). DME/DME RNP-0.3 NA. Simultaneous approach authorized with ILS or LOC Rwy 26. Use of FD or AP providing RNAV track guidance required during simultaneous operations. LNAV procedure NA during simultaneous operations.

MISSED APPROACH: Climb to 5000 direct YECCY and via 260° track to BKK VORTAC and hold.

D-ATIS 127.575	PHOENIX APP CON 128.65 353.9	PHOENIX TOWER 118.7 278.8 (8-26) 120.9 254.3 (7L-25R, 7R-25L)	GND CON 119.75 269.2 (N) 132.55 269.2 (S)
--------------------------	--	---	---

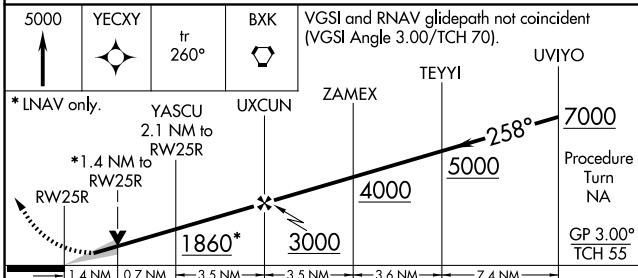


Procedure NA for arrivals at ZERLO via V190 northeast bound.



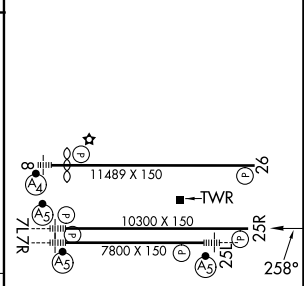
SW-4, 16 APR 2026 to 14 MAY 2026

SW-4, 16 APR 2026 to 14 MAY 2026



ELEV 1135	D TDZE 1134
-----------	--------------------

5000	YECCY	tr 260°	BKK	VGSI and RNAV glidepath not coincident (VGSI Angle 3.00/TCH 70).
*LNAV only.				
	YASCU 2.1 NM to RW25R	UXCUN	ZAMEX	TEYI
	*1.4 NM to RW25R			UVIYO
	1860*	3000	4000	5000
	1.4 NM	0.7 NM	3.5 NM	3.5 NM
			3.6 NM	7.4 NM
CATEGORY	A	B	C	D
LPV DA		1439-1	305 (400-1)	
LNAV/VNAV DA		1580-1½	446 (500-1½)	
LNAV MDA	1640-1	506 (600-1)	1640-1½	506 (600-1½)
CIRCLING	1740-1	605 (700-1)	2040-2¾ 905 (1000-2¾)	2560-3 1425 (1500-3)



HIRL Rwy 8-26, 7L-25R and 7R-25L	REIL Rwy 26
----------------------------------	-------------