

| | | |
|--|------------------------|--|
| WAAS CH 70321 W26A | APP CRS 258° | Rwy Ldg 11489 TDZE 1135 Apt Elev 1135 |
|--|------------------------|--|

RNAV (GPS) Y RWY 26

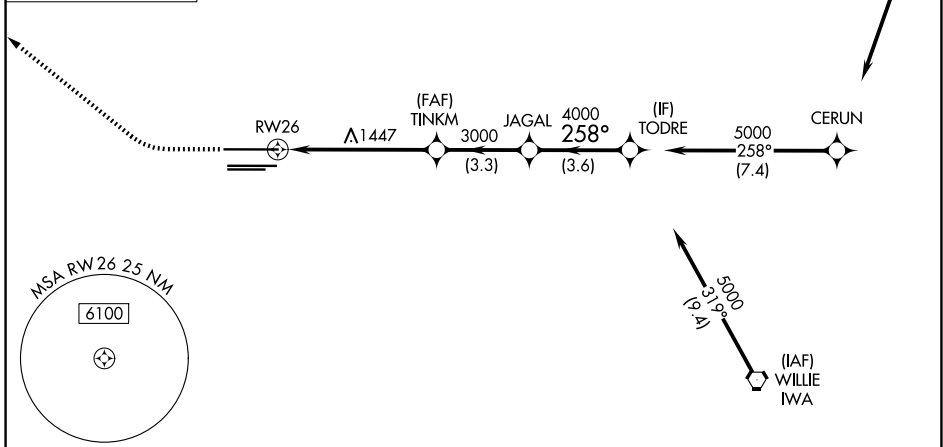
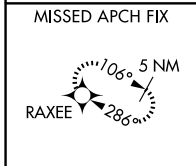
PHOENIX SKY HARBOR INTL (PHX)

RNP APCH-GPS.

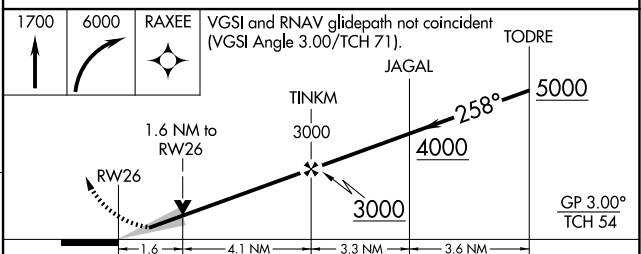
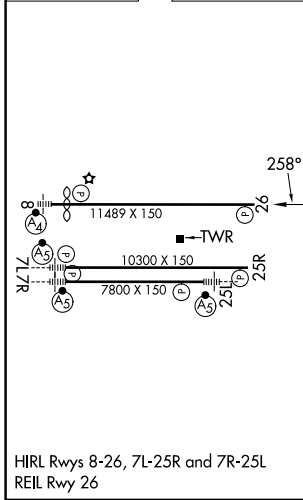
⚠ Simultaneous approach authorized. LNAV procedure NA during simultaneous operations. Use of FD or AP required during simultaneous operations. For uncompensated Baro-VNAV systems, procedure NA below 2°C or above 54°C.

MISSED APPROACH: Climb to 1700 then climbing right turn to 6000 direct RAXEE and hold.

| | | | |
|--------------------------|--|---|---|
| D-ATIS 127.575 | PHOENIX APP CON 128.65 353.9 | PHOENIX TOWER 118.7 278.8 (8-26) 120.9 254.3 (7L-25R, 7R-25L) | GND CON 119.75 269.2 (N) 132.55 269.2 (S) |
|--------------------------|--|---|---|



| | | |
|-----------|----------|-----------|
| ELEV 1135 | D | TDZE 1135 |
|-----------|----------|-----------|



| CATEGORY | A | B | C | D |
|--------------|--------|-------------|--------------------------------|-------------------------|
| LPV DA | | 1390-3/4 | 255 (300-3/4) | |
| LNAV/VNAV DA | | 1581-1 3/8 | 446 (500-1 3/8) | |
| LNAV MDA | 1700-1 | 565 (600-1) | 1700-1 5/8 | 565 (600-1 5/8) |
| CIRCLING | 1740-1 | 605 (700-1) | 2040-2 3/4 905 (1000-2 3/4) | 2340-3 1205 (1300-3) |

SW-4, 16 APR 2026 to 14 MAY 2026

SW-4, 16 APR 2026 to 14 MAY 2026