

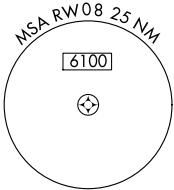
| | | |
|--|------------------------|--|
| WAAS CH 86611 W08A | APP CRS 078° | Rwy Ldg 10591 TDZE 1118 Apt Elev 1135 |
|--|------------------------|--|

RNAV (GPS) Y RWY 8

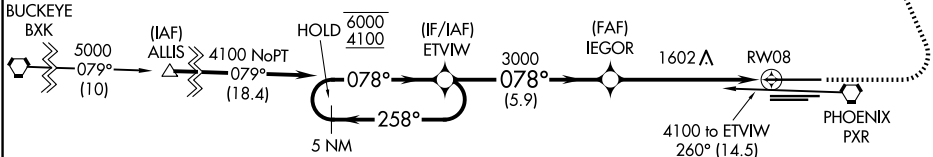
PHOENIX SKY HARBOR INTL (PHX)

| | | |
|---|-------|---|
| RNP APCH - GPS. | MALSF | MISSED APPROACH: Climb to 3000 then climbing left turn to 5000 direct AVENT and hold. |
| <p>⚠ Simultaneous approach authorized. LNAV procedure NA during simultaneous operations. Inop table does not apply to LPV all Cats. For inop ALS, increase LNAV Cats C and D visibility to 2 SM.</p> | | |

| | | | |
|--------------------------|--|---|---|
| D-ATIS 127.575 | PHOENIX APP CON 128.65 353.9 | PHOENIX TOWER 118.7 278.8 (8-26) 120.9 254.3 (7L-25R, 7R-25L) | GND CON 119.75 269.2 (N) 132.55 269.2 (S) |
|--------------------------|--|---|---|

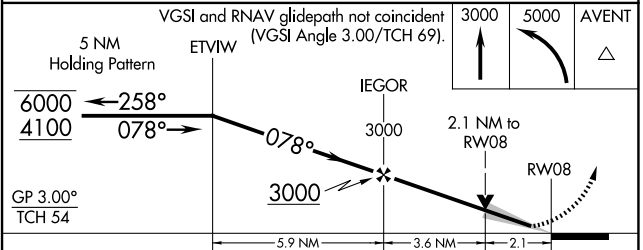
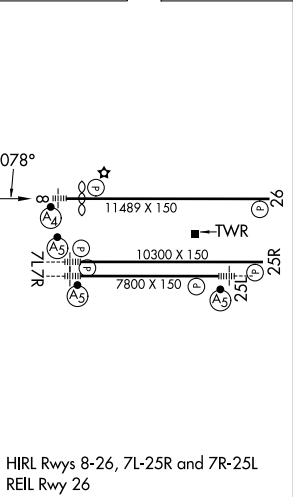


Procedure NA for arrival on BXX VORTAC airway radials 077 CW 152.



Procedure NA for arrival on PXR VORTAC airway radials 185 CW 336.

| | | |
|-----------|----------|-----------|
| ELEV 1135 | D | TDZE 1118 |
|-----------|----------|-----------|



| | | | | |
|----------|---------------------------|-------------------------------|--------------------------------|-------------------------|
| CATEGORY | A | B | C | D |
| LPV DA | 1368-3/4 250 (300-3/4) | | | |
| LNAV MDA | 1860-3/4 742 (800-3/4) | 1860-1 742 (800-1) | 1860-1 7/8 742 (800-1 7/8) | |
| CIRCLING | 1860-1 725 (800-1) | 1860-1 1/4 725 (800-1 1/4) | 2040-2 3/4 905 (1000-2 3/4) | 2340-3 1205 (1300-3) |

SW-4, 16 APR 2026 to 14 MAY 2026

SW-4, 16 APR 2026 to 14 MAY 2026