

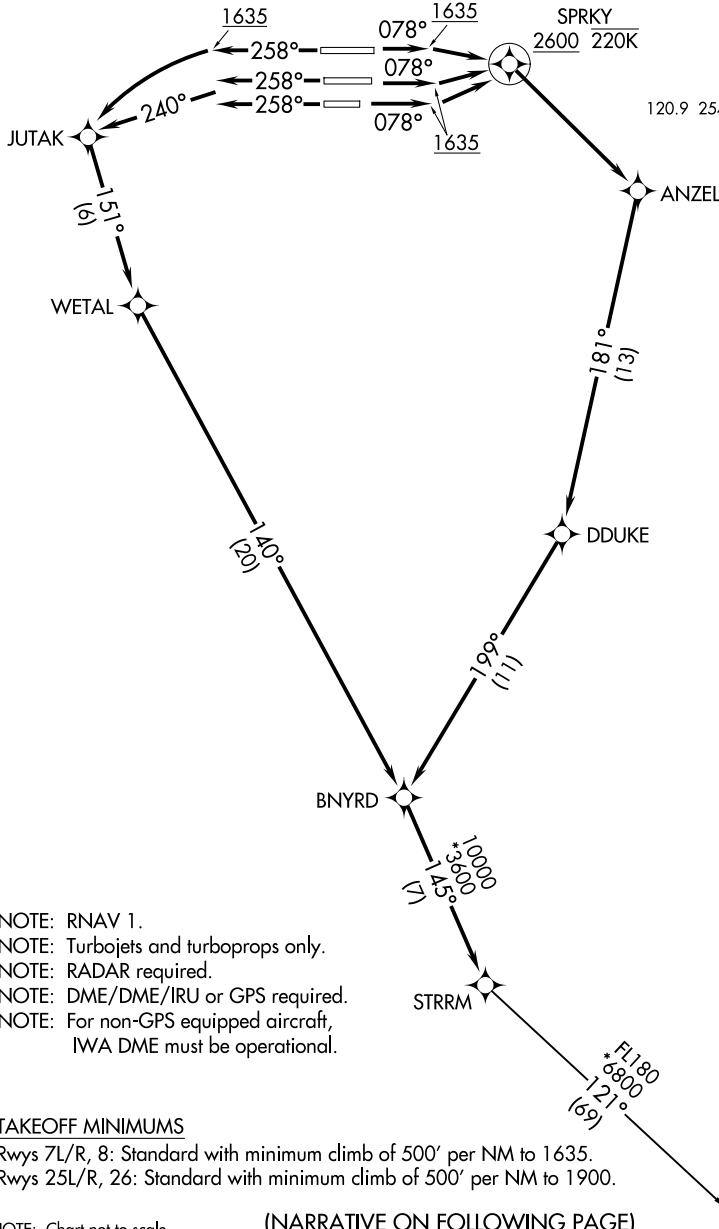
(STRM1.STRRM) 18144

STRM ONE DEPARTURE (RNAV)

AL-322 (FAA)

PHOENIX SKY HARBOR INTL (PHX)
PHOENIX, ARIZONA

**TOP ALTITUDE:
8000**



- NOTE: RNAV 1.
- NOTE: Turbojets and turboprops only.
- NOTE: RADAR required.
- NOTE: DME/DME/IRU or GPS required.
- NOTE: For non-GPS equipped aircraft, IWA DME must be operational.

TAKEOFF MINIMUMS

Rwys 7L/R, 8: Standard with minimum climb of 500' per NM to 1635.
 Rwys 25L/R, 26: Standard with minimum climb of 500' per NM to 1900.

NOTE: Chart not to scale.

(NARRATIVE ON FOLLOWING PAGE)

D-ATIS 127.575
 CLNC DEL 118.1 269.2
 CPDLC
 GND CON 119.75 269.2 (NORTH)
 132.55 269.2 (SOUTH)
 PHOENIX TOWER 118.7 278.8 (Rwys 8-26)
 120.9 254.3 (Rwys 7L-25R, 7R-25L)
 PHOENIX DEP CON 126.8 269.6

SW-4, 16 APR 2026 to 14 MAY 2026

SW-4, 16 APR 2026 to 14 MAY 2026

STRM ONE DEPARTURE (RNAV)

(STRM1.STRRM) 24MAY18

PHOENIX, ARIZONA
PHOENIX SKY HARBOR INTL (PHX)



DEPARTURE ROUTE DESCRIPTION

TAKEOFF RUNWAYS 7L/R, 8: Climb heading 078° to 1635, then direct to cross SPRKY at or above 2600 and at or below 220K, then right turn direct ANZEL, then on track 181° to DDUKE, then on track 199° to BNYRD, thence

TAKEOFF RUNWAYS 25L/R: Climb heading 258° to intercept course 240° to JUTAK, then on track 151° to WETAL, then on track 140° to BNYRD, thence

TAKEOFF RUNWAY 26: Climb heading 258° to 1635, then left turn direct JUTAK, then on track 151° to WETAL, then on track 140° to BNYRD, thence

. . . . on track 145° to STRRM, then on (transition). Maintain 8000, expect higher altitude 3 minutes after departure.

TUCSON TRANSITION (STRRM1.TUS)

SW-4, 16 APR 2026 to 14 MAY 2026

SW-4, 16 APR 2026 to 14 MAY 2026