

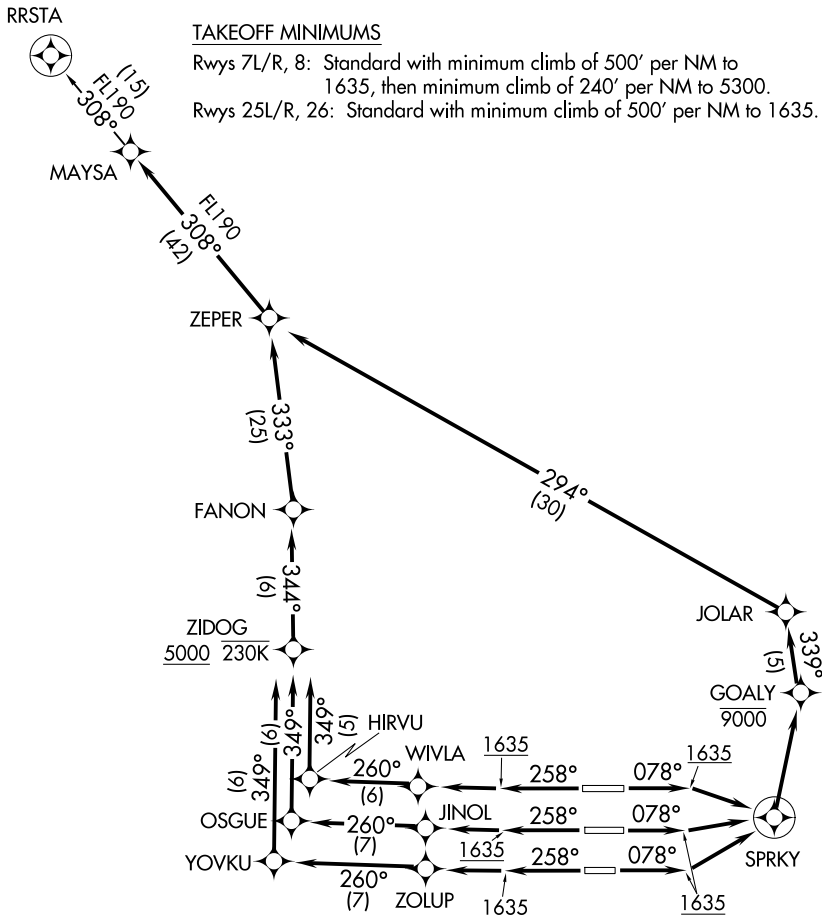
**TOP ALTITUDE:
8000**

D-ATIS
127.575
CLNC DEL
118.1 269.2
CPDLC
GND CON
119.75 269.2 (NORTH)
132.55 269.2 (SOUTH)
PHOENIX TOWER
118.7 278.8 (Rwy 8-26)
120.9 254.3 (Rwys 7L-25R, 7R-25L)
PHOENIX DEP CON
119.2 281.45

NOTE: RNAV 1.
NOTE: Turbojets and turboprops only.
NOTE: RADAR required.
NOTE: DME/DME/IRU or GPS required.

TAKEOFF MINIMUMS

Rwys 7L/R, 8: Standard with minimum climb of 500' per NM to 1635, then minimum climb of 240' per NM to 5300.
Rwys 25L/R, 26: Standard with minimum climb of 500' per NM to 1635.



NOTE: Chart not to scale.

(NARRATIVE ON FOLLOWING PAGE)



DEPARTURE ROUTE DESCRIPTION

TAKEOFF RUNWAYS 7L/R, 8: Climb on heading 078° to 1635, then direct SPRKY, then turn left direct to cross GOALY at or below 9000, then on track 339° to JOLAR, then on track 294° to ZEPER. Thence

TAKEOFF RUNWAY 25L: Climb on heading 258° to 1635, then direct ZOLUP, then on track 260° to YOVKU, then on track 349° to cross ZIDOG at or above 5000 and at or below 230K, then on track 344° to FANON, then on track 333° to ZEPER, thence

TAKEOFF RUNWAY 25R: Climb on heading 258° to 1635, then direct JINOL, then on track 260° to OSGUE, then on track 349° to cross ZIDOG at or above 5000 and at or below 230K, then on track 344° to FANON, then on track 333° to ZEPER, thence

TAKEOFF RUNWAY 26: Climb on heading 258° to 1635, then direct WIVLA, then on track 260° to HIRVU, then on track 349° to cross ZIDOG at or above 5000 and at or below 230K, then on track 344° to FANON, then on track 333° to ZEPER, thence

. . . . on RRSTA transition. Maintain 8000, expect higher altitude 3 minutes after departure.

RRSTA TRANSITION (ZEPER2.RRSTA)

SW-4, 16 APR 2026 to 14 MAY 2026

SW-4, 16 APR 2026 to 14 MAY 2026