

HI-ILS or LOC Y RWY 12

LOC I-MUO 110.3	APCH CRS 122°	Rwy Ldg 13,510 TDZE 2986 Arprt Elev 2996
---------------------------	-------------------------	--

[USAF]

MOUNTAIN HOME AFB (KMUO)

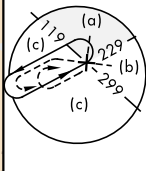
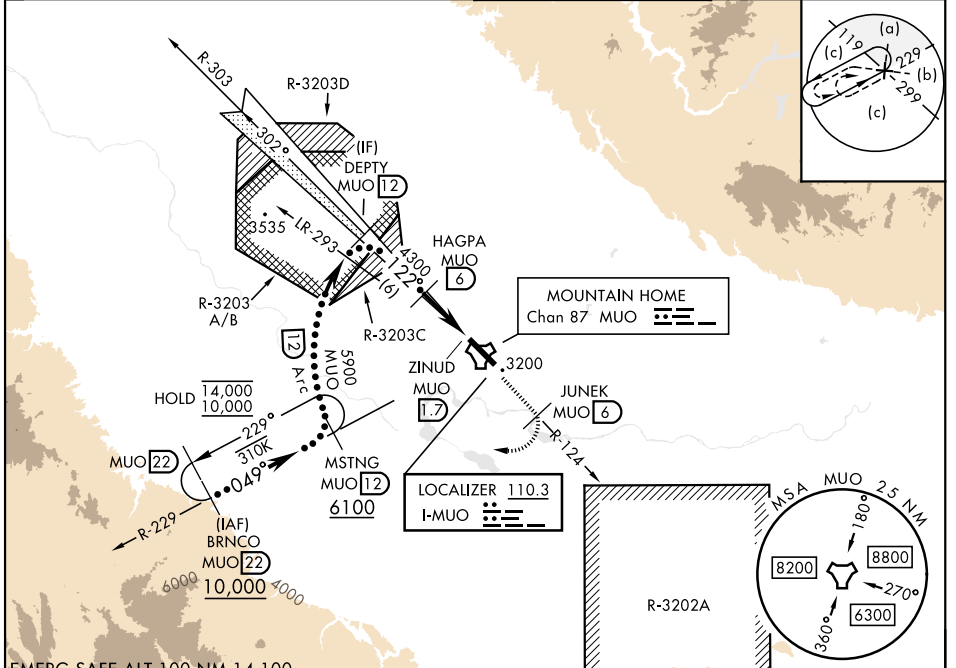
RADAR or DME required

▼ *When ALS inop, increase CAT CDE RVR to 40 and vis to ¼ mile.
**When ALS inop, increase CAT CDE vis to 1¾ miles.
*** Circling not authorized NE of Rwy 12-30.



MISSED APPROACH: Climb to 10,000 on MUO TACAN R-124 to JUNEK/6 DME, then turn right on heading 289° to intercept MUO R-229 to MSTNG/12 DME and hold. Continue climb in hold to 10,000.

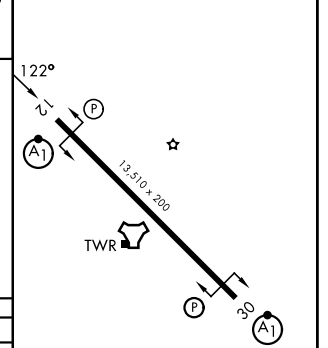
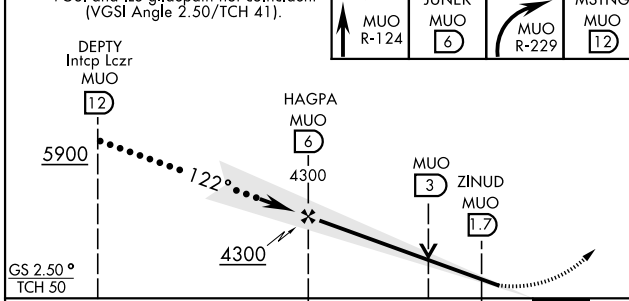
ATIS 273.5	APP CON 124.8 259.1	TOWER 133.85 253.5	GND CON 120.5 275.8
----------------------	-------------------------------	------------------------------	-------------------------------



NW-1, 16 APR 2026 to 14 MAY 2026

NW-1, 16 APR 2026 to 14 MAY 2026

EMERG SAFE ALT 100 NM 14,100	VGSi and ILS glidepath not coincident (VGSi Angle 2.50/TCH 41).	10,000 MUO R-124	JUNEK MUO 6	MSTNG MUO 12	ELEV 2996	TDZE 2986
------------------------------	---	------------------	-------------	--------------	-----------	-----------



CATEGORY	C	D	E
S-ILS 12 *	3186/24	200 (200-½)	
S-LOC 12 **	3500/55	514 (600-1)	
CIRCLING ***	3520-1½ 524 (600-1½)	3560-2 564 (600-2)	3700-2½ 704 (800-2½)

HIRL Rwy 12-30					
FAF to MAP 4.3 NM					
Knots	120	140	160	180	200
Min:Sec	2:09	1:51	1:37	1:26	1:17

HI-ILS or LOC Y RWY 12