

HI-TACAN Y RWY 30

TACAN MUO Chan 87	APCH CRS 295°	Rwy ldg 13,510 TDZE 2996 Arprt Elev 2996
--------------------------	----------------------	---

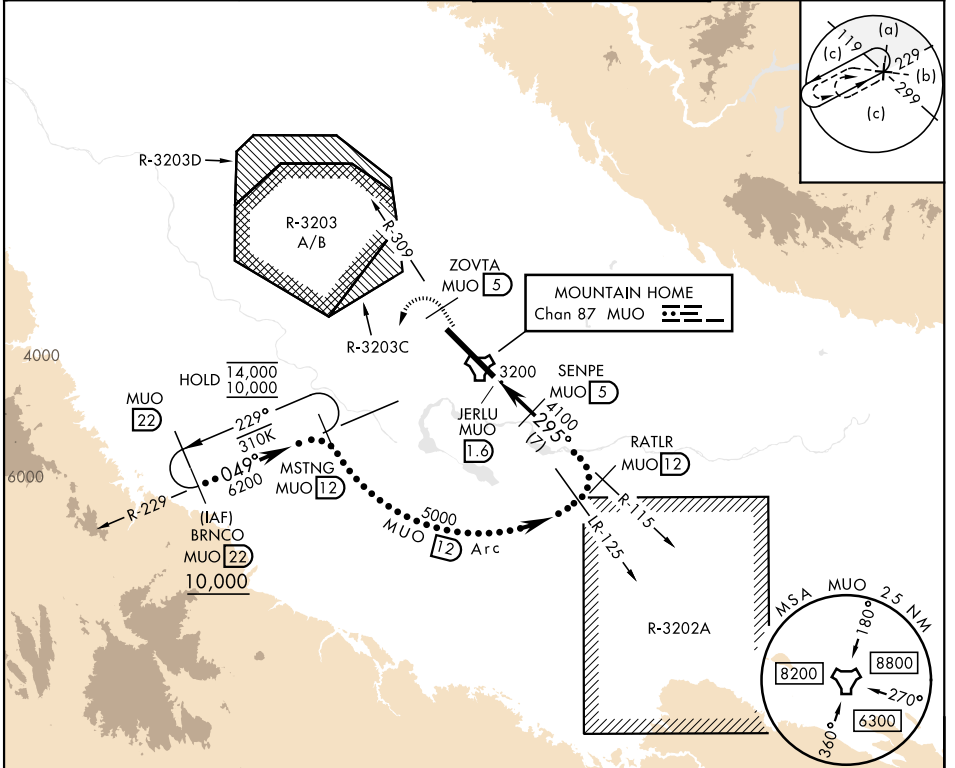
[USAF]

MOUNTAIN HOME AFB (KMUO)

▼ *When ALS inop, increase CAT CDE vis to 1½ miles.
**Circling not authorized NE of Rwy 12-30.

ALSF-1
A1
MISSED APPROACH: Climb to 10,000 on MUO TACAN R-309 to ZOVTA/5 DME, and then turn left heading 169° to intercept MUO R-229 to MSTNG/12 DME and hold, continue climb in hold to 10,000.

ATIS 273.5	APP CON 124.8 259.1	TOWER 133.85 253.5	GND CON 120.5 275.8
----------------------	-------------------------------	------------------------------	-------------------------------

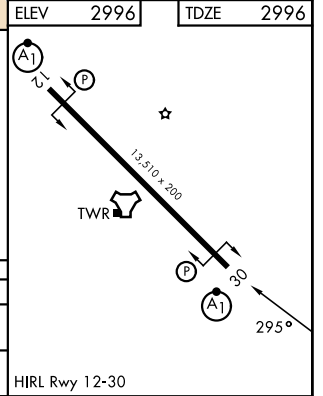


NW-1, 16 APR 2026 to 14 MAY 2026

NW-1, 16 APR 2026 to 14 MAY 2026

EMERG SAFE ALT 100 NM 14,100

10,000 MUO R-309	ZOVTA MUO 5	MUO R-229	MSTNG MUO 12	RATLR MUO 12
MUO TACAN	JERLU MUO 1.6	SENPE MUO 5	4100	5000
0.5		3.4 NM		
CATEGORY	C	D	E	
S-30 *	3520/55 524 (600-1)			
CIRCLING **	3520-1½ 524 (600-1½)	3560-2 564 (600-2)	3700-2½ 704 (800-2½)	



HI-TACAN Y RWY 30