

# ILS or LOC Z RWY 12

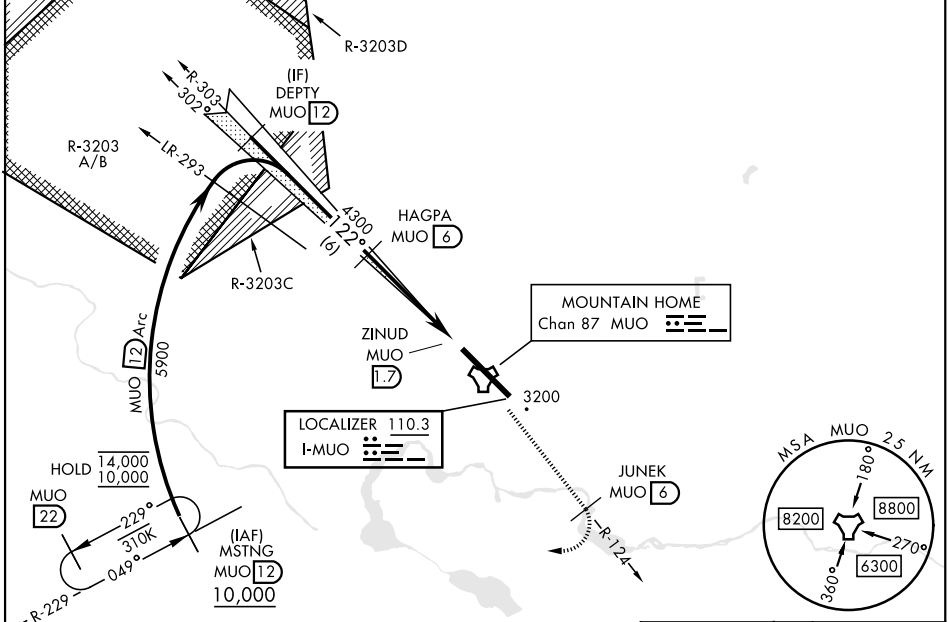
LOC I-MUO <b>110.3</b>	APCH CRS <b>122°</b>	Rwy Idg <b>13,510</b> TDZE <b>2986</b> Arprt Elev <b>2996</b>
---------------------------	-------------------------	--

[USAF]

MOUNTAIN HOME AFB (KMUO)

RADAR or DME required ▼ * When ALS inop, increase RVR to 40, vis to ¾ mile. ** When ALS inop, increase CAT AB RVR to 55 and vis to 1 mile, CAT CDE vis to 1 ½ miles. *** Circling not authorized NE of Rwy 12-30.		ALSF-1 	MISSED APPROACH: Climb to 10,000 on MUO TACAN R-124 to JUNEK/6 DME, then turn right on heading 289° to intercept MUO R-229 to MSTNG/12 DME and hold. Continue climb in hold to 10,000.
--	--	------------	--

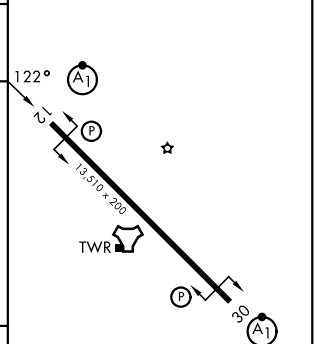
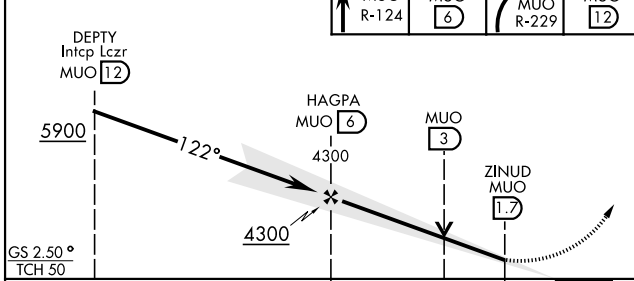
ATIS <b>273.5</b>	APP CON <b>124.8 259.1</b>	TOWER <b>133.85 253.5</b>	GND CON <b>120.5 275.8</b>
----------------------	-------------------------------	------------------------------	-------------------------------



EMERG SAFE ALT 100 NM 14,100

ELEV 2996	TDZE 2986
-----------	-----------

VGSI and ILS glidepath not coincident (VGSI Angle 2.50/TCH 41).



CATEGORY	A	B	C	D	E
S-ILS 12 *	3186/24		200	(200-½)	
S-LOC 12 **	3500/24	514 (600-½)	3500/55	514	(600-1)
CIRCLING ***	3520-1	524 (600-1)	3520-1½ 524 (600-1½)	3560-2 564 (600-2)	3700-2½ 704 (800-2½)

HIRL Rwy 12-30					
FAF to MAP 4.3 NM					
Knots	60	90	120	150	180
Min:Sec	4:18	2:52	2:09	1:43	1:26

# ILS or LOC Z RWY 12

NW-1, 16 APR 2026 to 14 MAY 2026

NW-1, 16 APR 2026 to 14 MAY 2026