


TACAN Z RWY 12

MOUNTAIN HOME AFB (KMUO)

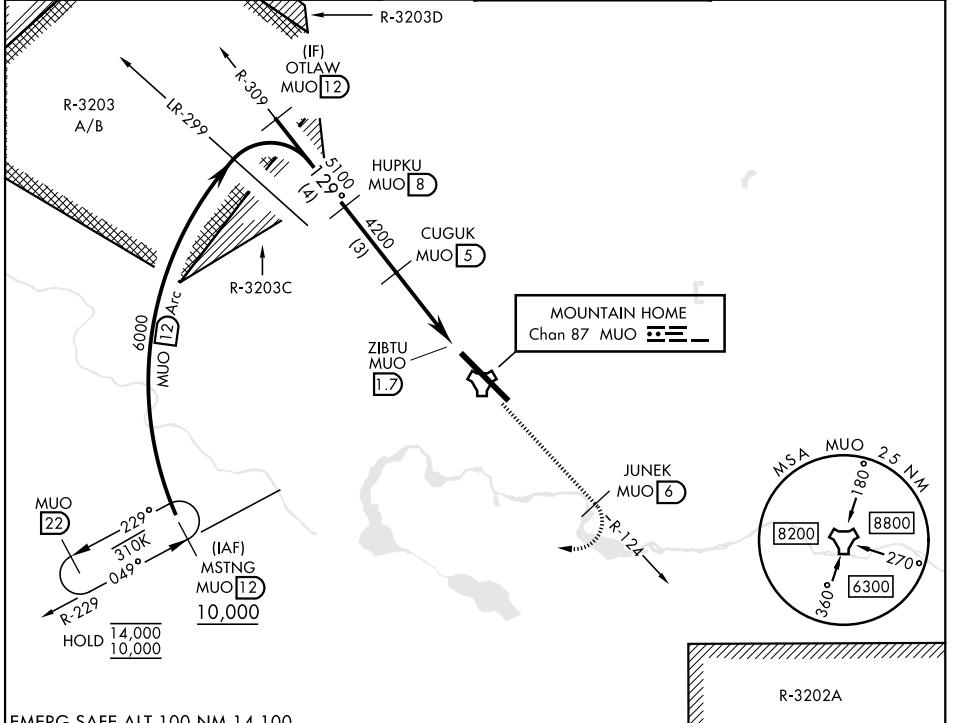
TACAN MUO Chan 87	APCH CRS 129°	Rwy Idg 13,510 TDZE 2986 Arprt Elev 2996
--------------------------	----------------------	---

[USAF]

▼ * When ALS inop, increase CAT AB RVR to 55 and vis to 1 mile, CAT CDE vis to 1½ miles.
** Circling not authorized NE of Rwy 12-30.

ALSF-1  MISSED APPROACH: Climb to 10,000 on MUO TACAN R-124 to JUNEK/6 DME, then turn right on heading 289° to intercept MUO R-229 to MSTNG/12 DME and hold. Continue climb in hold to 10,000.

ATIS 273.5	APP CON 124.8 259.1	TOWER 133.85 253.5	GND CON 120.5 275.8
-------------------	----------------------------	---------------------------	----------------------------

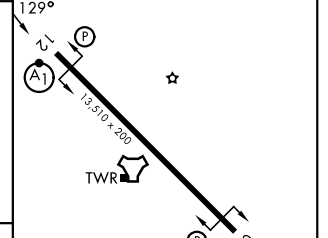
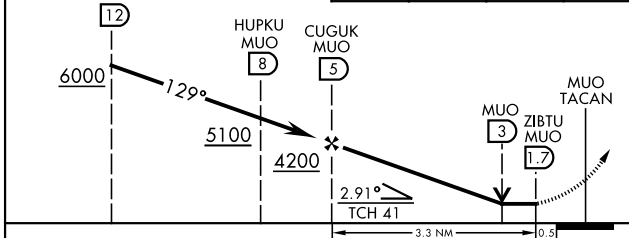


NW-1, 16 APR 2026 to 14 MAY 2026

NW-1, 16 APR 2026 to 14 MAY 2026

EMERG SAFE ALT 100 NM 14,100

VGSI and descent angles not coincident (VGSI Angle 2.50/TCH 41).	10,000 MUO R-124	JUNEK MUO 6	MSTNG MUO 12	ELEV 2996	TDZE 2986
--	------------------	-------------	--------------	-----------	-----------



CATEGORY	A	B	C	D	E
S-12 *	3520/24 534 (600-½)		3520/55 534 (600-1)		
CIRCLING **	3520-1 524 (600-1)		3520-1½ 524 (600-1½)	3560-2 564 (600-2)	3700-2½ 704 (800-2½)

HIRL Rwy 12-30

TACAN Z RWY 12