

MOUNTAIN HOME, IDAHO

# TACAN Z RWY 30

MOUNTAIN HOME AFB (KMUO)

TACAN MUO Chan <b>87</b>	APCH CRS <b>295°</b>	Rwy Ldg TDZE <b>2996</b> Arprt Elev <b>2996</b>
--------------------------	----------------------	--

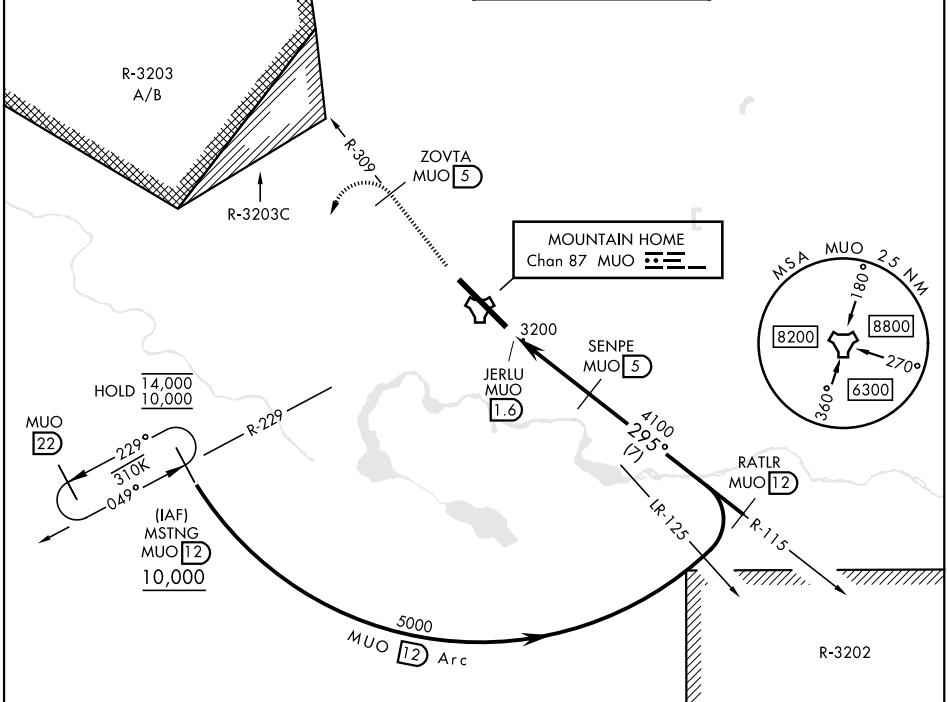
[USAF]

▼ \* When ALS inop, increase CAT AB RVR to 55, vis to 1 mile, CAT CDE vis to 1½ miles.  
 \*\* Circling not authorized NE of Rwy 12-30.



**MISSED APPROACH:** Climb to 10,000 on MUO TACAN R-309 to ZOVTA/5 DME, and then turn left on heading 169° to intercept MUO R-229 to MSTNG/12 DME and hold, continue climb-in-hold to 10,000.

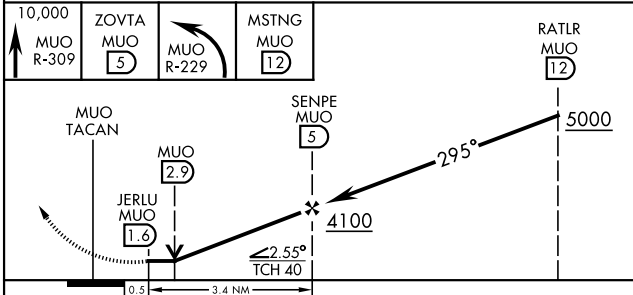
ATIS <b>273.5</b>	APP CON <b>124.8 259.1</b>	TOWER <b>133.85 253.5</b>	GND CON <b>120.5 275.8</b>
-------------------	----------------------------	---------------------------	----------------------------



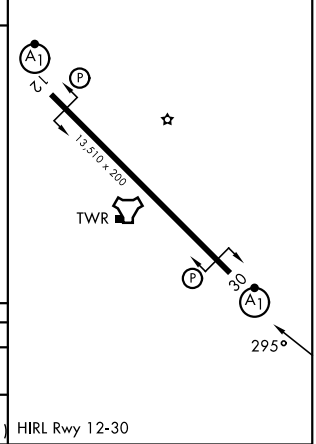
NW-1, 16 APR 2026 to 14 MAY 2026

NW-1, 16 APR 2026 to 14 MAY 2026

EMERG SAFE ALT 100 NM 14,100



ELEV	2996	TDZE	2996
------	------	------	------



CATEGORY	A	B	C	D	E
S-30 *	3520/24 524 (600-½)		3520/55 524 (600-1)		
CIRCLING **	3520-1 524 (600-1)		3520-1½ 524 (600-1½)	3560-2 564 (600-2)	3700-2½ 704 (800-2½)

HIRL Rwy 12-30

MOUNTAIN HOME, IDAHO  
Amdt 4 12JUN25

43°03'N-115°52'W

MOUNTAIN HOME AFB (KMUO)

# TACAN Z RWY 30