

LOC/DME I-PIR 111.9 Chan 56	APP CRS 313°	Rwy Ldg TDZE Apt Elev	6900 1720 1744
--	------------------------	-----------------------------	---

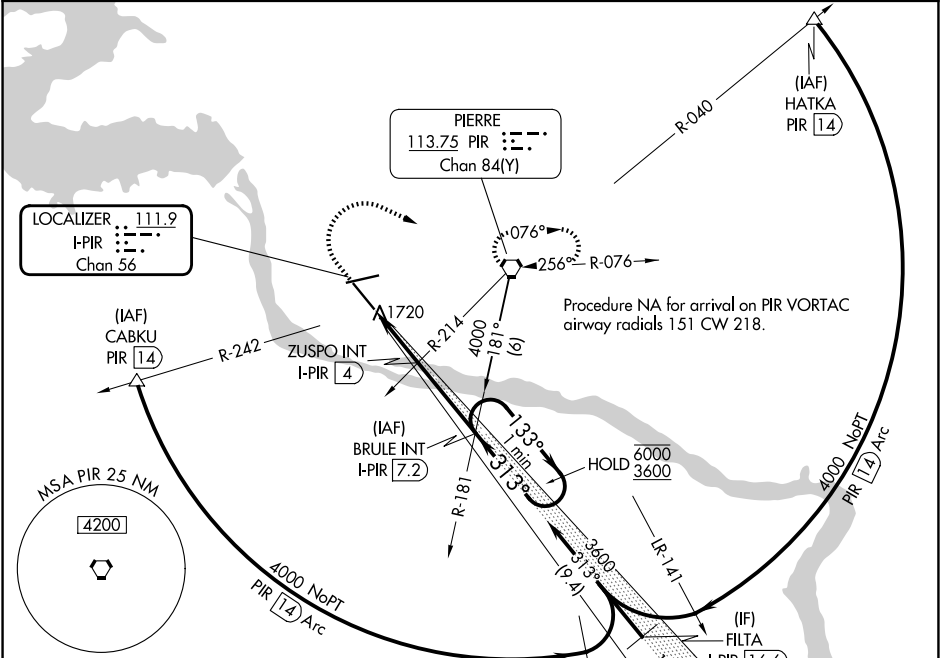
ILS or LOC RWY 31

PIERRE RGNL (PIR)

▲ For inop ALS, increase S-LOC 31 Cat C/D visibility to 7/5 SM.

MALS MISSED APPROACH: Climb to 2400 then climbing right turn to 4000 direct PIR VORTAC and hold, continue climb-in-hold to 4000.

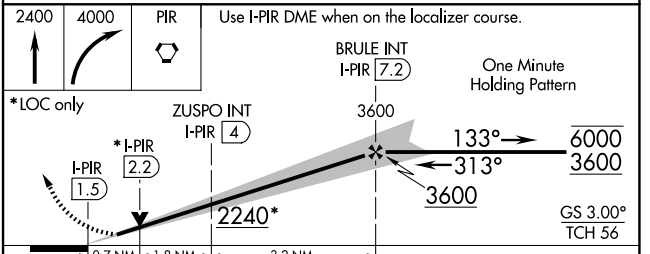
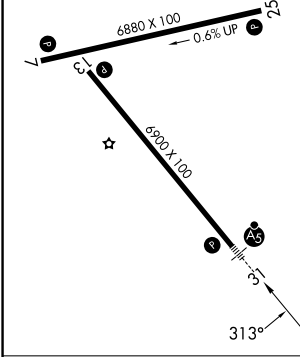
ASOS 119.025	MINNEAPOLIS CENTER 125.1 269.1	CTAF 122.70	UNICOM 122.95
------------------------	--	-----------------------	-------------------------



NC-1, 16 APR 2026 to 14 MAY 2026

NC-1, 16 APR 2026 to 14 MAY 2026

ELEV 1744	D	TDZE 1720
REIL Rwy 7, 13, and 25		
HIRL Rwy 7-25 and 13-31		



CATEGORY	A	B	C	D
S-ILS 31		1920-1/2	200 (200-1/2)	
S-LOC 31		1980-1/2	260 (300-1/2)	
CIRCLING	2240-1 496 (500-1)	2300-1 556 (600-1)	2400-1 3/4 656 (700-1 3/4)	2460-2 1/4 716 (800-2 1/4)

PIERRE, SOUTH DAKOTA
Amdt 13 21MAY20

44°23'N-100°17'W

ILS or LOC RWY 31

PIERRE RGNL (PIR)