

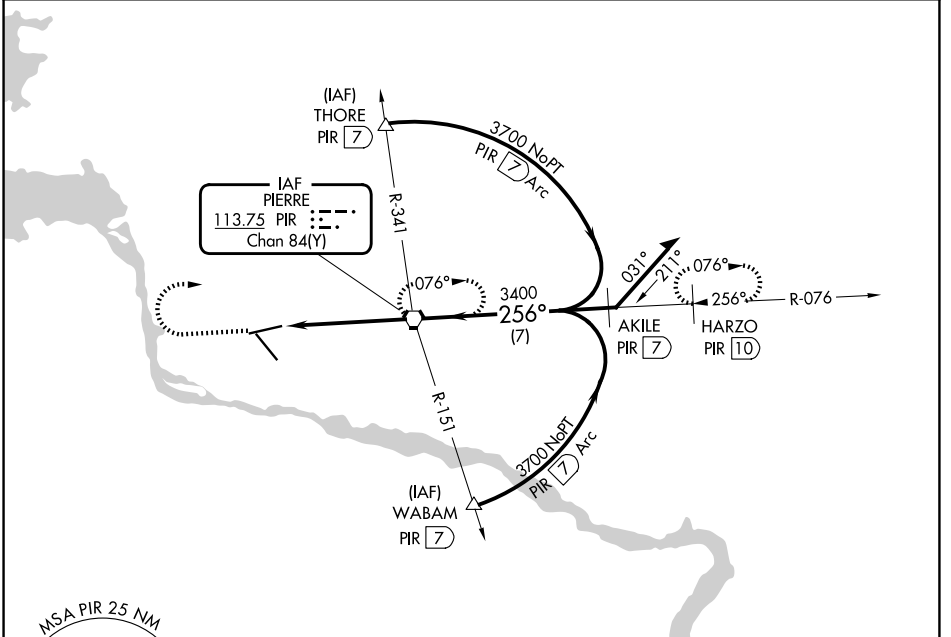
VORTAC PIR <b>113.75</b> Chan 84(Y)	APP CRS <b>256°</b>	Rwy Ldg TDZE Apt Elev <b>6880</b> <b>1725</b> <b>1744</b>
---	------------------------	--

# VOR or TACAN RWY 25

PIERRE RGNL (PIR)

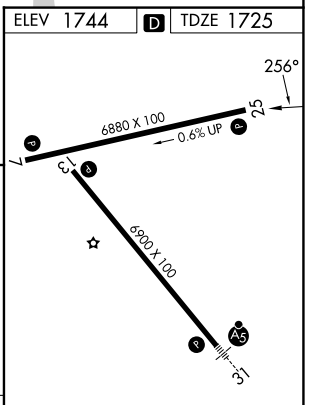
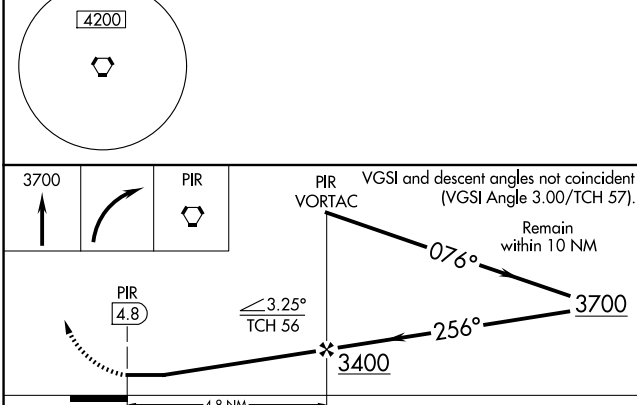
**⚠** MISSED APPROACH: Climb to 3700 then right turn direct PIR VORTAC and hold. (TACAN aircraft continue via PIR R-076 to HARZO 10 DME and hold east, right turns, 256° inbound)

ASOS <b>119.025</b>	MINNEAPOLIS CENTER <b>125.1 269.1</b>	CTAF <b>122.7</b>	UNICOM <b>122.95</b>
------------------------	--	----------------------	-------------------------



NC-1, 16 APR 2026 to 14 MAY 2026

NC-1, 16 APR 2026 to 14 MAY 2026



CATEGORY	A	B	C	D	REIL Rwy 7, 13, and 25 HIRL Rwy 7-25 and 13-31 FAF to MAP 4.8 NM
	S-25	2120-1	395 (400-1)	2120-1 1/4 395 (400-1 1/4)	
CIRCLING	2240-1 496 (500-1)	2300-1 556 (600-1)	2400-1 1/4 656 (700-1 1/4)	2460-2 1/4 716 (800-2 1/4)	Knots Min:Sec
					60 4:48 90 3:12 120 2:24 150 1:55 180 1:36