

WAAS CH 69607 W35A	APP CRS 350°	Rwy Ldg TDZE Apt Elev	8900 4665 4697
--	------------------------	-----------------------------	---

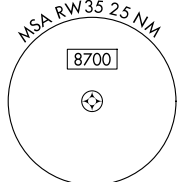
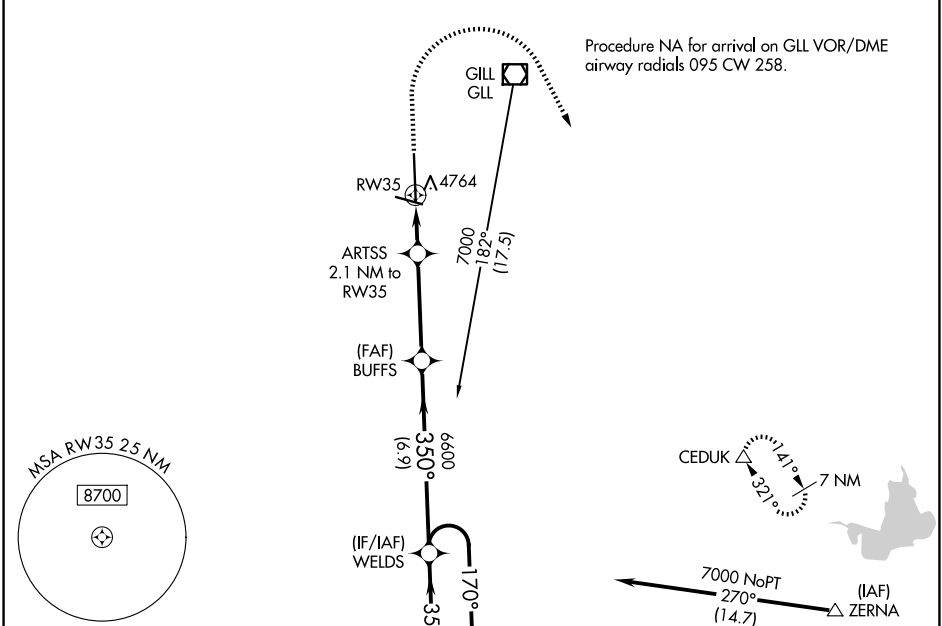
RNAV (GPS) RWY 35

GREELEY-WELD COUNTY (GXY)

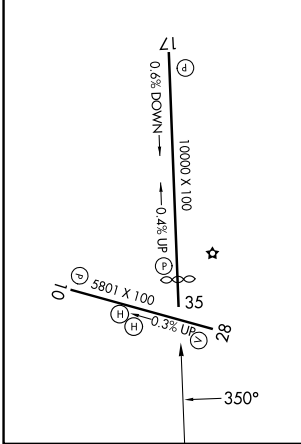
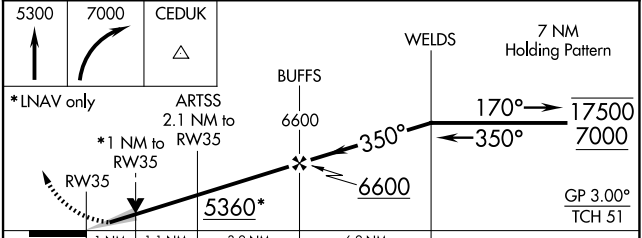
RNP APCH.
 For uncompensated Baro-VNAV systems, LNAV/VNAV NA below -24°C or above 54°C.

MISSED APPROACH: Climb to 5300 then climbing right turn to 7000 direct CEDUK and hold.

AWOS-3PT 135.175	DENVER APP CON 134.85 251.125	UNICOM 122.7 (CTAF) 0
----------------------------	---	---------------------------------



ELEV 4697	TDZE 4665
REIL Rwy's 10, 17, 28 and 35	MIRL Rwy's 10-28 and 17-35



CATEGORY	A	B	C	D
LPV DA		4865- ³ / ₄	200 (200- ³ / ₄)	
LNAV/VNAV DA		4935- ⁷ / ₈	270 (300- ⁷ / ₈)	
LNAV MDA	5020-1	355 (400-1)	5020-1 ¹ / ₈	355 (400-1 ¹ / ₈)
CIRCLING	5120-1 423 (500-1)	5200-1 503 (600-1)	5200-1 ¹ / ₂ 503 (600-1 ¹ / ₂)	5380-2 ¹ / ₄ 683 (700-2 ¹ / ₄)

SW-1, 16 APR 2026 to 14 MAY 2026

SW-1, 16 APR 2026 to 14 MAY 2026