

SKYEE ONE DEPARTURE (RNAV)

AL-325 (FAA)

**TOP ALTITUDE:
FL230**

CLNC DEL
126.65
DENVER DEP CON
134.85 251.125

TAKEOFF MINIMUMS

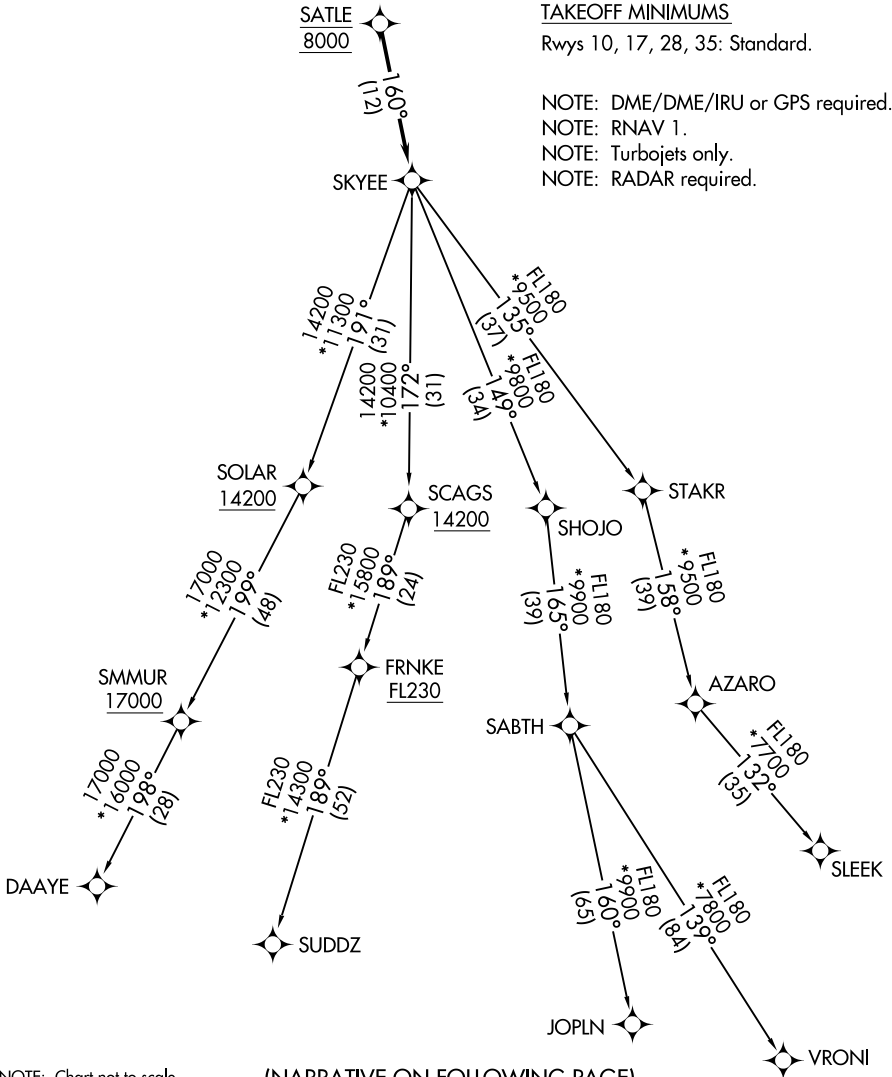
Rwys 10, 17, 28, 35: Standard.

NOTE: DME/DME/IRU or GPS required.

NOTE: RNAV 1.

NOTE: Turbojets only.

NOTE: RADAR required.



SW-1, 16 APR 2026 to 14 MAY 2026

SW-1, 16 APR 2026 to 14 MAY 2026

NOTE: Chart not to scale.

(NARRATIVE ON FOLLOWING PAGE)

SKYEE ONE DEPARTURE (RNAV)



DEPARTURE ROUTE DESCRIPTION

TAKEOFF RUNWAY 10: Climb on a heading between 292° CW 214° as assigned by ATC. Thence. . . .

TAKEOFF RUNWAY 17: Climb on a heading between 350° CW 212° as assigned by ATC. Thence. . . .

TAKEOFF RUNWAY 28: Climb on a heading between 294° CW 097° or between 097° CW 209° as assigned by ATC. Thence. . . .

TAKEOFF RUNWAY 35: Climb on a heading between 293° CW 169° as assigned by ATC. Thence. . . .

. . . . expect RADAR vectors to cross SATLE at 8000 then on track 160° to SKYEE then on (transition) maintain FL230 or filed lower altitude. Expect higher filed altitude ten minutes after departure.

DAAYE TRANSITION (SKYEE1 .DAAYE)

JOPLN TRANSITION (SKYEE1 .JOPLN)

SLEEK TRANSITION (SKYEE1 .SLEEK)

SUDDZ TRANSITION (SKYEE1 .SUDDZ)

VRONI TRANSITION (SKYEE1 .VRONI)

SW-1, 16 APR 2026 to 14 MAY 2026

SW-1, 16 APR 2026 to 14 MAY 2026