


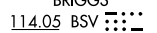
ALLEGHENY NINE DEPARTURE


**TOP ALTITUDE:
3000**

ATIS
120.55
GND CON
121.7
ALLEGHENY TOWER
121.1 239.0
PITTSBURGH DEP CON
119.35 285.575

AKRON
114.4 ACO 
Chan 91

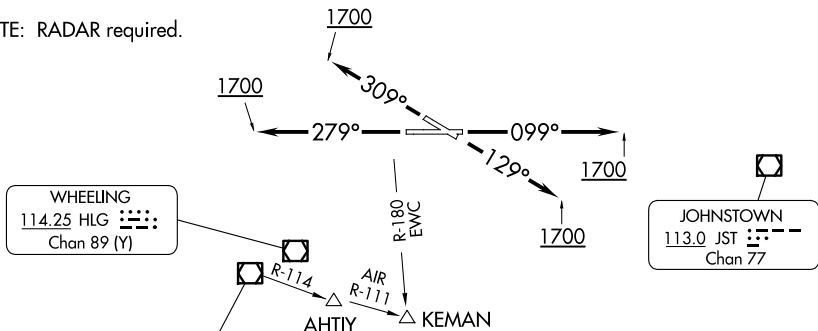
FRANKLIN
109.6 FKL 


BRIGGS
114.05 BSV 
Chan 87 (Y)

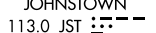
ELLWOOD CITY
115.8 EWC 
Chan 105

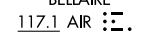
TYROO 

NOTE: RADAR required.

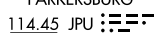


WHEELING
114.25 HLG 
Chan 89 (Y)

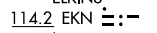
JOHNSTOWN
113.0 JST 
Chan 77

BELLAIRE
117.1 AIR 
Chan 118

TAKEOFF MINIMUMS
Rwys 10, 28, 31: Standard.
Rwy 13: Standard with minimum
climb of 205' per NM to 1800.

PARKERSBURG
114.45 JPU 
Chan 91(Y)

MORGANTOWN
111.6 MGW 
Chan 53

ELKINS
114.2 EKN 
Chan 89

DEPARTURE ROUTE DESCRIPTION

TAKEOFF RUNWAY 10: Climb heading 099° until 1700 thence....
TAKEOFF RUNWAY 13: Climb heading 129° until 1700 thence....
TAKEOFF RUNWAY 28: Climb heading 279° until 1700 thence....
TAKEOFF RUNWAY 31: Climb heading 309° until 1700 thence....

....expect vectors to assigned route/fix. Maintain 3000. Expect further clearance to requested altitude 10 minutes after departure.

NOTE: Chart not to scale.

ALLEGHENY NINE DEPARTURE