

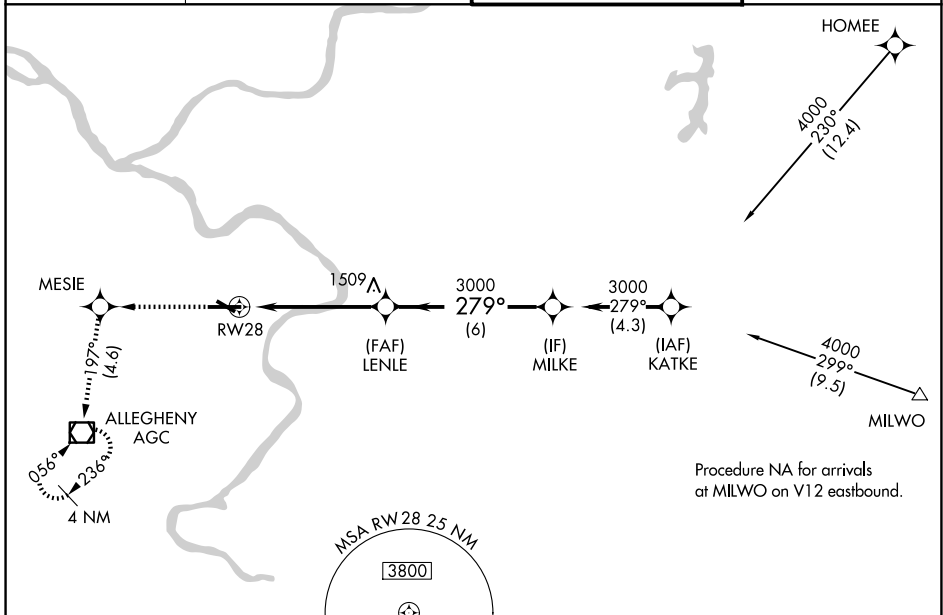
WAAS CH 65625 W28A	APP CRS 279°	Rwy Ldg TDZE 1251 Apt Elev 1252
--	------------------------	---

RNAV (GPS) RWY 28

ALLEGHENY COUNTY (AGC)

RNP APCH - GPS.	MALS	MISSED APPROACH: Climb to 3000 direct MESIE and on 197° track to AGC VOR/DME and hold, continue climb-in-hold to 3000.
<p>⚠ For uncompensated Baro-VNAV systems, LNAV/VNAV NA below -16°C or above 54°C. Autopilot coupled approach NA below 1900. Inop table does not apply to LPV; for inop ALS increase LNAV/VNAV all Cats to RVR 4500. Circling Rwy 13 NA at night.</p>		

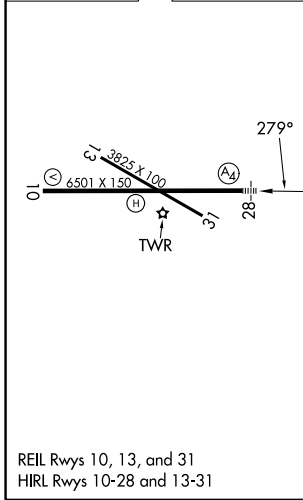
ATIS 120.55	PITTSBURGH APP CON 119.35 285.575	ALLEGHENY TOWER 121.1 239.0	GND CON 121.7
-----------------------	---	---------------------------------------	-------------------------



NE-4, 16 APR 2026 to 14 MAY 2026

NE-4, 16 APR 2026 to 14 MAY 2026

ELEV 1252	TDZE 1251
------------------	------------------



3000	MESIE	tr 197°	AGC	LENLE	MILKE
				3000	3000
				3000	GP 3.05° TCH 51
				1 NM	4.2 NM
				1 NM	6 NM
CATEGORY	A	B	C	D	
LPV DA		1501/40	250 (300-¾)		
LNAV/VNAV DA		1546/40	295 (300-¾)		
LNAV MDA	1640/40	389 (400-¾)	1640/55	389 (400-1)	
CIRCLING	1720-1	468 (500-1)	1980-2 728 (800-2)	1980-2¼ 728 (800-2¼)	