

|  |                        |   |
|--|------------------------|---|
| VOR/DME PIH<br><b>112.6</b><br>Chan 73 | APP CRS<br><b>033°</b> | Rwy Ldg<br>TDZE <b>4444</b><br>Apt Elev <b>4452</b> |
|--|------------------------|---|

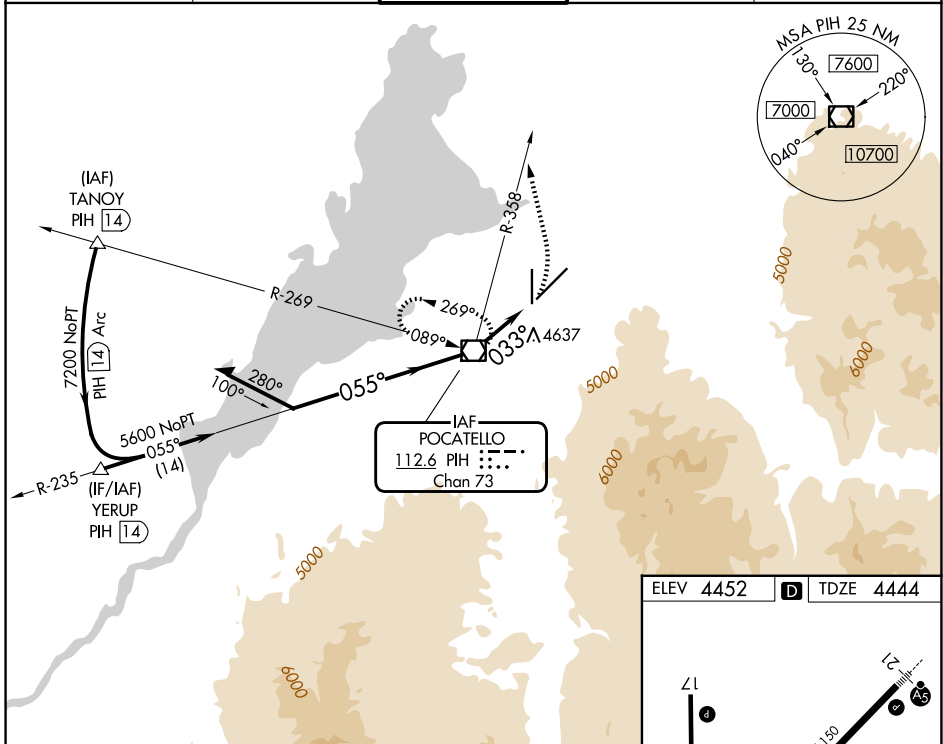
# VOR RWY 3

POCATELLO RGNL (PIH)

**⚠** Circling to Rwy 35 NA at night. When VGSI inop, Straight-In/Circling Rwy 3 procedure NA at night. Circling NA southeast of Rwy 3-21. Visibility reduction by helicopters NA. When local altimeter setting not received, use Idaho Falls altimeter setting and increase all MDA 140 feet, and increase visibility S-3 Cat C ½ mile and Circling Cat C ¼ mile.

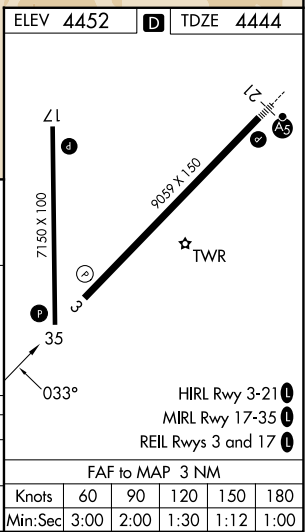
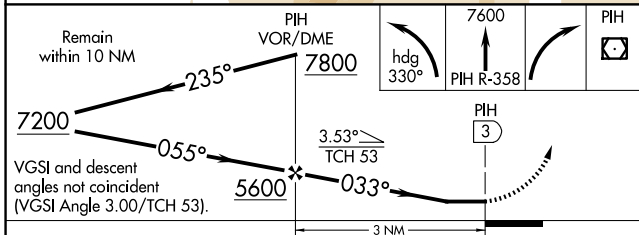
**MISSED APPROACH:** Climbing left turn on heading 330° and PIH VOR/DME R-358 to 7600 then right turn direct PIH VOR/DME and hold.

|                        |  |   |                         |                         |
|------------------------|--|---|-------------------------|-------------------------|
| ATIS<br><b>135.625</b> | SALT LAKE CENTER<br><b>128.35 239.25</b> | <b>POCATELLO TOWER*</b><br><b>119.1</b> (CTAF) <b>0 257.8</b> | GND CON<br><b>121.9</b> | UNICOM<br><b>122.95</b> |
|------------------------|--|---|-------------------------|-------------------------|



NW-1, 16 APR 2026 to 14 MAY 2026

NW-1, 16 APR 2026 to 14 MAY 2026



| CATEGORY | A                     | B                     | C                             | D  |
|----------|-----------------------|-----------------------|-------------------------------|----|
| S-3      | 4940-1                | 496 (500-1)           | 4940-1 3/8<br>496 (500-1 3/8) | NA |
| CIRCLING | 5000-1<br>548 (600-1) | 5020-1<br>568 (600-1) | 5060-1 3/4<br>608 (700-1 3/4) | NA |