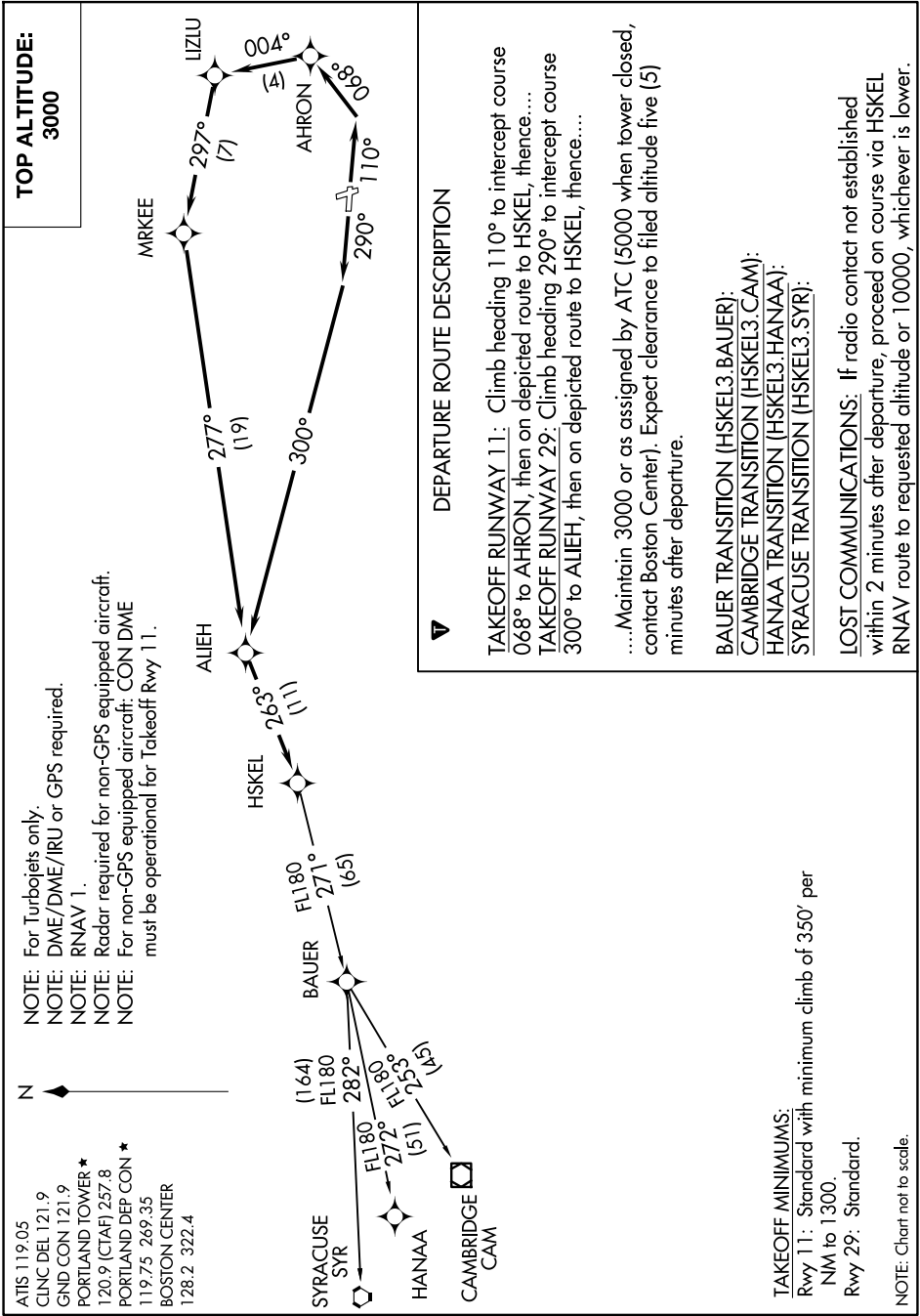


HSKEL THREE DEPARTURE (RNAV)

NE-1, 16 APR 2026 to 14 MAY 2026



NOTE: For Turbojets only.
NOTE: DME/DME/IRU or GPS required.
NOTE: RNAV 1.

NOTE: Radar required for non-GPS equipped aircraft.
NOTE: For non-GPS equipped aircraft: CON DME must be operational for Takeoff Rwy 11.



ATIS 119.05
CLNC DEL 121.9
GND CON 121.9
PORTLAND TOWER *
120.9 (CTAF) 257.8
PORTLAND DEP CON *
119.75 269.35
BOSTON CENTER
128.2 322.4

SYRACUSE SYR (164)
FL180
282°
HANAA (51)
FL180
272°
CAMBRIDGE CAM (15)
FL180
255°
BAUER (65)
FL180
271°
HSKEL (11)
263°
ALIEH (119)
277°
MRKEE (7)
297°
LIZLU (4)
004°
AHRON (890)
0890
290°
110°

NE-1, 16 APR 2026 to 14 MAY 2026