

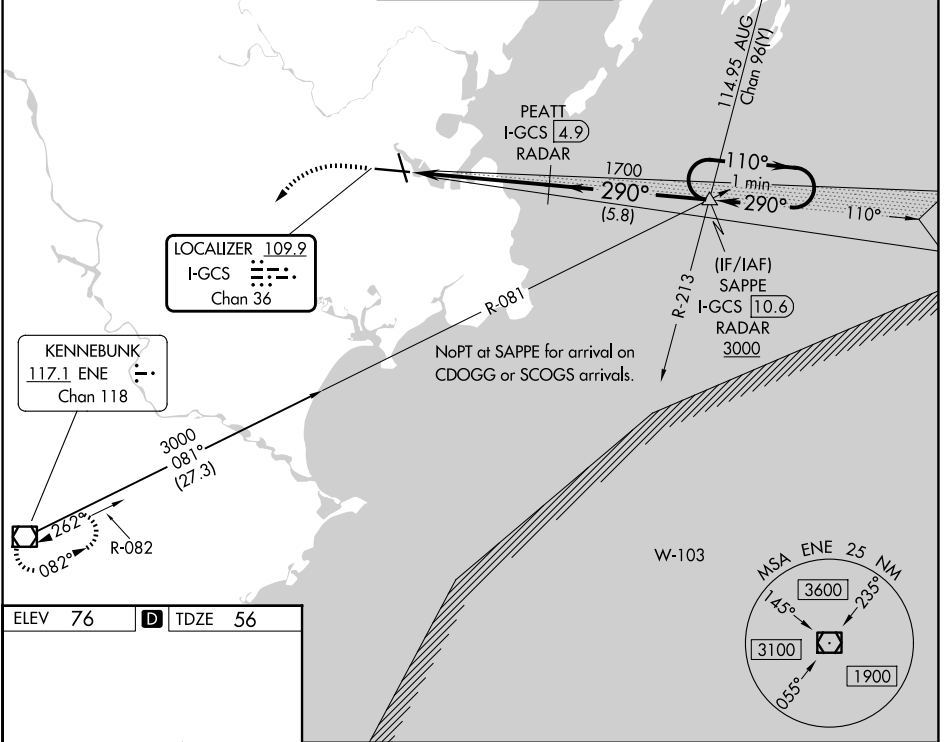
LOC/DME I-GCS 109.9 Chan 36	APP CRS 290°	Rwy Ldg 7200 TDZE 56 Apt Elev 76
---	------------------------	---

ILS RWY 29 (SA CAT I & II)

PORTLAND INTL JETPORT (PWM)

<p>▽ DME or RADAR required. DME required when Portland approach control closed. ▲ Procedure NA when control tower closed. SA CAT I: Requires specific OPSPEC, MSPEC, or LOA approval and use of HUD to DH. SA CAT II: Reduced lighting requires specific OPSPEC, MSPEC, or LOA approval and use of Autoland or HUD to touchdown.</p>	<p>MALSR </p>	<p>MISSED APPROACH: Climb to 700 then climbing left turn to 3000 direct ENE VOR/DME and hold.</p>
---	--------------------	--

ATIS 119.05	PORTLAND APP CON ★ 119.75 269.35	PORTLAND TOWER ★ 120.9 0 (CTAF) 257.8	GND CON 121.9	UNICOM 122.95
-----------------------	--	---	-------------------------	-------------------------



ELEV 76	D	TDZE 56
---------	----------	---------

TWR
 0.5% U.S.
 7200 X 150
 36
 18
 11-29

700	3000	ENE	PEATT I-GCS 4.9 RADAR	SAPPE I-GCS 10.6 RADAR	One Minute Holding Pattern
-----	------	-----	-----------------------	------------------------	----------------------------

GS 3.00° TCH 50

CATEGORY	A	B	C	D
S-ILS 29	SA CAT I	RA 206/14	150 DA 206	
S-ILS 29	SA CAT II	RA 146/12	100 DA 156	

SA CATEGORY I & II ILS - SPECIAL AIRCREW & AIRCRAFT CERTIFICATION REQUIRED

NE-1, 16 APR 2026 to 14 MAY 2026

NE-1, 16 APR 2026 to 14 MAY 2026