

NUBLE FOUR DEPARTURE (RNAV)

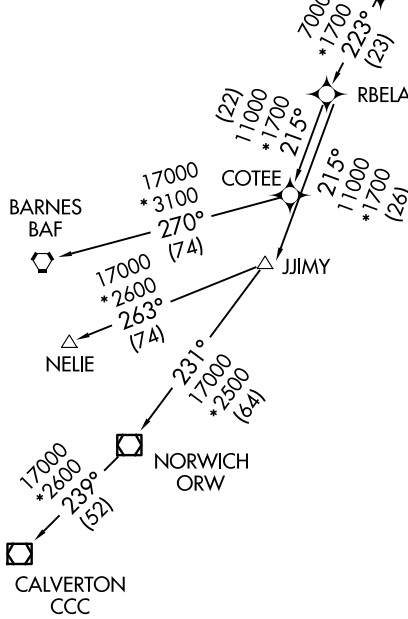
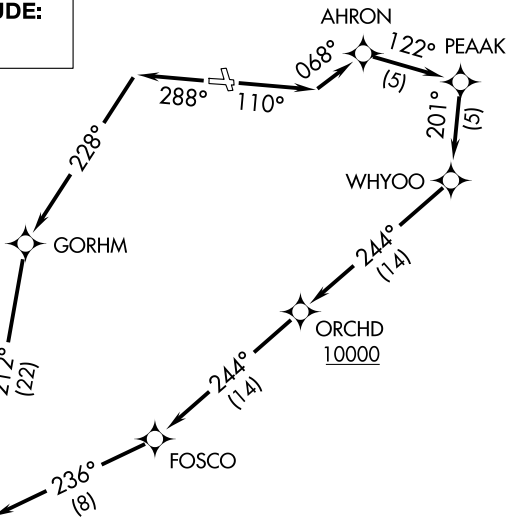
ATIS 119.05
CLNC DEL 121.9
GND CON 121.9
PORTLAND TOWER *
120.9 (CTAF) 257.8
PORTLAND DEP CON *
119.75 269.35
BOSTON CENTER
128.2 322.4

**TOP ALTITUDE:
3000**

TAKEOFF MINIMUMS:

Rwy 11: Standard with a minimum climb of 500' per NM to 576.
Rwy 29: Standard.

NOTE: For Turbojets only.
NOTE: DME/DME/IRU or GPS required.
NOTE: RNAV 1.
NOTE: Radar required for non-GPS equipped aircraft.



DEPARTURE ROUTE DESCRIPTION

TAKEOFF RUNWAY 11: Climb heading 110° to intercept course 068° to AHRON, then on track 122° to PEAACK, then on track 201° to WHYOO, then on track 244° to cross ORCHD at or above 10000, then on depicted route to NUBLE, thence....

TAKEOFF RUNWAY 29: Climb heading 288° to intercept 228° to GORHM, then on depicted route to NUBLE, thence....

....Maintain 3000 or as assigned by ATC (5000 when tower closed, contact Boston Center). Expect clearance to filed altitude five (5) minutes after departure.

BARNES TRANSITION (NUBLE4.BAF):
CALVERTON TRANSITION (NUBLE4.CCC):
JJIMY TRANSITION (NUBLE4.JJIMY):
NELIE TRANSITION (NUBLE4.NELIE):

LOST COMMUNICATIONS: If radio contact not established within 2 minutes after departure, proceed on course via NUBLE RNAV route to requested altitude or 10000 whichever is lower.

NE-1, 16 APR 2026 to 14 MAY 2026

NE-1, 16 APR 2026 to 14 MAY 2026

NOTE: Chart not to scale.