

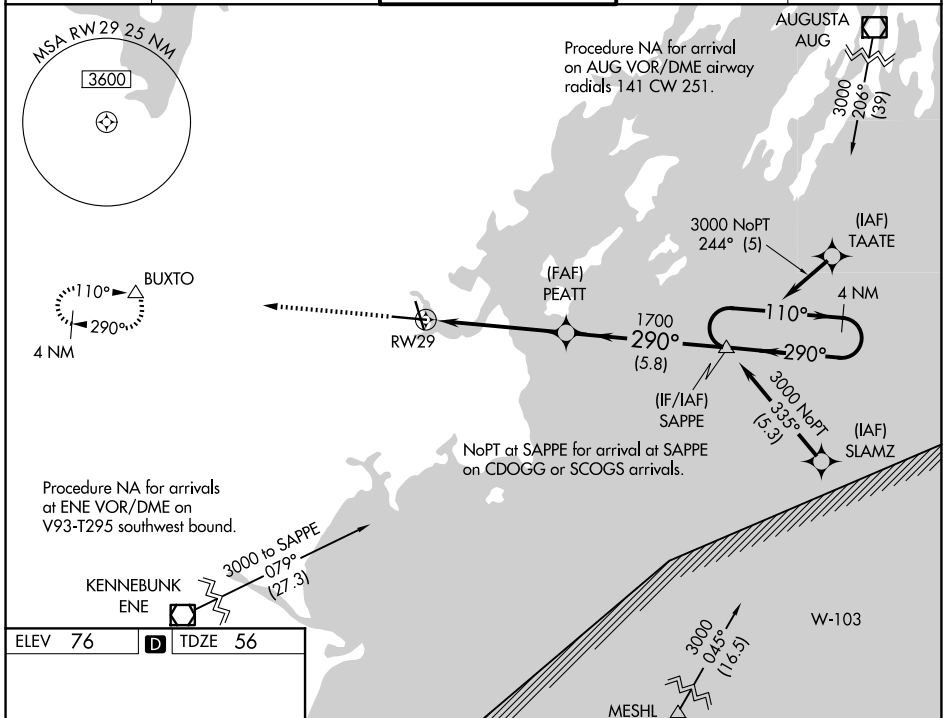
WAAS CH 65626 W29A	APP CRS 290°	Rwy Ldg 7200 TDZE 56 Apt Elev 76
--	------------------------	---

RNAV (GPS) RWY 29

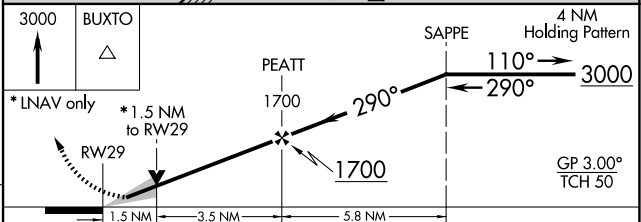
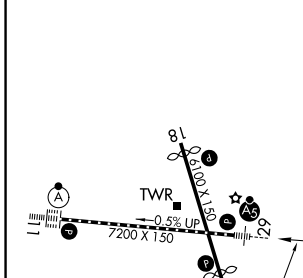
PORTLAND INTL JETPORT (P^{WM})

RNP APCH	<p>▼ For uncompensated Baro-VNAV systems, LNAV/VNAV NA below -18°C or above 54°C. For inop MALSR, increase LNAV/VNAV all Cats visibility to 1½ mile, increase LNAV Cat C/D visibility to 1¾ mile. **RVR 1800 authorized with use of FD or AP or HUD to DA.</p>	<p>MALSR</p>	<p>MISSED APPROACH: Climb to 3000 direct BUXTO and hold, continue climb-in-hold to 3000.</p>
----------	--	--------------	--

ATIS 119.05	PORTLAND APP CON * 119.75 269.35	PORTLAND TOWER * 120.9 (CTAF) 257.8	GND CON 121.9	UNICOM 122.95
-----------------------	--	--	-------------------------	-------------------------



ELEV 76	D	TDZE 56
---------	----------	---------



CATEGORY	A	B	C	D
LPV DA	** 256/24 200 (200-½)			
LNAV/VNAV DA	567-1¾ 511 (500-1¾)			
LNAV MDA	580/24	524 (600-½)	580/55	524 (600-1)
CIRCLING	620-1 544 (600-1)	640-1 564 (600-1)	740-1¾ 664 (700-1¾)	860-2½ 784 (800-2½)

- TDZL/RCLS Rwy 11
- MIRL Rwy 18-36
- HIRL Rwy 11-29
- REIL Rws 18 and 36

NE-1, 16 APR 2026 to 14 MAY 2026

NE-1, 16 APR 2026 to 14 MAY 2026