

APP CRS	Rwy Ldg	7200
290°	TDZE	56
	Apt Elev	76

RNAV (RNP) Z RWY 29

PORTLAND INTL JETPORT (PWM)

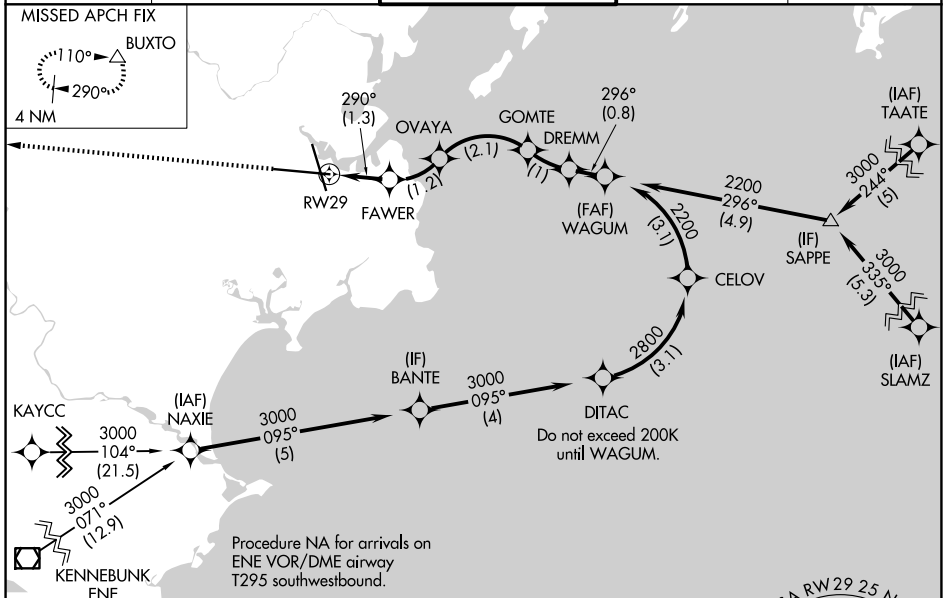
RNP AR APCH - GPS, RF. Authorization required.

▼ For uncompensated Baro-VNAV systems, procedure NA below -15°C or above 54°C. For inop ALS, increase RNP 0.10 all Cats visibility to 4000. For inop ALS, increase RNP 0.13 all Cats visibility to 6000. For inop ALS, increase RNP 0.30 all Cats visibility to 1 3/8 SM. When local altimeter setting not received, procedure NA. Procedure NA for aircraft with wingspan greater than 136 feet.

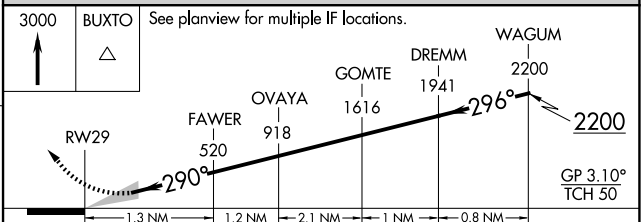
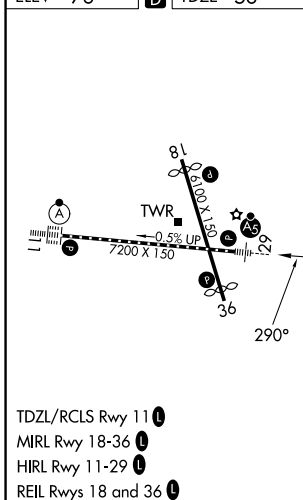


MISSED APPROACH: Climb to 3000 direct BUXTO and hold, continue climb-in-hold to 3000.

ATIS 119.05	PORTLAND APP CON ★ 119.75 269.35	PORTLAND TOWER ★ 120.9 0 (CTAF) 257.8	GND CON 121.9	UNICOM 122.95
-----------------------	--	---	-------------------------	-------------------------



ELEV 76	D	TDZE 56
---------	----------	---------



CATEGORY	A	B	C	D
RNP 0.10 DA		306/24	250 (300-1/2)	
RNP 0.13 DA		438/35	382 (400-5/8)	
RNP 0.30 DA		533/50	477 (500-1)	

AUTHORIZATION REQUIRED

NE-1, 16 APR 2026 to 14 MAY 2026

NE-1, 16 APR 2026 to 14 MAY 2026