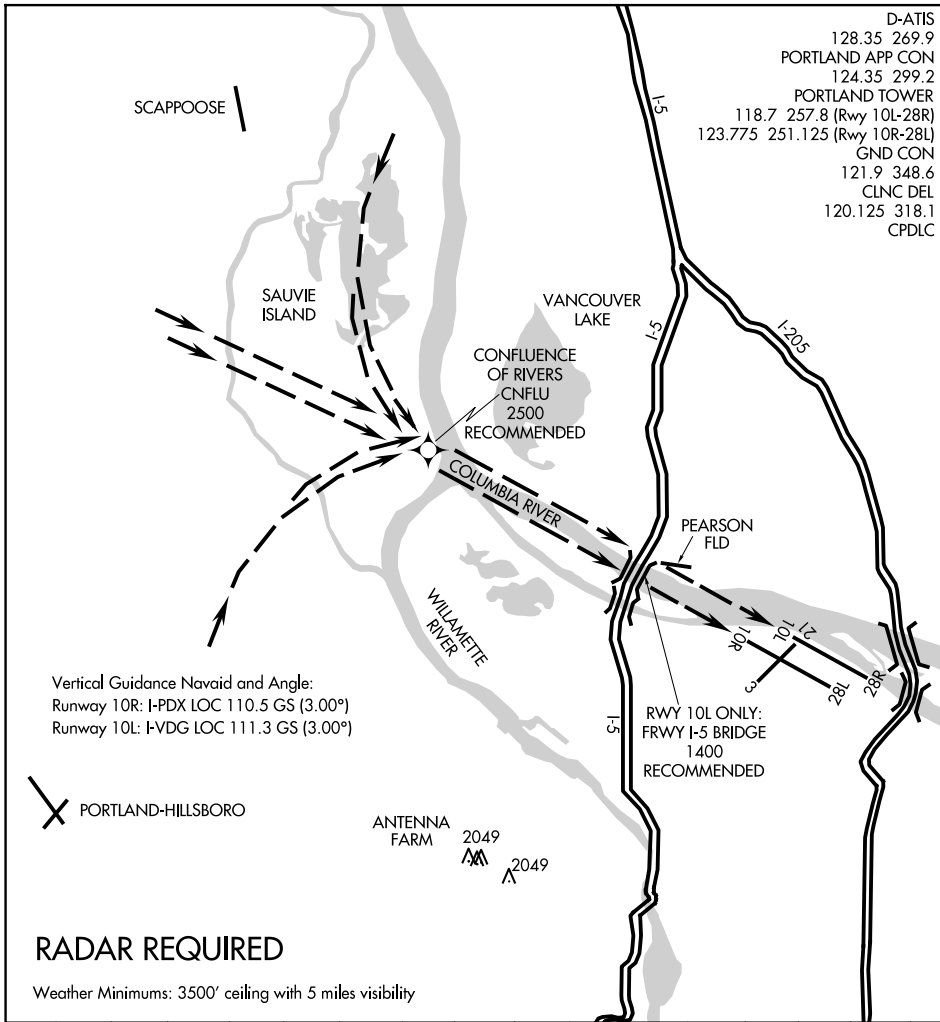


# COLUMBIA VISUAL RWY 10L/R

AL-330 (FAA)

PORTLAND INTL (PDX)  
PORTLAND, OREGON

D-ATIS  
128.35 269.9  
PORTLAND APP CON  
124.35 299.2  
PORTLAND TOWER  
118.7 257.8 (Rwy 10L-28R)  
123.775 251.125 (Rwy 10R-28L)  
GND CON  
121.9 348.6  
CLNC DEL  
120.125 318.1  
CPDLC



NW-1, 16 APR 2026 to 14 MAY 2026

NW-1, 16 APR 2026 to 14 MAY 2026

## RADAR REQUIRED

Weather Minimums: 3500' ceiling with 5 miles visibility

|   |   |   |   |   |   |   |   |   |    |    |    |    |    |    |    |
|---|---|---|---|---|---|---|---|---|----|----|----|----|----|----|----|
| 1 | 2 | 3 | 4 | 5 | 6 | 7 | 8 | 9 | 10 | 11 | 12 | 13 | 14 | 15 | 16 |
|---|---|---|---|---|---|---|---|---|----|----|----|----|----|----|----|

COLUMBIA VISUAL RWY 10L/R  
PROCEDURE NOT AUTHORIZED AT NIGHT

# COLUMBIA VISUAL RWY 10L/R

Amdt 3 02MAY13

45°35'N-122°36'W

PORTLAND, OREGON  
PORTLAND INTL (PDX)