

(HRMNS6.HRMNS) 24305

HRMNS SIX DEPARTURE (RNAV)

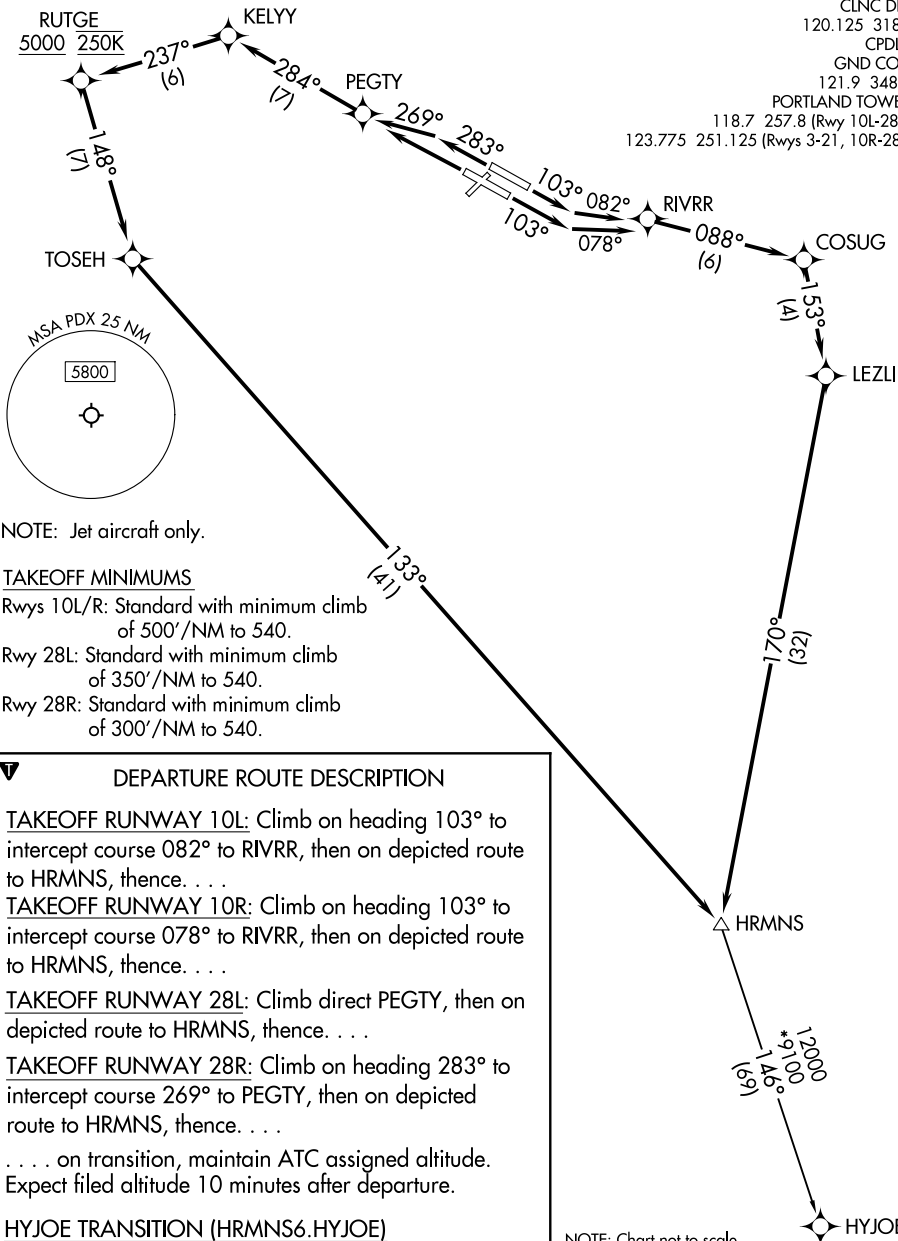
AL-330 (FAA)

PORTLAND INTL (PDX)
PORTLAND, OREGON

RNAV 1 - DME/DME/IRU or GPS.
RADAR required for non-GPS equipped aircraft.

**TOP ALTITUDE:
ASSIGNED BY ATC**

PORTLAND DEP CON
118.1 284.6
D-ATIS
128.35 269.9
CLNC DEL
120.125 318.1
CPDLC
GND CON
121.9 348.6
PORTLAND TOWER
118.7 257.8 (Rwy 10L-28R)
123.775 251.125 (Rwys 3-21, 10R-28L)



NOTE: Jet aircraft only.

TAKEOFF MINIMUMS

- Rwys 10L/R: Standard with minimum climb of 500'/NM to 540.
- Rwy 28L: Standard with minimum climb of 350'/NM to 540.
- Rwy 28R: Standard with minimum climb of 300'/NM to 540.

DEPARTURE ROUTE DESCRIPTION

TAKEOFF RUNWAY 10L: Climb on heading 103° to intercept course 082° to RIVRR, then on depicted route to HRMNS, thence. . . .

TAKEOFF RUNWAY 10R: Climb on heading 103° to intercept course 078° to RIVRR, then on depicted route to HRMNS, thence. . . .

TAKEOFF RUNWAY 28L: Climb direct PEGTY, then on depicted route to HRMNS, thence. . . .

TAKEOFF RUNWAY 28R: Climb on heading 283° to intercept course 269° to PEGTY, then on depicted route to HRMNS, thence. . . .

. . . . on transition, maintain ATC assigned altitude.
Expect filed altitude 10 minutes after departure.

HYJOE TRANSITION (HRMNS6.HYJOE)

NOTE: Chart not to scale.

NW-1, 16 APR 2026 to 14 MAY 2026

NW-1, 16 APR 2026 to 14 MAY 2026

HRMNS SIX DEPARTURE (RNAV)

(HRMNS6.HRMNS) 31OCT24

PORTLAND, OREGON
PORTLAND INTL (PDX)