

HI-TACAN RWY 10R

TACAN CBU Chan 29	APCH CRS 111°	Rwy ldg 11,000 TDZE 24 Arpt Elev 31
-----------------------------	-------------------------	--

[USAF]

PORTLAND INTL (KPDX)

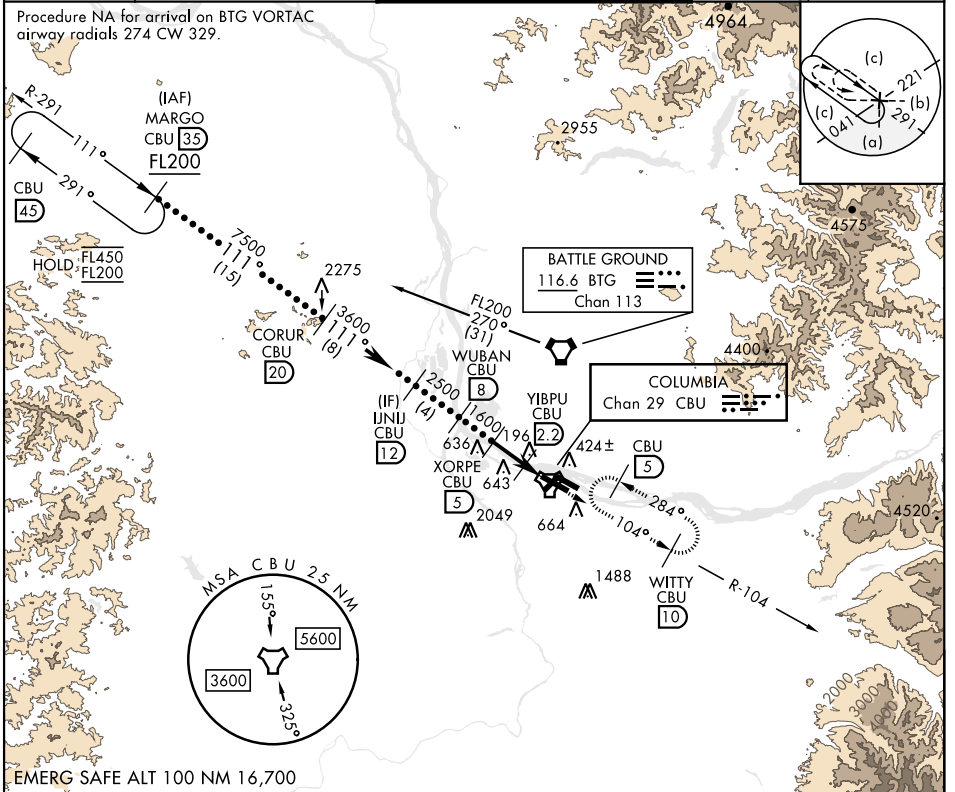
▼ * When ALS inop, increase CAT E vis to 1 1/4 miles.



MISSED APPROACH: Climb to 4000 on CBU TACAN R-104 to WITTY/CBU 10 DME and hold, continue climb-in-hold to 4000.

ATIS 128.35 269.9	APP CON 118.1 284.6 (100°-279°) 124.35 299.2 (280°-099°)	TOWER 118.7 257.8 Rwy 10L-28R 123.775 251.125 Rwy 3-21, 10R-28L	GND CON 121.9 348.6	CLNC DEL 120.125 318.1
-----------------------------	--	---	-------------------------------	----------------------------------

Procedure NA for arrival on BTG VORTAC airway radials 274 CW 329.



NW-1, 16 APR 2026 to 14 MAY 2026

NW-1, 16 APR 2026 to 14 MAY 2026

EMERG SAFE ALT 100 NM 16,700

<p>VGSI and ILS glidepath not coincident (VGSI Angle 3.00/TCH 71)</p> <p>MARGO CBU 35 FL200 CORUR CBU 20 UNJU CBU 12 WUBAN CBU 8 XORPE CBU 5 YIBPU CBU 2.2 TACAN WITTY CBU 10</p> <p>3.21° TCH 71</p> <p>4000 CBU R-104</p> <p>4.4 NM</p>	ELEV 31		TDZE 24
	Rwy 10L ldg 8535'		Rwy 28R ldg 9290'
CATEGORY	C	D	E
S-10R *	460/40	436	(500-34)
CIRCLING	1020-3	989 (1000-3)	1140-3 1109 (1200-3)
<p>REIL Rwy 3, 21 TDZL/CL Rwy 10R MIRL Rwy 3-21 HIRL Rwy 10L-28R, 28L-10R</p>			

HI-TACAN RWY 10R