

LOC/DME I-PDX 110.5 Chan 42	APP CRS 103°	Rwy Ldg 11000 TDZE 24 Apt Elev 31
--	------------------------	--

ILS RWY 10R (SA CAT I)

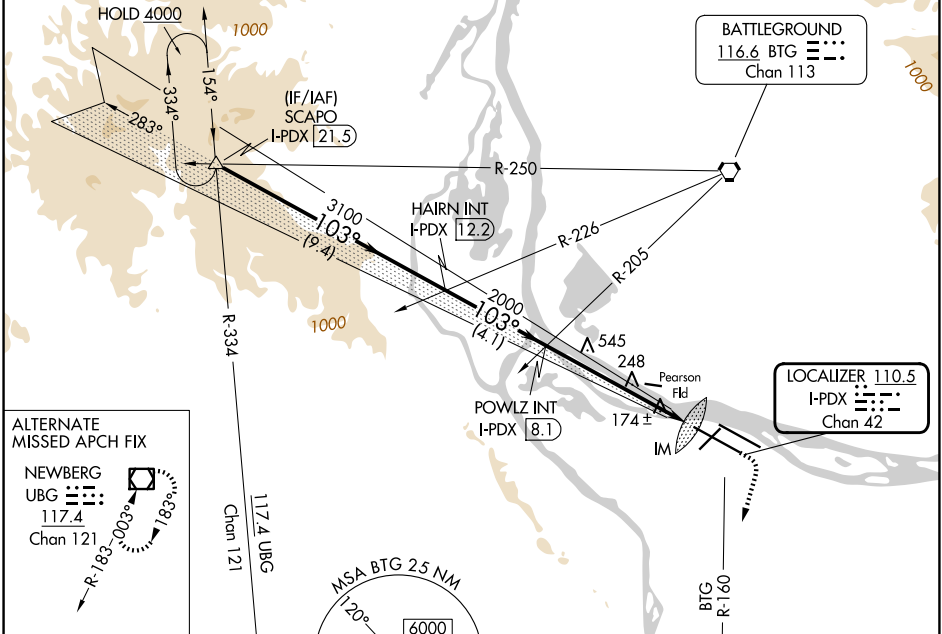
PORTLAND INTL (PDX)

Simultaneous approach authorized.
Requires specific OPSPEC, MSPEC, or LOA approval and use of HUD to DH.

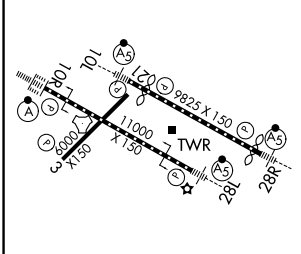
ALSIF-2

MISSED APPROACH: Climb to 1100 then climbing right turn to 5000 on BTG VORTAC R-160 to MULES/BTG 17.7 DME and hold, continue climb-in-hold to 5000.

D-ATIS 128.35 269.9	PORTLAND APP CON 124.35 299.2	PORTLAND TOWER 118.7 257.8 (10L-28R) 123.775 251.125 (3-21, 10R-28L)	GND CON 121.9 348.6
-------------------------------	---	--	-------------------------------



ELEV 31	D	TDZE 24
---------	----------	---------



VGSI and ILS glidepath not coincident (VGSI Angle 3.00/TCH 71).		1100	5000	MULES
SCAPO I-PDX [21.5]	HAIRN INT I-PDX [12.2]	POWLZ INT I-PDX [8.1]	BTG R-160	△
4000	3100	2000	IM	
GS 3.00° TCH 53	9.4 NM	4.1 NM	6 NM	1049'
CATEGORY	A	B	C	D
S-ILS 10R	RA 157/14 150 DA 174			

REIL Rwy 3 and 21
TDZL/RCLS Rwy 10R
MIRL Rwy 3-21
HIRL Rwy 10L-28R and 10R-28L

SA CATEGORY I ILS-SPECIAL AIRCREW & AIRCRAFT CERTIFICATION REQUIRED

NW-1, 16 APR 2026 to 14 MAY 2026

NW-1, 16 APR 2026 to 14 MAY 2026