

(KRATR.KRATR3) 26078

KRATR THREE ARRIVAL (RNAV)

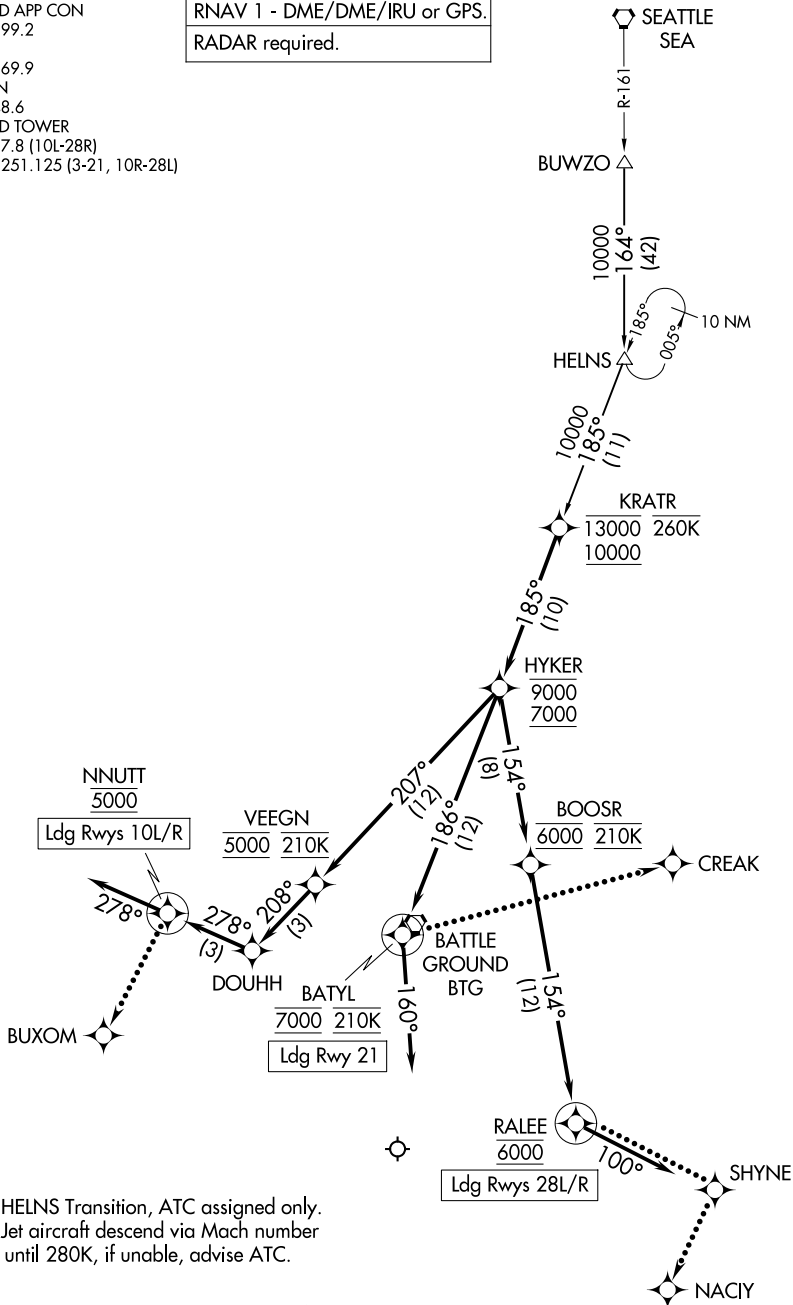
AL-330 (FAA)

PORTLAND INTL (PDX)
PORTLAND, OREGON

PORTLAND APP CON
124.35 299.2
D-ATIS
128.35 269.9
GND CON
121.9 348.6
PORTLAND TOWER
118.7 257.8 (10L-28R)
123.775 251.125 (3-21, 10R-28L)

RNAV 1 - DME/DME/IRU or GPS.

RADAR required.



NOTE: HELNS Transition, ATC assigned only.
NOTE: Jet aircraft descend via Mach number until 280K, if unable, advise ATC.

(CONTINUED ON FOLLOWING PAGE)

NOTE: Chart not to scale.

KRATR THREE ARRIVAL (RNAV)

(KRATR.KRATR3) 19MAR26

PORTLAND, OREGON
PORTLAND INTL (PDX)

NW-1, 16 APR 2026 to 14 MAY 2026

NW-1, 16 APR 2026 to 14 MAY 2026

ARRIVAL ROUTE DESCRIPTION

BUWZO TRANSITION (BUWZO.KRATR3)

HELNS TRANSITION (HELNS.KRATR3)

From KRATR on track 185° to cross HYKER between 7000 and 9000.

LANDING RUNWAYS 10L/R: From HYKER on track 207° to cross VEEGN at 5000 and at 210K, then on track 208° to DOUHH, then on track 278° to cross NNUTT at 5000, then on track 278°. Expect RADAR vectors to final approach course.

LANDING RUNWAY 21: From HYKER on track 186° to cross BATYL at 7000 and at 210K, then on track 160°. Expect RADAR vectors to final approach course.

LANDING RUNWAYS 28L/R: From HYKER on track 154° to cross BOOSR at 6000 and at 210K, then on track 154° to cross RALEE at 6000, then on track 100°. Expect RADAR vectors to final approach course.

LOST COMMUNICATIONS

Follow published crossing altitudes and then maintain lowest Rwy transitional altitude until established on approach procedure.

RUNWAYS 10L/R: At NNUTT, turn left direct to BUXOM and proceed on ILS or LOC RWY 10L approach.

RUNWAY 21: At BATYL, turn left direct to CREAK and proceed on LOC/DME RWY 21 approach.

RUNWAYS 28L/R: At RALEE, turn left direct to SHYNE, then turn right direct to NACIY and proceed on ILS or LOC RWY 28R approach.

NW-1, 16 APR 2026 to 14 MAY 2026

NW-1, 16 APR 2026 to 14 MAY 2026