


APP CRS 283°	Rwy Ldg TDZE Apt Elev	9290 31 31
------------------------	-----------------------------	---------------------------------------

RNAV (RNP) Y RWY 28R

PORTLAND INTL (PDX)

▼ For uncompensated Baro-VNAV systems, procedure NA below -7°C (20°F) or above 54°C (130°F). For inop MALSR, increase RNP 0.20 all Cats visibility to 1 1/4 mile, and increase RNP 0.30 all Cats visibility to 1 3/8 mile. RF required. GPS required. Use of FD or AP providing RNAV track guidance required during simultaneous operations. Simultaneous approach authorized with Rwy 28L.

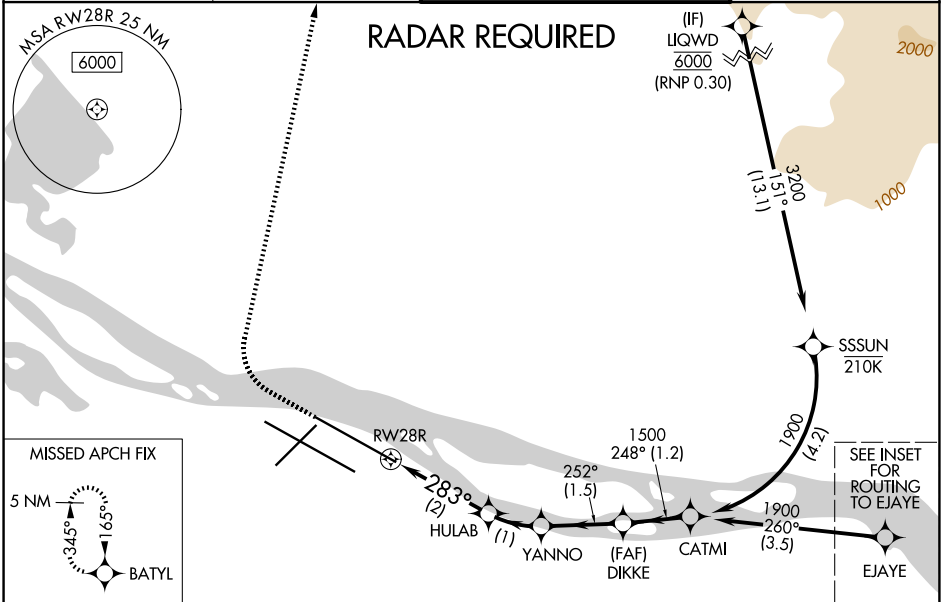
MALSR

MISSED APPROACH:
 Climb to 600 then climbing right turn to 4400 direct BATYL and hold, continue climb-in-hold to 4400.

D-ATIS
128.35 269.9

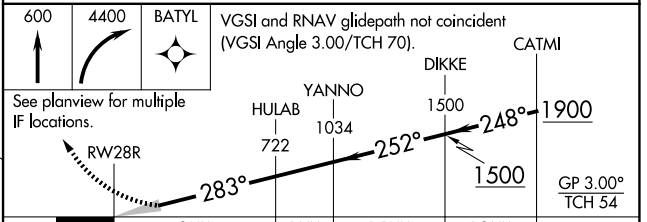
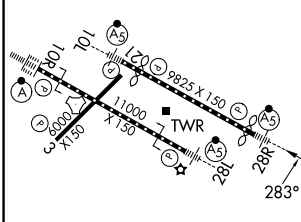
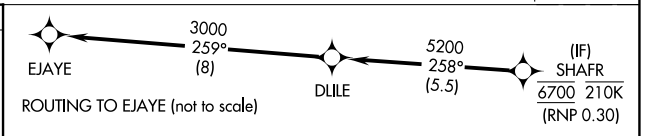
PORTLAND APP CON
124.35 299.2

PORTLAND TOWER
118.7 257.8 (10L-28R)
123.775 251.125 (3-21, 10R-28L)

GND CON
121.9 348.6



ELEV 31 **D** TDZE 31



CATEGORY	A	B	C	D
RNP 0.20 DA		403/40	372 (400-3/4)	
RNP 0.30 DA		455/50	424 (500-1)	

AUTHORIZATION REQUIRED

NW-1, 16 APR 2026 to 14 MAY 2026

NW-1, 16 APR 2026 to 14 MAY 2026