

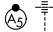
APP CRS	Rwy Ldg	<b>11000</b>
<b>283°</b>	TDZE	<b>23</b>
	Apt Elev	<b>31</b>

# RNAV (RNP) Z RWY 28L

PORTLAND INTL (PDX)

RNP AR APCH - GPS. Authorization required. From DSHUT: RF.

▼ For uncompensated Baro-VNAV systems, procedure NA below -5°C or above 54°C. Simultaneous approach authorized.

MALSR 

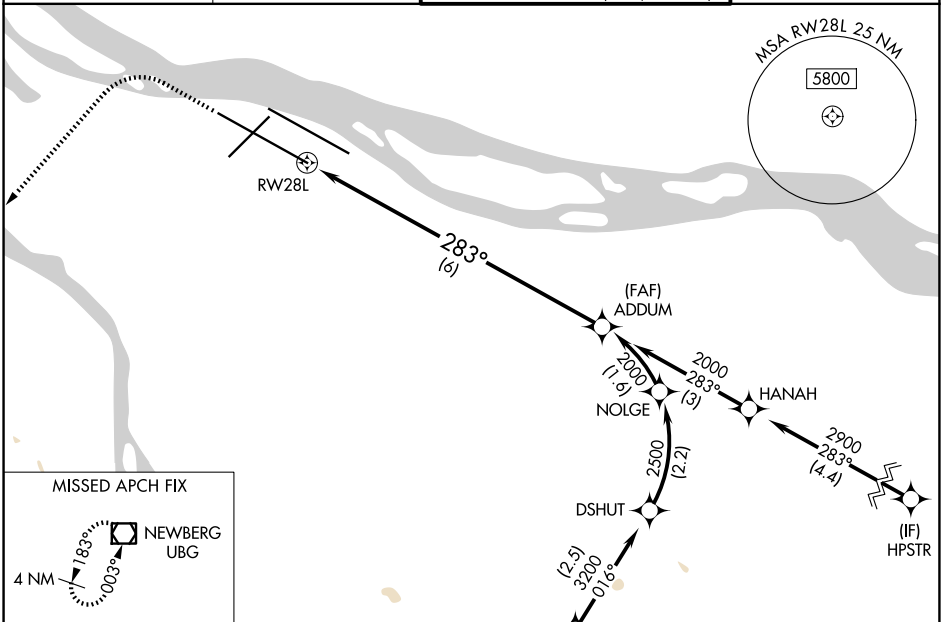
MISSED APPROACH: Climb to 2100 then climbing left turn to 4000 direct UBG VOR/DME and hold.

D-ATIS  
**128.35 269.9**

PORTLAND APP CON  
**124.35 299.2**

PORTLAND TOWER  
**118.7 257.8 (10L-28R)**  
**123.775 251.125 (3-21, 10R-28L)**

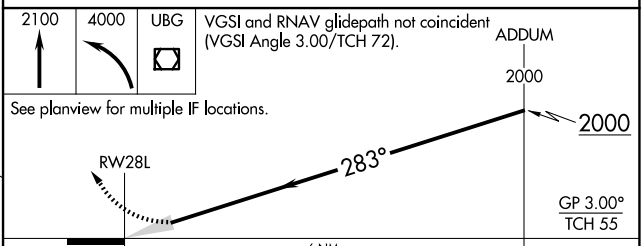
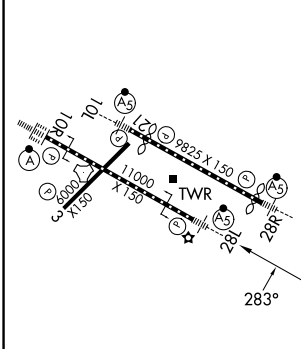
GND CON  
**121.9 348.6**



NW-1, 16 APR 2026 to 14 MAY 2026

NW-1, 16 APR 2026 to 14 MAY 2026

ELEV 31	<b>D</b>	TDZE 23
---------	----------	---------



CATEGORY	A	B	C	D
RNP 0.30 DA	399/60 376 (400-1¼)			

**AUTHORIZATION REQUIRED**