

WAAS CH <b>40004</b> W10A	APP CRS <b>103°</b>	Rwy Ldg <b>11000</b> TDZE <b>24</b> Apt Elev <b>31</b>
---------------------------------	------------------------	--

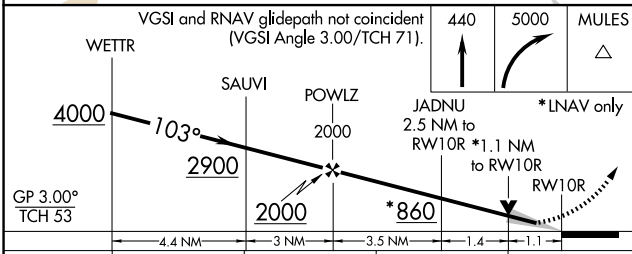
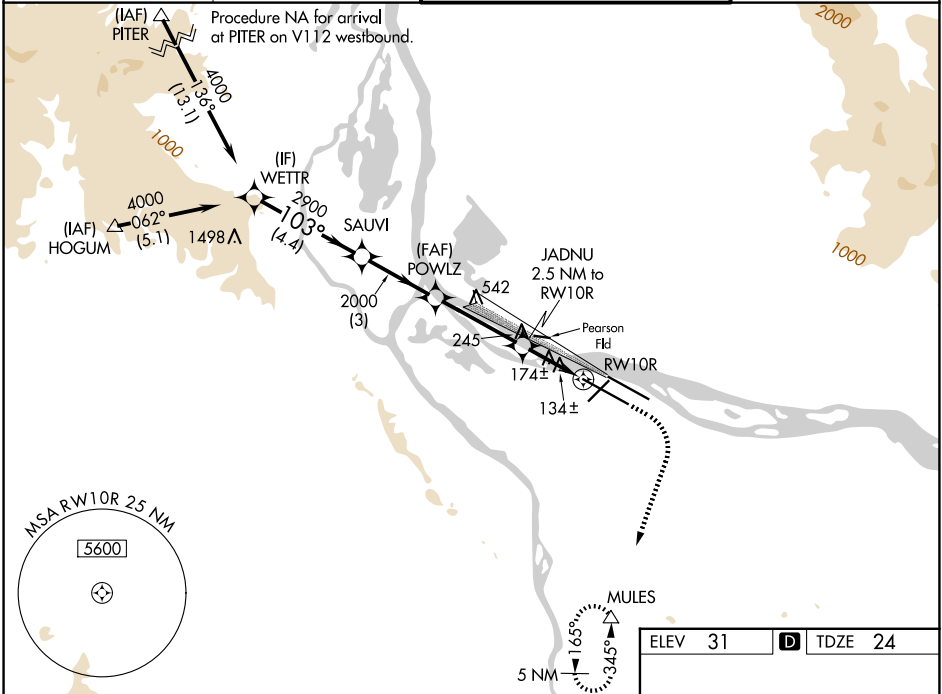
# RNAV (GPS) Y RWY 10R

PORTLAND INTL (PDX)

**⚠** For uncompensated Baro-VNAV systems, LNAV/VNAV NA below -1.5°C (5°F) or above 54°C (130°F). DME/DME RNP-0.3 NA. Simultaneous approach authorized with Rwy 10L. Use of FD or AP providing RNAV track guidance required during simultaneous operations. LNAV procedure NA during simultaneous operations.

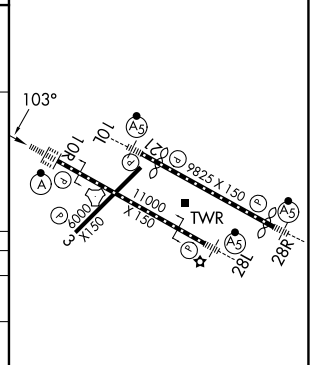
ALSF-2  
**(A)**  
MISSED APPROACH: Climb to 440 then climbing right turn to 5000 direct MULES and hold.

D-ATIS <b>128.35 269.9</b>	PORTLAND APP CON <b>124.35 299.2</b>	PORTLAND TOWER <b>118.7 257.8 (10L-28R)</b> <b>123.775 251.125 (3-21, 10R-28L)</b>	GND CON <b>121.9 348.6</b>
-------------------------------	---	--	-------------------------------



ELEV 31	<b>D</b> TDZE 24
---------	------------------

CATEGORY	A	B	C	D
LPV DA		224/18	200 (200-½)	
LNAV/VNAV DA		329/24	305 (300-½)	
LNAV MDA	440/24	416 (500-½)	440/40	416 (500-¾)
CIRCLING	720-1 689 (700-1)	760-1 729 (800-1)	1060-3	1029 (1100-3)



REIL Rwy 3 and 21  
TDZL/RCLS Rwy 10R  
MIRL Rwy 3-21  
HIRL Rwy 10L-28R and 10R-28L

NW-1, 16 APR 2026 to 14 MAY 2026

NW-1, 16 APR 2026 to 14 MAY 2026