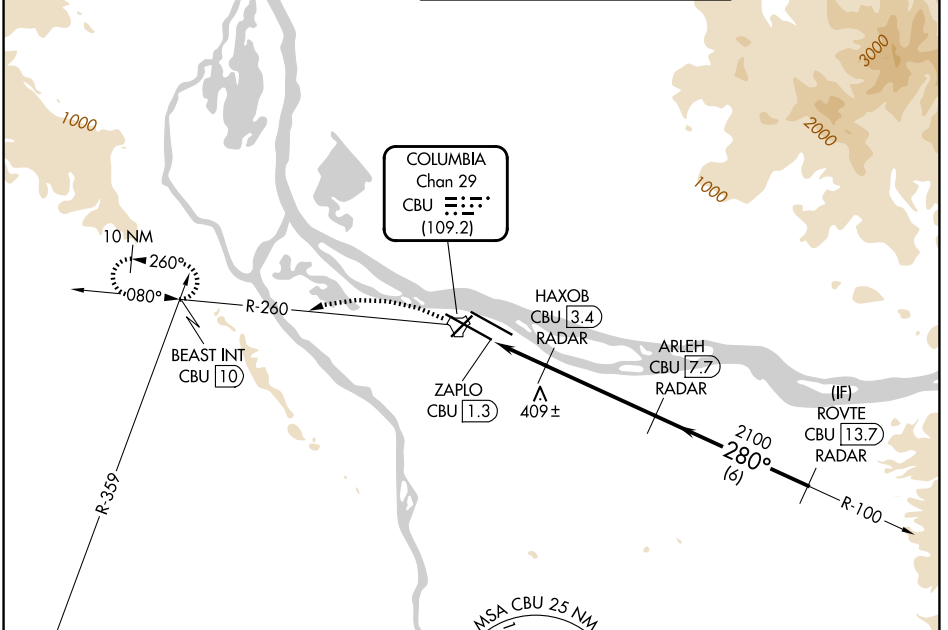


TACAN CBU Chan <b>29</b> <b>(109.2)</b>	APP CRS <b>280°</b>	Rwy Ldg <b>11000</b> TDZE <b>23</b> Apt Elev <b>31</b>
---	------------------------	--

# TACAN RWY 28L

PORTLAND INTL (PDX)

RADAR required for procedure entry.		MALSR	MISSED APPROACH: Climbing left turn to 4000 on CBU TACAN R-260 to BEAST INT/ CBU 10 DME and hold, continue climb-in-hold to 4000.
For inop ALS, increase S-28L Cat C/D/E visibility to 1 3/4 SM.			
D-ATIS <b>128.35 269.9</b>	PORTLAND APP CON <b>124.35 299.2</b>	PORTLAND TOWER <b>118.7 257.8</b> (10L-28R) <b>123.775 251.125</b> (3-21, 10R-28L)	GND CON <b>121.9 348.6</b>



NW-1, 16 APR 2026 to 14 MAY 2026

NW-1, 16 APR 2026 to 14 MAY 2026

