


LOC/DME I-ARJ 109.3 Chan 30	APP CRS 227°	Rwy Ldg 8700 TDZE 50 Apt Elev 54
--	------------------------	---

ILS RWY 23 (SA CAT I & II)

RHODE ISLAND TF GREEN INTL (PVD)

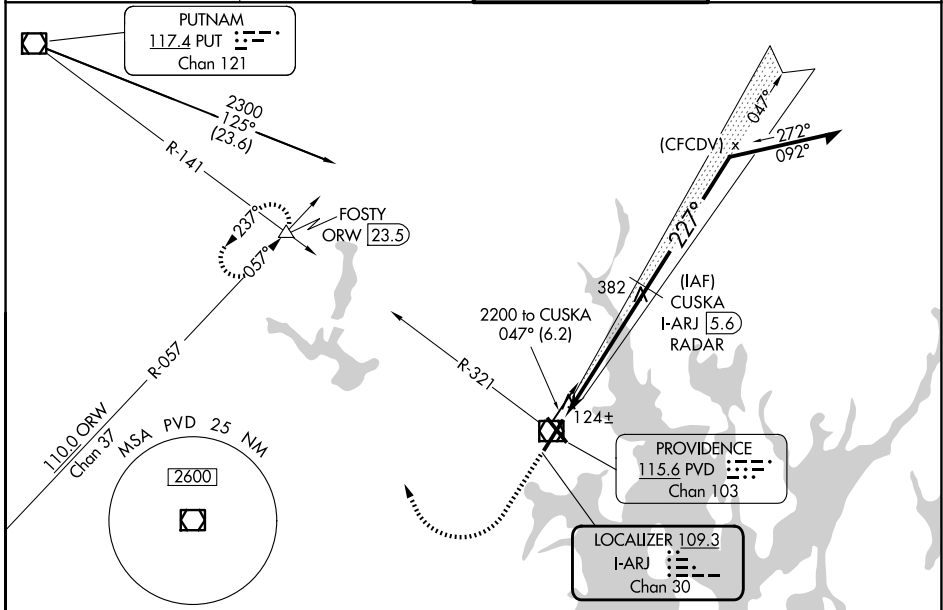
DME or RADAR required for procedure entry.

SA Cat I: Requires specific OPSPEC, MSPEC, or LOA approval and use of HUD to DH.
SA CAT II: Reduced Lighting: Requires specific OPSPEC, MSPEC, or LOA approval and use of Autoland or HUD to touchdown.
Procedure NA when tower closed.

MALSR 

MISSED APPROACH: Climb to 700 then climbing right turn to 2500 on heading 350° and PVD VOR/DME R-321 to FOSTY INT/ ORW 23.5 DME and hold.

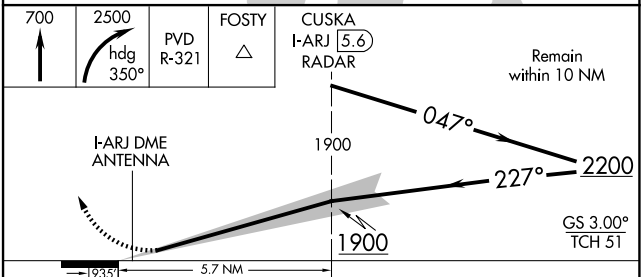
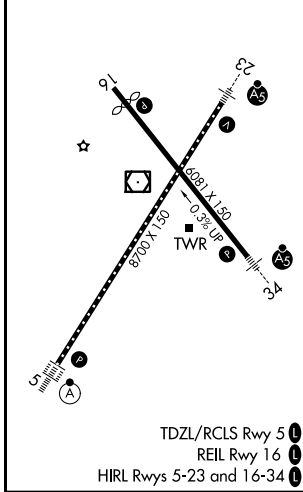
D-ATIS 124.2	PROVIDENCE APP CON * 123.675 244.875	PROVIDENCE TOWER * 120.7 (CTAF) 257.8	GND CON 121.9 348.6
------------------------	--	---	-------------------------------



NE-1, 16 APR 2026 to 14 MAY 2026

NE-1, 16 APR 2026 to 14 MAY 2026

ELEV 54	D	TDZE 50
---------	----------	---------



CATEGORY	A	B	C	D
S-ILS 23	SA CAT I	RA 163/14	150 DA 200	
S-ILS 23	SA CAT II	RA 103/12	100 DA 150	

SA CATEGORY I & II ILS - SPECIAL AIRCREW & AIRCRAFT CERTIFICATION REQUIRED