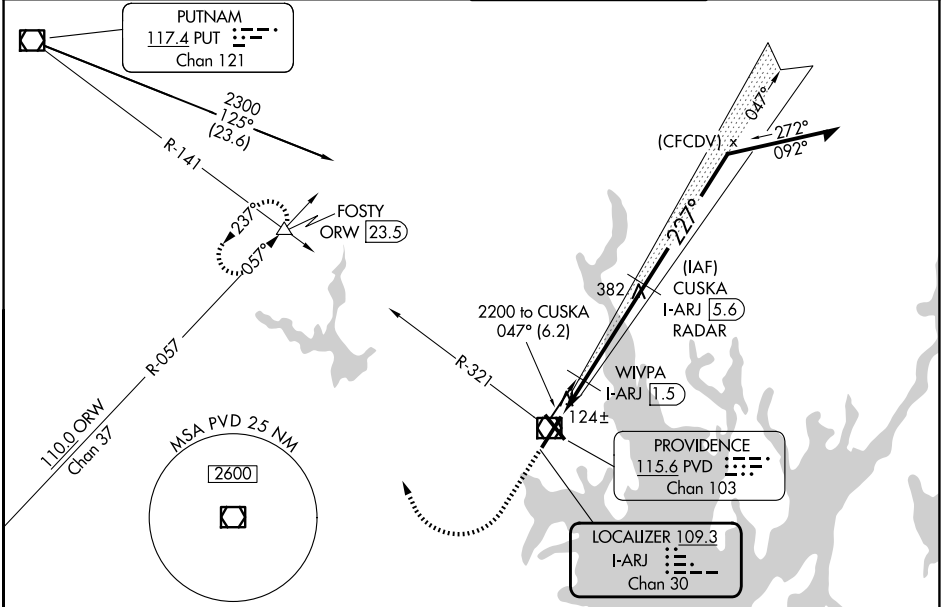


LOC/DME I-ARJ <b>109.3</b> Chan 30	APP CRS <b>227°</b>	Rwy Ldg <b>8700</b> TDZE <b>50</b> Apt Elev <b>54</b>
--	------------------------	---

# ILS or LOC RWY 23

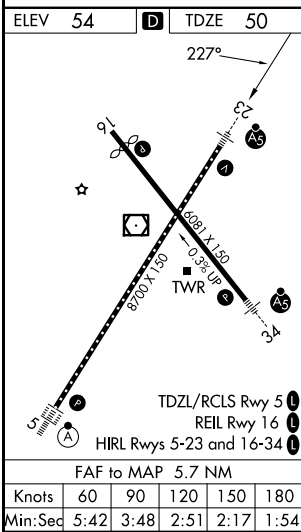
RHODE ISLAND TF GREEN INTL (PVD)

DME or RADAR required for procedure entry.		MALSR	MISSED APPROACH: Climb to 700 then climbing right turn to 2500 on heading 350° and PVD VOR/DME R-321 to FOSTY INT/ORW 23.5 DME and hold.
<b>**RVR 1800 authorized with use of FD or AP or HUD to DA.</b>			
D-ATIS <b>124.2</b>	PROVIDENCE APP CON * <b>123.675 244.875</b>	PROVIDENCE TOWER * <b>120.7 (CTAF) 0 257.8</b>	GND CON <b>121.9 348.6</b>



NE-1, 16 APR 2026 to 14 MAY 2026

NE-1, 16 APR 2026 to 14 MAY 2026



ELEV 54	TDZE 50	700	2500	PVD R-321	FOSTY	VGSI and ILS glidepath not coincident (VGSI Angle 3.00/TCH 41).	Remain within 10 NM
		* LOC only.				CUSKA I-ARJ 5.6 RADAR	
		* I-ARJ 0.1		* I-ARJ 0.8		WIVPA I-ARJ 1.5	GS 3.00° TCH 51
		0.9 NM		0.7		4.1 NM	
CATEGORY	A	B	C	D			
S-ILS 23**	250/24 200 (200-1/2)						
S-LOC 23	600/24	550 (600-1/2)	600/60	550 (600-1 1/4)			
CIRCLING	600-1 546 (600-1)	640-1 586 (600-1)	640-1 1/8 586 (600-1 1/8)	860-2 1/2 806 (900-2 1/2)			
WIVPA FIX MINIMUMS							
S-LOC 23	380/24	330 (400-1/2)	380/26	330 (400-1/2)			
CIRCLING	560-1 506 (600-1)	640-1 586 (600-1)	640-1 1/2 586 (600-1 1/2)	860-2 1/2 806 (900-2 1/2)			