


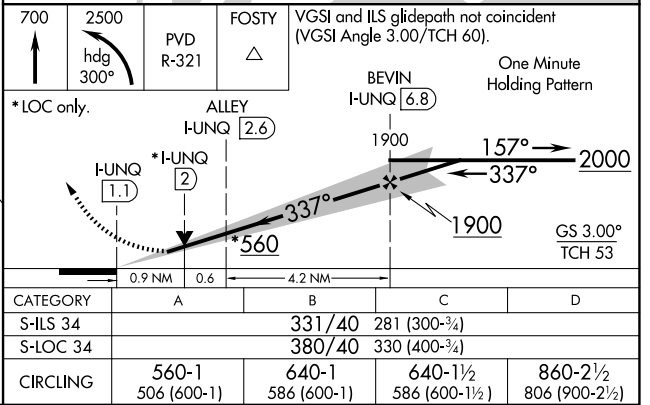
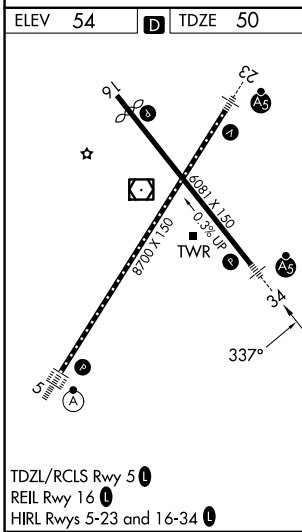
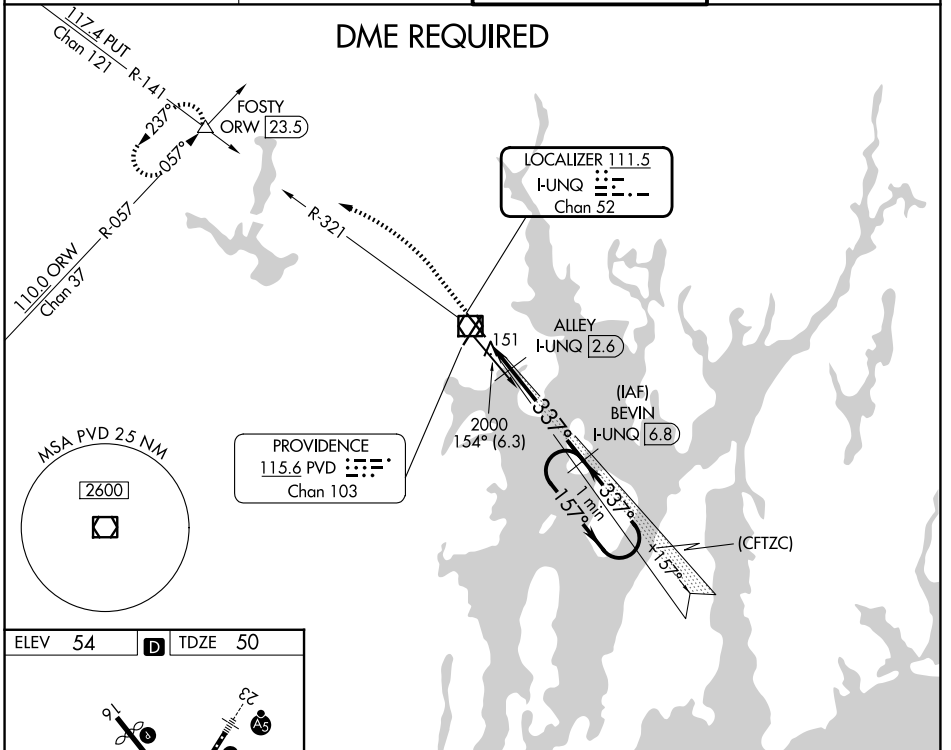
LOC/DME I-UNQ 111.5 Chan 52	APP CRS 337°	Rwy Ldg 6081 TDZE 50 Apt Elev 54
-------------------------------------------------	------------------------	-------------------------------------------------------------

ILS or LOC RWY 34

RHODE ISLAND TF GREEN INTL (PVD)

<p>⚠ DME required. Rwy 34 helicopter visibility reduction below RVR 4000 NA. For inop MALSRS, increase S-LOC Cat A/B visibility to RVR 5500, and Cat C/D visibility to RVR 5000. Autopilot coupled approach NA below 300.</p>		<p>MALSRS </p> <p>MISSED APPROACH: Climb to 700 then climbing left turn to 2500 on heading 300° and on PVD VOR/DME R-321 to FOSTY INT/ORW 23.5 DME and hold.</p>	
D-ATIS 124.2	PROVIDENCE APP CON ★ 123.675 244.875	PROVIDENCE TOWER ★ 120.7 (CTAF) 257.8	GND CON 121.9 348.6

DME REQUIRED



NE-1, 16 APR 2026 to 14 MAY 2026

NE-1, 16 APR 2026 to 14 MAY 2026