

WAAS CH <b>86218</b> <b>W05A</b>	APP CRS <b>047°</b>	Rwy Ldg TDZE Apt Elev	<b>8700</b> <b>53</b> <b>54</b>
--	------------------------	-----------------------------	---------------------------------------

# RNAV (GPS) RWY 5

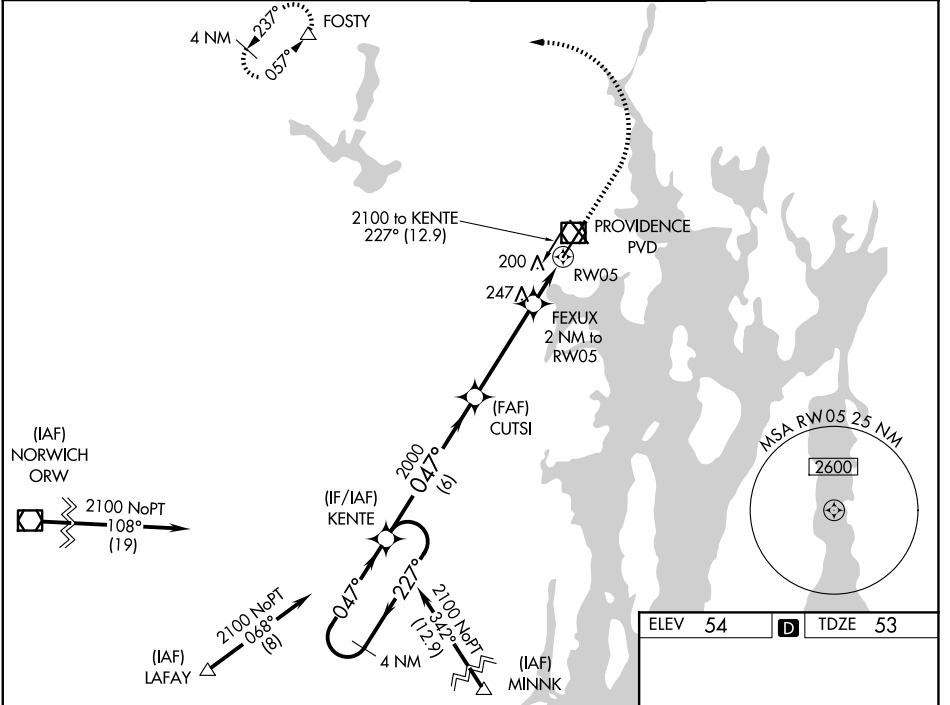
RHODE ISLAND TF GREEN INTL (PVD)

⚠ For uncompensated Baro-VNAV systems, LNAV/VNAV NA below -16°C (3°F) or above 54°C (130°F). DME/DME RNP-0.3 NA. When tower closed: increase LPV, LNAV/VNAV all Cats and LNAV Cats A and B visibilities to ¾ SM, and LNAV Cats C and D visibility to 1 SM. When control tower closed: For inop ALS, increase LNAV Cats C and D visibility to 1 ¾ SM.

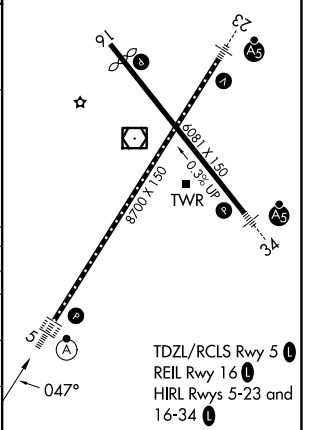
ALSF-2

MISSED APPROACH: Climb to 800 then climbing left turn to 2500 direct FOSTY and hold.

D-ATIS <b>124.2</b>	PROVIDENCE APP CON * <b>123.675 244.875</b>	PROVIDENCE TOWER * <b>120.7 (CTAF) 0 257.8</b>	GND CON <b>121.9 348.6</b>
------------------------	--	---	-------------------------------



4 NM Holding Pattern	KENTE	CUTSI	FEXUX 2 NM to RW05 *1.1 NM to RW05	FOSTY
2100 ← 227°	← 047°	2000	*740	800
GP 3.00° TCH 53	6 NM	4 NM	0.9	1.1
CATEGORY	A	B	C	D
LPV DA		253/18	200 (200-½)	
LNAV/VNAV DA		361/24	308 (400-½)	
LNAV MDA	460/24	407 (500-½)	460/40	407 (500-¾)
CIRCLING	560-1 506 (600-1)	640-1 586 (600-1)	640-1½ 586 (600-1½)	860-2½ 806 (900-2½)



NE-1, 16 APR 2026 to 14 MAY 2026

NE-1, 16 APR 2026 to 14 MAY 2026