


APP CRS	Rwy Ldg	<b>8700</b>
<b>227°</b>	TDZE	<b>50</b>
	Apt Elev	<b>55</b>

# RNAV (RNP) Z RWY 23

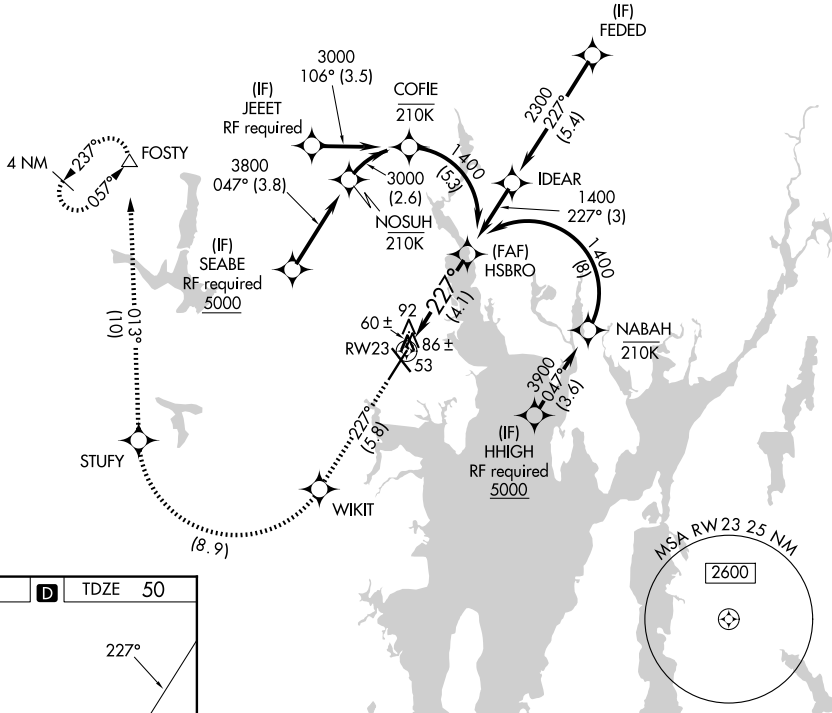
RHODE ISLAND TF GREEN INTL (PVD)

**▼** For uncompensated Baro-VNAV systems, procedure NA below -15°C (5°F) or above 48°C (118°F). RF required. For inop MALSR, increase RNP 0.30 all Cats visibility to 1¼. GPS Required.

**MALSR**  
  
 Climb to 2500 on track 227° to WIKIT and right turn to STUFY and on track 013° to FOSTY and hold.

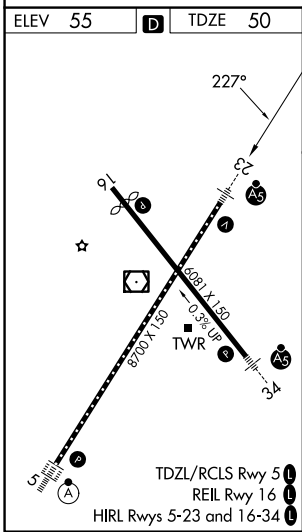
D-ATIS <b>124.2</b>	PROVIDENCE APP CON ★ <b>123.675 244.875</b>	PROVIDENCE TOWER ★ <b>120.7 (CTAF) 257.8</b>	GND CON <b>121.9 348.6</b>
------------------------	--	---	-------------------------------




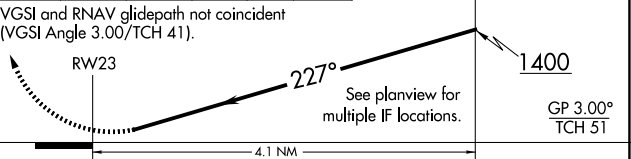
## RADAR REQUIRED



NE-1, 16 APR 2026 to 14 MAY 2026

NE-1, 16 APR 2026 to 14 MAY 2026



2500	WIKIT	STUFY	tr 013°	FOSTY	HSBRO
tr 227°					1400
VGSI and RNAV glidepath not coincident (VGSI Angle 3.00/TCH 41).					
 <p>See planview for multiple IF locations.</p> <p>GP 3.00° TCH 51</p>					
CATEGORY	A	B	C	D	
RNP 0.30 DA	434/40 384 (400-¾)				
<b>AUTHORIZATION REQUIRED</b>					