

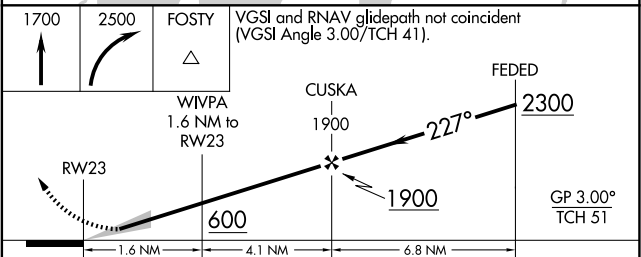
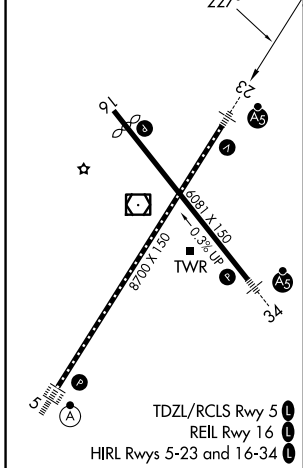
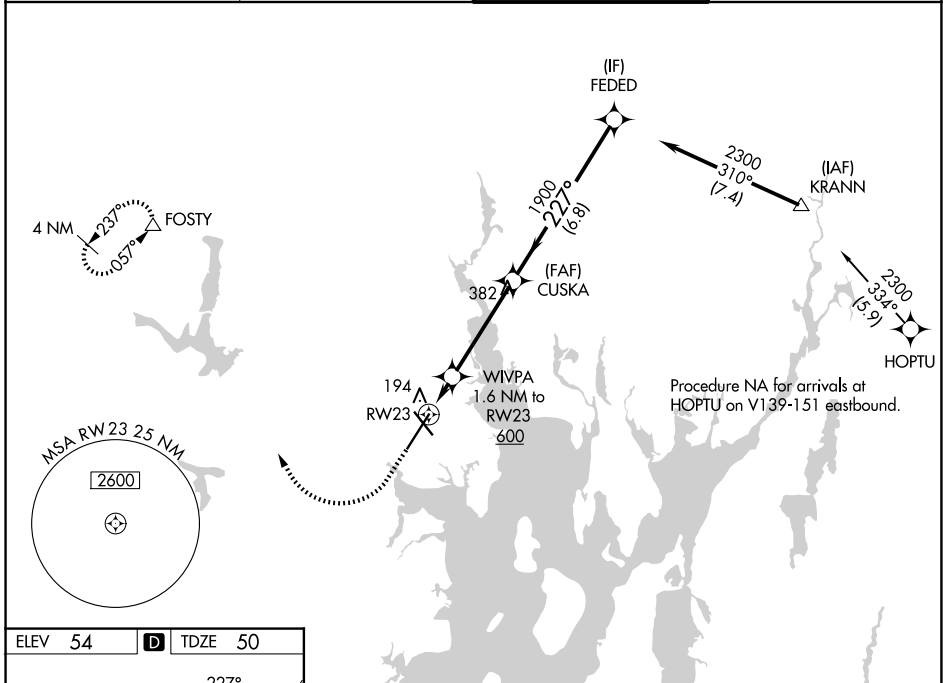
WAAS CH <b>93823</b> <b>W23A</b>	APP CRS <b>227°</b>	Rwy Ldg TDZE Apt Elev	<b>8700</b> <b>50</b> <b>54</b>
--	------------------------	-----------------------------	---------------------------------------

# RNAV (GPS) Y RWY 23

RHODE ISLAND TF GREEN INTL (PVD)

RNP APCH - GPS.	MALSR 	MISSED APPROACH: Climb to 1700 then climbing right turn to 2500 direct FOSTY and hold.
<p>▼ For uncompensated Baro-VNAV systems, LNAV/VNAV NA below -1.6°C or above 54°C. Inop ALS, increase LNAV Cats C/D visibility to RVR 6000. * RVR 1800 authorized with use of FD or AP or HUD to DA.</p>		

D-ATIS <b>124.2</b>	PROVIDENCE APP CON * <b>123.675 244.875</b>	PROVIDENCE TOWER * <b>120.7 (CTAF) 0 257.8</b>	GND CON <b>121.9 348.6</b>
------------------------	--	---	-------------------------------



	A	B	C	D
CATEGORY	A	B	C	D
LPV DA *		250/24	200 (200-½)	
LNAV/VNAV DA		355/24	305 (400-½)	
LNAV MDA	460/24	410 (500-½)	460/40	410 (500-¾)
CIRCLING	560-1	640-1	640-1½	860-2½
	506 (600-1)	586 (600-1)	586 (600-1½)	806 (900-2½)

NE-1, 16 APR 2026 to 14 MAY 2026

NE-1, 16 APR 2026 to 14 MAY 2026