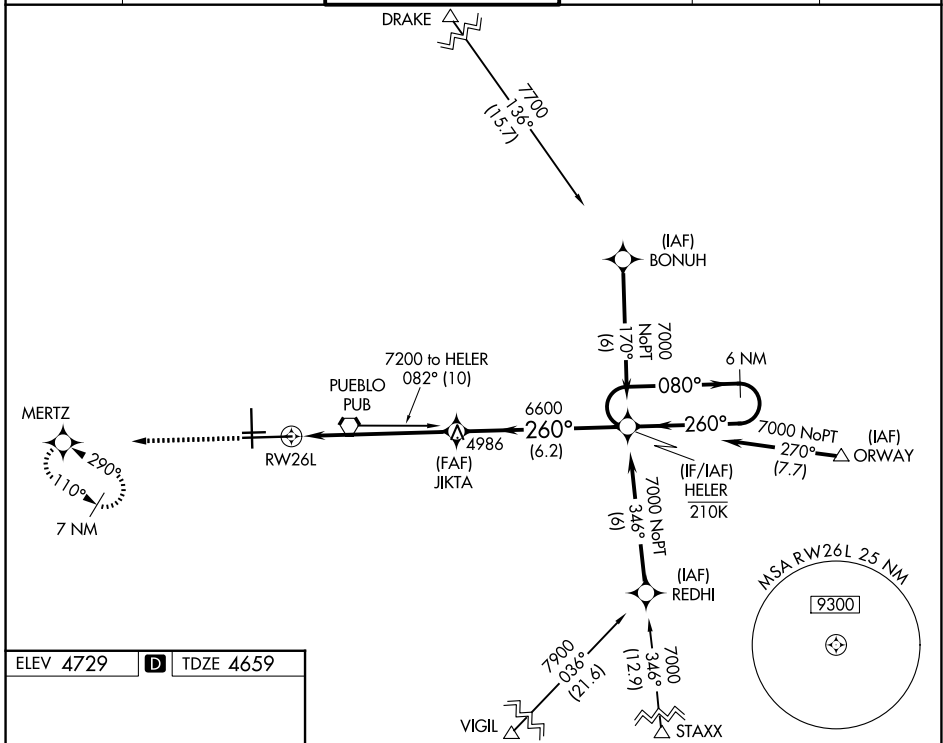


WAAS CH <b>53531</b> <b>W26A</b>	APP CRS <b>260°</b>	Rwy Ldg <b>10496</b> TDZE <b>4659</b> Apt Elev <b>4729</b>
----------------------------------------	------------------------	------------------------------------------------------------------

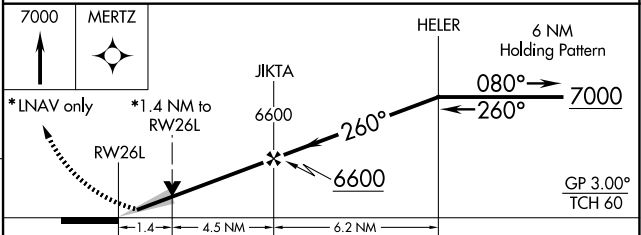
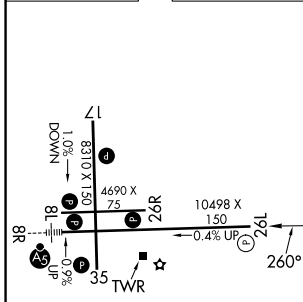
# RNAV (GPS) RWY 26L

PUEBLO MEML (PUB)

RNP APCH-GPS.			MISSED APPROACH: Climb to 7000 direct MERTZ and hold.		
<p><b>V</b> For uncompensated Baro-VNAV systems, LNAV/VNAV NA below -22°C or above 54°C.</p>					
ATIS <b>125.25</b>	DENVER APP CON ★ <b>120.1 290.5</b>	PUEBLO TOWER ★ <b>119.1 (CTAF) 0 257.8</b>	GND CON <b>121.9</b>	CLNC DEL <b>120.9</b>	UNICOM <b>122.95</b>



ELEV 4729	<b>D</b>	TDZE 4659
-----------	----------	-----------



CATEGORY	A	B	C	D
LPV DA	4859-3/4		200 (200-3/4)	
LNAV/VNAV DA	4979-1		320 (300-1)	
LNAV MDA	5100-1	441 (400-1)	5100-1 3/8	441 (400-1 3/8)
CIRCLING	5340-1	611 (700-1)	5580-2 1/2	5800-3
			851 (900-2 1/2)	1071 (1100-3)

HIRL Rwy 8R-26L  
MIRL Rwy 17-35 and 8L-26R  
REIL Rwy 8L, 17, 26L, 26R and 35

SW-1, 16 APR 2026 to 14 MAY 2026

SW-1, 16 APR 2026 to 14 MAY 2026