

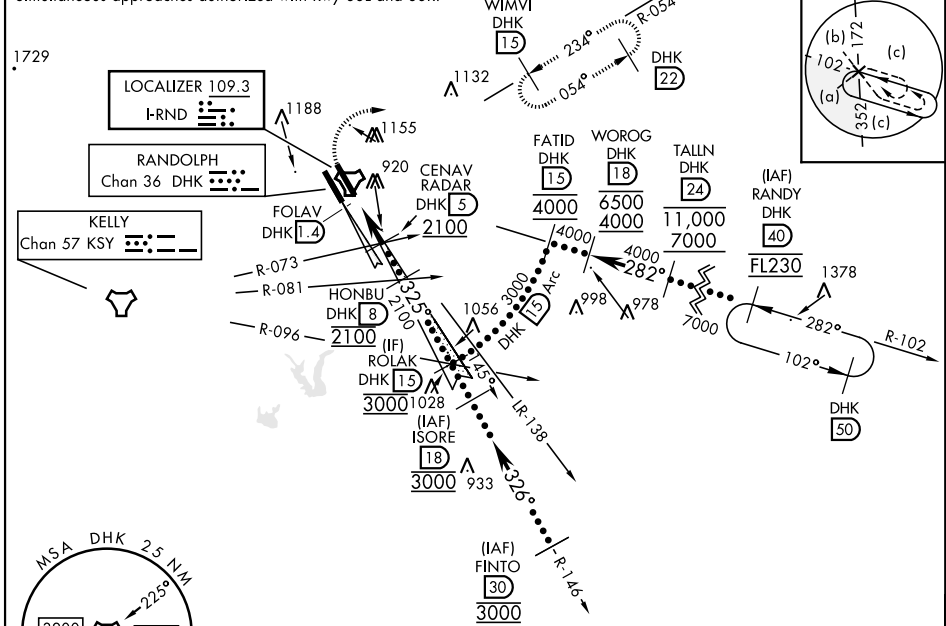
HI-ILS or LOC Z RWY 33R

LOC I-RND 109.3	APCH CRS 325°	Rwy ldg TDZE Arprt Elev 8351 734 761	[USAF]	RANDOLPH AFB (KRND)
---------------------------	-------------------------	--	--------	---------------------

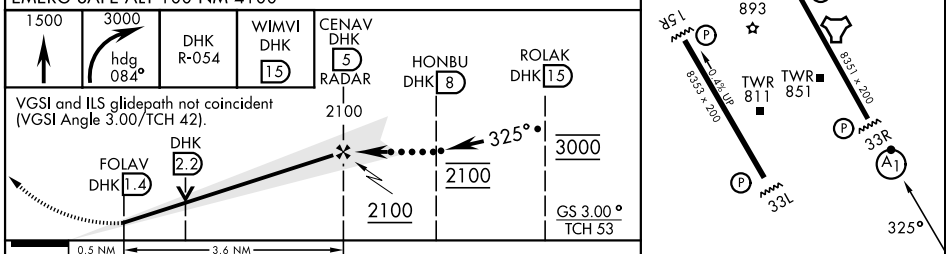
RADAR or DME required		ALSF-1 	MISSED APPROACH: Climb to 1500, then climbing right turn heading 084° to 3000, intercept DHK R-054 to WIMVI and hold.
-----------------------	--	------------	---

ATIS ★ 290.525	SAN ANTONIO APP CON 128.05 318.1	TOWER ★ 128.25 294.7	GND CON 119.65 275.8	HANGOVER ATIS ★ 327.8	HANGOVER TOWER ★ 120.5 291.1	HANGOVER GND CON 124.75 353.75
--------------------------	--	--------------------------------	--------------------------------	---------------------------------	--	--

Simultaneous approaches authorized with Rwy 33L and 33R.



ELEV 761	TDZE 734
----------	----------



CATEGORY	C	D	E
S-ILS 33R**	933/24	200	(200-½)
S-LOC 33R**	1180/45	447	(500-¾)
CIRCLING***	1260-1½ 499 (500-1½)	1900-3	1139 (1200-3)

HIRL all rwys					
ALS Rwy 15L nstd lnd 2100'					
FAF to MAP 3.6 NM					
Knots	120	140	160	180	200
Min:Sec	1:48	1:33	1:21	1:12	1:05

HI-ILS or LOC Z RWY 33R

SC-3, 16 APR 2026 to 14 MAY 2026

SC-3, 16 APR 2026 to 14 MAY 2026