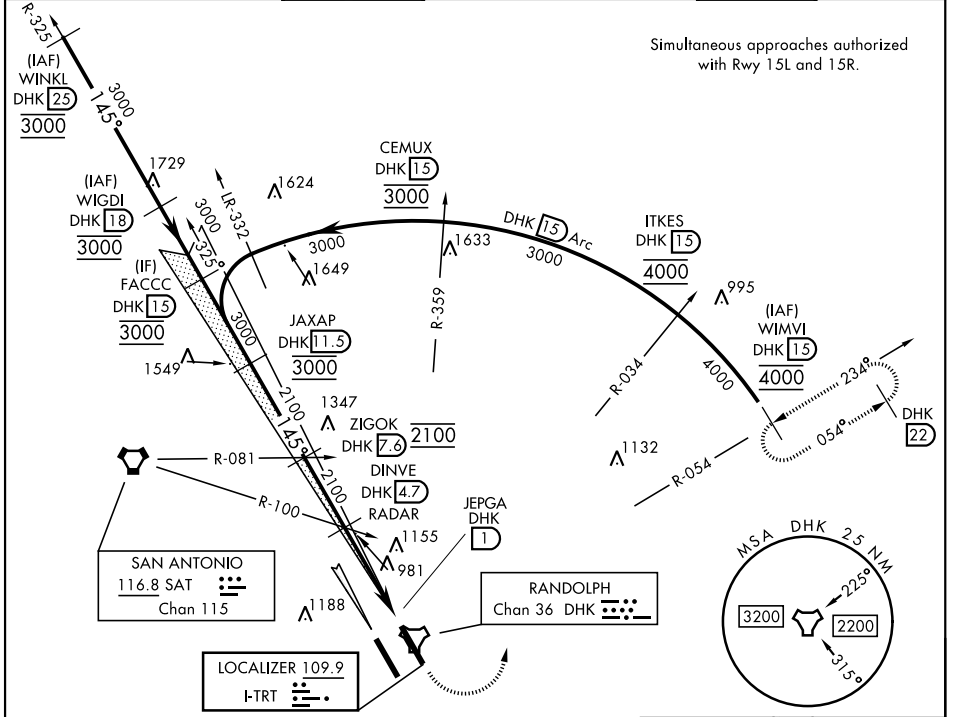


# ILS or LOC Y RWY 15L

LOC I-TRT <b>109.9</b>	APCH CRS <b>145°</b>	Rwy Idg TDZE Arpt Elev <b>8351</b> <b>742</b> <b>761</b>	[USAF]	RANDOLPH AFB (KRND)		
---------------------------	-------------------------	---	--------	---------------------	--	--

RADAR or DME required		ALSIF-1 		MISSED APPROACH: Climb to 1500, then climbing left turn heading 024° to 3000. Intercept DHK TACAN R-054 to WIMVI and hold.		
* When ALS inop, increase CAT AB RVR to 55, vis to 1 mile; CAT CDE to 1 1/2 miles.						
** Circling not authorized SW of Rwy 15L-33R.						
ATIS ★ <b>290.525</b>	SAN ANTONIO APP CON <b>128.05 318.1</b>	TOWER ★ <b>128.25 294.7</b>	GND CON <b>119.65 275.8</b>	HANGOVER ATIS ★ <b>327.8</b>	HANGOVER TOWER ★ <b>120.5 291.1</b>	HANGOVER GND CON <b>124.75 353.75</b>



Simultaneous approaches authorized with Rwy 15L and 15R.

SC-3, 16 APR 2026 to 14 MAY 2026

SC-3, 16 APR 2026 to 14 MAY 2026

EMERG SAFE ALT 100 NM 4100		ELEV 761	TDZE 742
FACCC DHK 15, JAXAP DHK 11.5, ZIGOK DHK 7.3, DINVE DHK 4.7, JEPGA DHK 1		VGS1 and ILS glidepath not coincident (VGS1 Angle 3.00/TCH 46)	
GS 3.00° TCH 41		1500, 3000, hdg 024°, DHK R-054, WIMVI DHK 15	
CATEGORY		A	B
S-ILS 15L		942/40	
S-LOC 15L *		1260/40	518 (500-3/4)
CIRCLING **		1260-1	499 (500-1)
		1260-1 1/2	499 (500-1 1/2)
		1900-3	1139 (1200-3)
HIRL all rwys		ALS Rwy 15L nstd len 2100'	
		FAF to MAP 3.7 NM	
Knots		60	90 120 150 180
Min:Sec		3:42	2:28 1:51 1:29 1:14

# ILS or LOC Y RWY 15L