

UNIVERSAL CITY, TEXAS

RNAV (GPS) RWY 33L

APCH CRS 325°	Rwy Idg TDZE Arprt Elev 8353 733 761
-------------------------	--

[USAF]

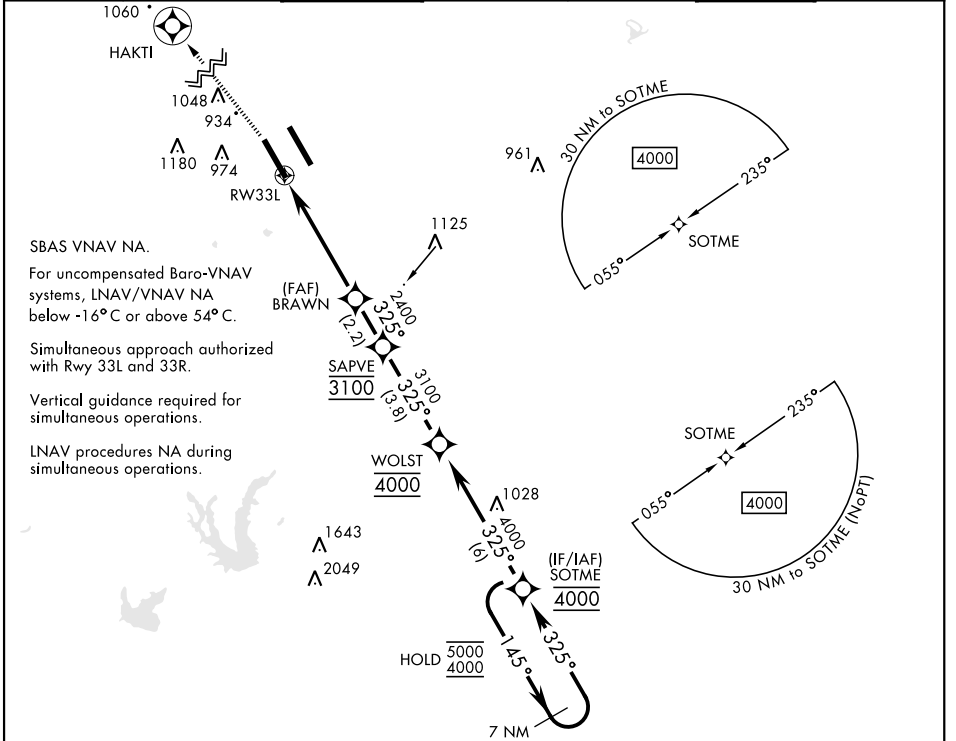
RANDOLPH AFB (KRND)

RNP APCH - GPS

* Circling not authorized NE of Rwy 15R-33L.

MISSED APPROACH: Climb to 1300, then climbing left turn to 3000 direct HAKTI. Expect ATC instructions.

ATIS ★ 290.525	SAN ANTONIO APP CON 128.05 318.1	TOWER ★ 128.25 294.7	GND CON 119.65 275.8	HANGOVER ATIS ★ 327.8	HANGOVER TOWER ★ 120.5 291.1	HANGOVER GND CON 124.75 353.75
--------------------------	---	--------------------------------	--------------------------------	------------------------------------	---	---

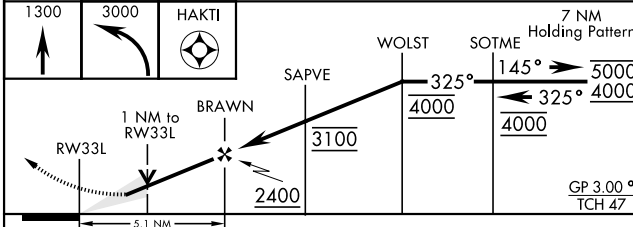


SBAS VNAV NA.
For uncompensated Baro-VNAV systems, LNAV/VNAV NA below -16°C or above 54°C.
Simultaneous approach authorized with Rwy 33L and 33R.
Vertical guidance required for simultaneous operations.
LNAV procedures NA during simultaneous operations.

SC-3, 16 APR 2026 to 14 MAY 2026

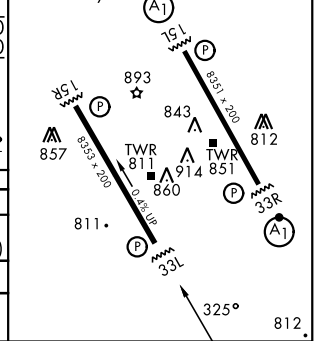
SC-3, 16 APR 2026 to 14 MAY 2026

EMERG SAFE ALT 100 NM 4100



ELEV 761	TDZE 733
----------	----------

ALS Rwy 15L nstd len 2100'
HIRL all rwys



CATEGORY	A	B	C	D	E
LNAV/VNAV DA	983/40	250	(300-¾)	992/40 259 (300-¾)	1030/45 297 (300-¾)
LNAV MDA	1080/55		347	(400-1)	
CIRCLING*	1240-1 479 (500-1)	1280-1 519 (600-1)	1500-2 739 (800-2)	2000-3	1239 (1300-3)

UNIVERSAL CITY, TEXAS
Amdt 4 20FEB25

29°32'N-98°17'W

RANDOLPH AFB (KRND)

RNAV (GPS) RWY 33L