

# RNAV (GPS) RWY 33R

APCH CRS <b>325°</b>	Rwy Idg TDZE Arprt Elev	<b>8351</b> <b>734</b> <b>761</b>
-------------------------	-------------------------------	---

[USAF]

RANDOLPH AFB (KRND)

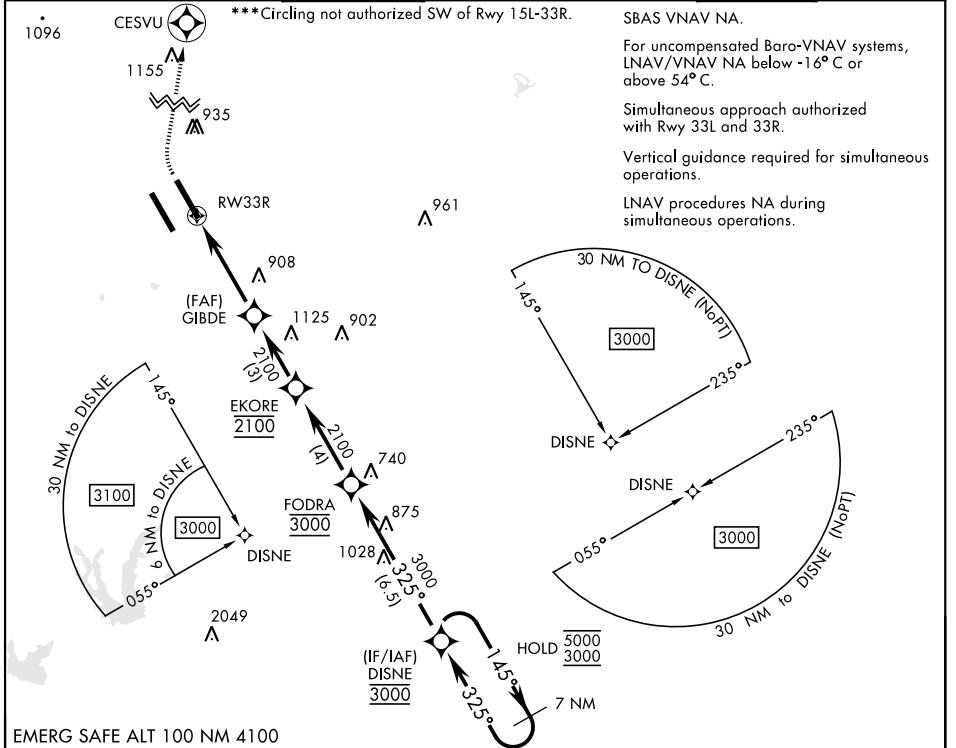
RNP APCH - GPS

\*When ALS inop, increase CAT ABCD RVR to 40, vis to ¾ mile;  
CAT E RVR to 45, vis to ⅞ mile.  
\*\* When ALS inop, increase CAT AB RVR to 55 and vis to 1 mile;  
CAT CDE vis to 1 ⅓ miles.

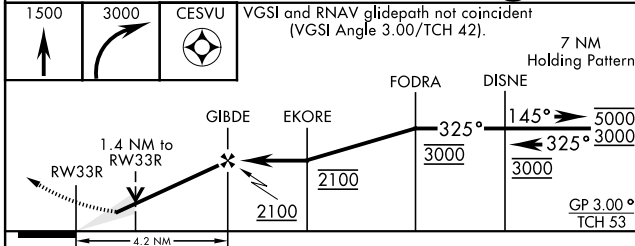


MISSED APPROACH: Climb to 1500 then climbing right turn to 3000 direct CESVU. Expect ATC instructions.

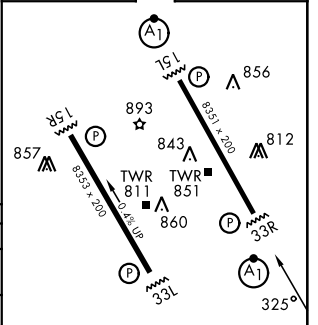
ATIS ★ <b>290.525</b>	SAN ANTONIO APP CON <b>128.05 318.1</b>	TOWER ★ <b>128.25 294.7</b>	GND CON <b>119.65 275.8</b>	HANGOVER ATIS ★ <b>327.8</b>	HANGOVER TOWER ★ <b>120.5 291.1</b>	HANGOVER GND CON <b>124.75 353.75</b>
--------------------------	--	--------------------------------	--------------------------------	---------------------------------	--	--



EMERG SAFE ALT 100 NM 4100



ELEV	761	TDZE	734
------	-----	------	-----



CATEGORY	A	B	C	D	E
LNAV/VNAV DA *	983/24 250 (300-½)			987/24 254 (300-½)	1025/24 292 (300-½)
LNAV MDA **	1200/24 467 (500-½)		1200/50	467	(500-1)
CIRCLING ***	1240-1 479 (500-1)		1260-1½ 499 (500-1½)	1900-3	1139 (1200-3)

HIRL all rwys  
ALS Rwy 15L nstd len 2100'

# RNAV (GPS) RWY 33R

SC-3, 16 APR 2026 to 14 MAY 2026

SC-3, 16 APR 2026 to 14 MAY 2026