

TACAN RWY 15R

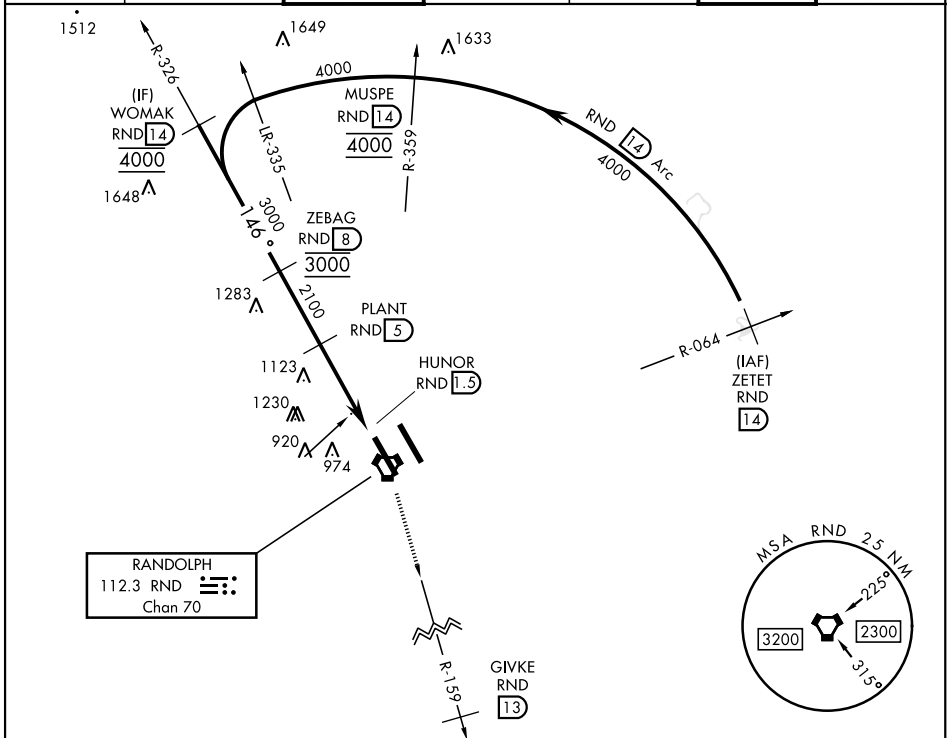
VORTAC RND 112.3 Chan 70	APCH CRS 146°	Rwy Idg TDZE Arpt Elev 8353 761 761	[USAF]	RANDOLPH AFB (KRND)
--	-------------------------	---	--------	---------------------

RADAR required

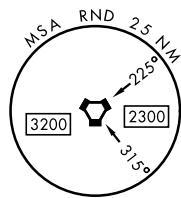
* Circling not authorized NE of Rwy 15R-33L.

MISSED APPROACH: Climb to 3000 out RND VORTAC R-159 to 13 DME (GIVKE). Expect ATC instructions.

ATIS ★ 290.525	SAN ANTONIO APP CON 128.05 318.1	TOWER ★ 128.25 294.7	GND CON 119.65 275.8	HANGOVER ATIS ★ 327.8	HANGOVER TOWER ★ 120.5 291.1	HANGOVER GND CON 124.75 353.75
--------------------------	---	--------------------------------	--------------------------------	------------------------------------	---	---

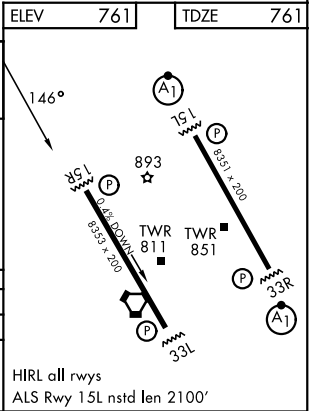
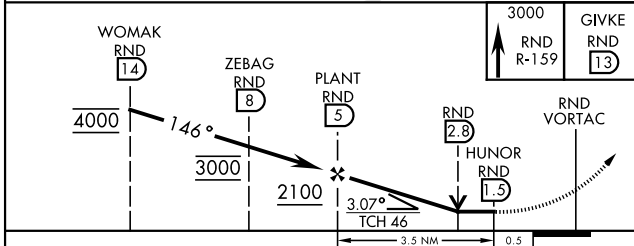


RANDOLPH
112.3 RND
Chan 70



EMERG SAFE ALT 100 NM 4100

ELEV	761	TDZE	761
------	-----	------	-----



CATEGORY	A	B	C	D	E
S-15R	1380/55	619 (700-1)	1380-1 $\frac{3}{4}$	619	(700-1 $\frac{3}{4}$)
CIRCLING*	1380-1	619 (700-1)	1500-2 739 (800-2)	2000-3	1239 (1300-3)

HIRL all rwys
ALS Rwy 15L nstd len 2100'

TACAN RWY 15R

SC-3, 16 APR 2026 to 14 MAY 2026

SC-3, 16 APR 2026 to 14 MAY 2026