

RAPID CITY, SOUTH DAKOTA

HI-TACAN Z RWY 31

TACAN RCA Chan 25	APCH CRS 302°	Rwy Idg 13,497 TDZE 3192 Arprt Elev 3276
-----------------------------	-------------------------	---

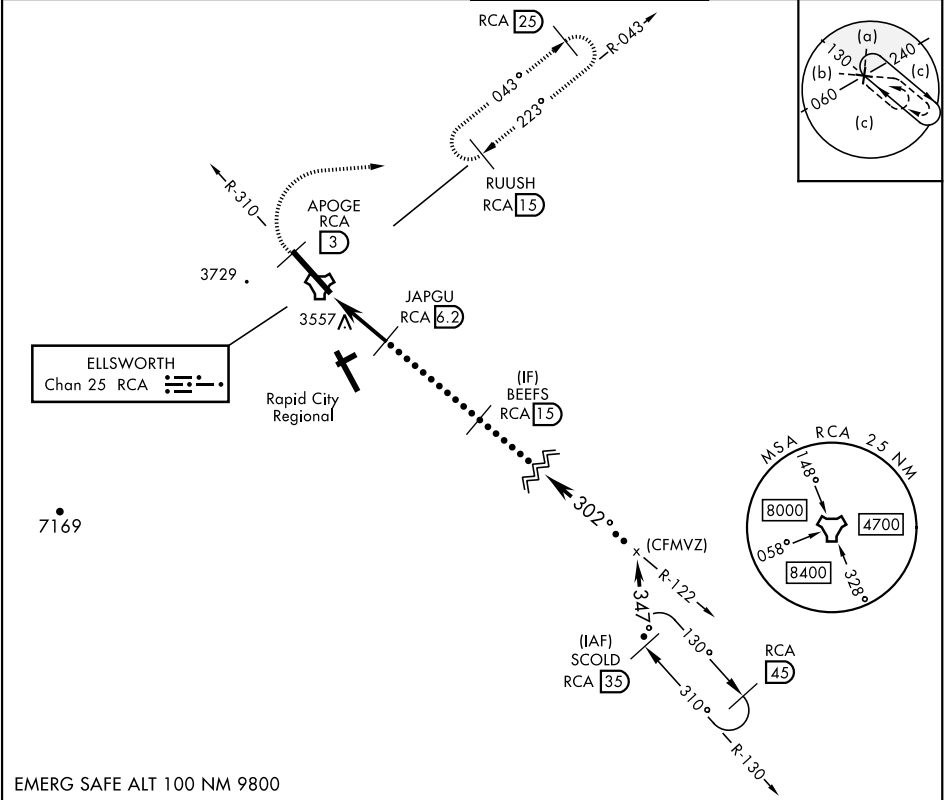
[USAF]

ELLSWORTH AFB (KRCA)

▼ * When ALS inop, increase CAT CDE vis to 1 3/4 mile.
 ** CAT E circling restricted to 28th BW aircraft only; 28th BW aircraft will remain within Class D airspace.

ALSF-1  MISSED APPROACH: Track outbound RCA R-310 to 3 DME (APOGE), then turn right to join RCA R-043 to 15 DME (RUUSH) and hold. Maintain 6000.

ATIS ★ 120.625 269.9	APP CON 119.5 259.1	TOWER ★ 126.05 253.5	GND CON 121.8 275.8
--------------------------------	-------------------------------	--------------------------------	-------------------------------



EMERG SAFE ALT 100 NM 9800

APOGE RCA R-310 (3)	6000	RUUSH RCA (15)	SCOLD RCA (35)	ELEV 3276	TDZE 3192
RCA TACAN	RCA (2.6)	JAPGU RCA (6.2)	Intcp R-122 (CFMVZ)	FL180	
IYODO RCA (1.3)	3006	BEEFS RCA (15)	302°	6000	
0.5			4.9 NM		
CATEGORY	C		D		E
S-31*	3820-1 1/8		628		(600-1 1/8)
CIRCLING**	3880-1 1/8 604 (700-1 1/8)		3980-2 1/4 704 (800-2 1/4)		4040-2 3/4 764 (800-2 3/4)
RAPID CITY, SOUTH DAKOTA				ELLSWORTH AFB (KRCA)	

RAPID CITY, SOUTH DAKOTA 44°09'N-103°06'W ELLSWORTH AFB (KRCA)

HI-TACAN Z RWY 31

NC-1, 16 APR 2026 to 14 MAY 2026

NC-1, 16 APR 2026 to 14 MAY 2026