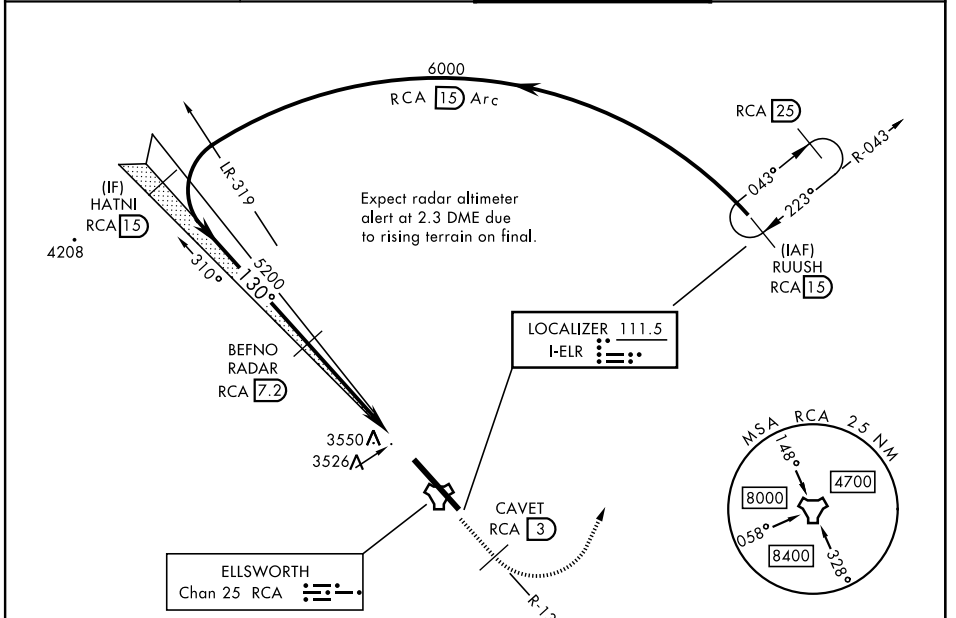


ILS or LOC Y RWY 13

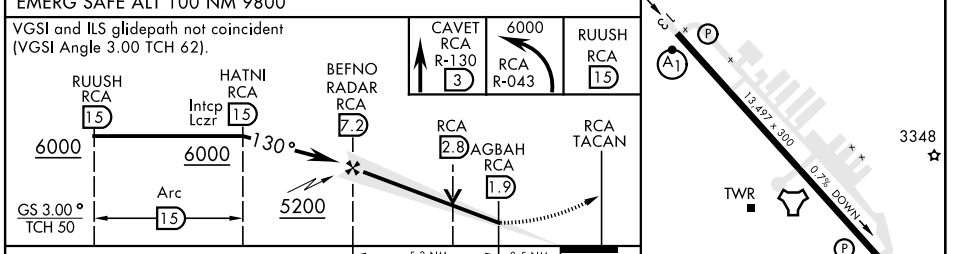
LOC I-ELR 111.5	APCH CRS 130°	Rwy Idg 13,497 TDZE 3276 Arpt Elev 3276	[USA#]	ELLSWORTH AFB (KRCA)
---------------------------	-------------------------	--	--------	----------------------

RADAR or DME required.		ALSIF-1 	MISSED APPROACH: Track outbound RCA R-130 to 3 DME (CAVET), then turn left to join RCA R-043 to 15 DME (RUUSH) and hold. Maintain 6000.
<p>▼ *When ALS inop, increase RVR to 40 and vis to 3/4 mile. ** When ALS inop, increase CAT AB RVR to 55 and vis to 1 mile, CAT CDE vis to 1 1/2 miles. *** CAT E circling restricted to 28th BW aircraft only; 28th BW aircraft will remain within Class D airspace.</p>			

ATIS ★ 120.625 269.9	APP CON 119.5 259.1	TOWER ★ 126.05 253.5	GND CON 121.8 275.8
--------------------------------	-------------------------------	--------------------------------	-------------------------------



ELEV 3276	TDZE 3276
5243	Rapid City Regional



CATEGORY	A	B	C	D	E
S-ILS 13 *	3476/24		200	(200-1/2)	
S-LOC 13 **	3780/24 504 (600-1/2)		3780/55 504 (600-1)		
CIRCLING ***	3860-1 584 (600-1)	3880-1 604 (700-1)	3880-1 3/4 604 (700-1 3/4)	3980-2 1/4 704 (800-2 1/4)	4040-2 3/4 764 (800-2 3/4)

RAPID CITY, SOUTH DAKOTA	44°09'N-103°06'W	ELLSWORTH AFB (KRCA)
--------------------------	------------------	----------------------

ILS or LOC Y RWY 13

NC-1, 16 APR 2026 to 14 MAY 2026

NC-1, 16 APR 2026 to 14 MAY 2026

HIRL Rwy 13-31					
FAF to MAP 5.3 NM					
Knots	60	90	120	150	180
Min:Sec	5:18	3:32	2:39	2:07	1:46